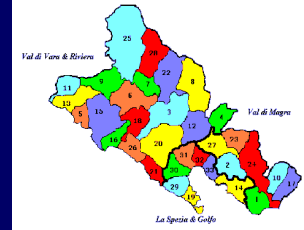


*Salute & Ambiente nel Territorio Spezzino
Presentazione di Dati Ambientali e Sanitari*



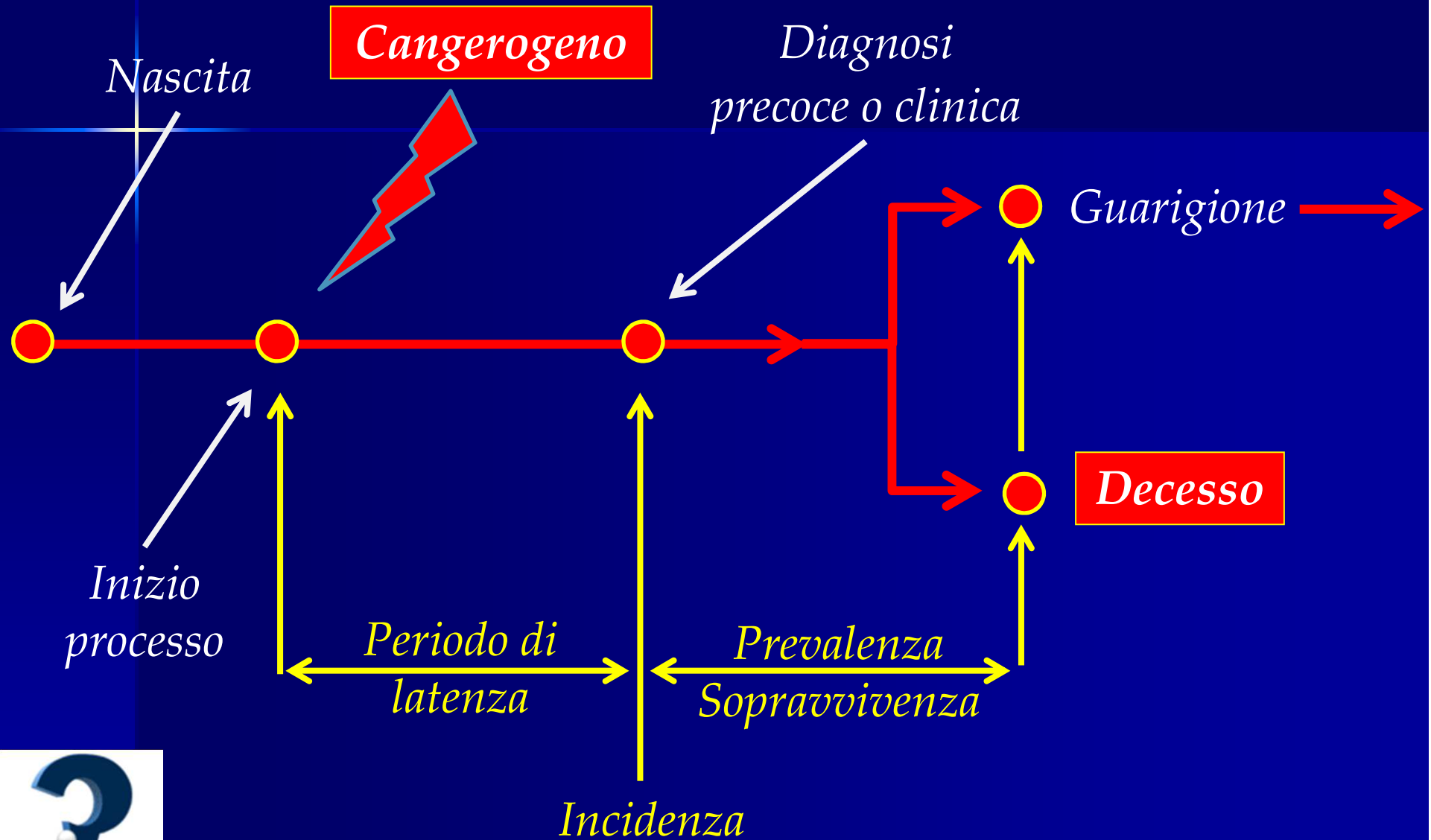
*La Mortalità Oncologica
nell' ASL 5 "Spezzino"
dal 1988 al 2006*

Vincenzo Fontana & Riccardo Pezzi

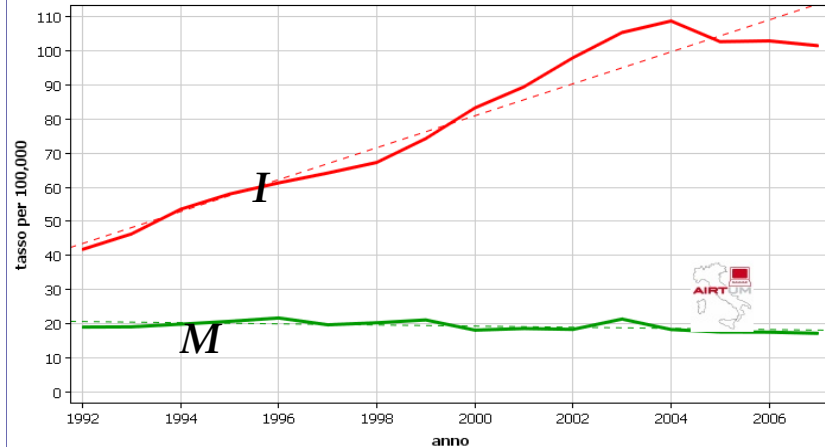
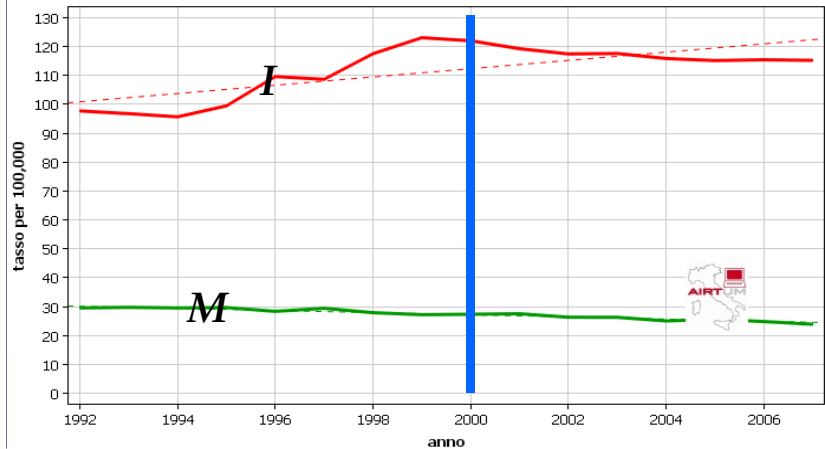
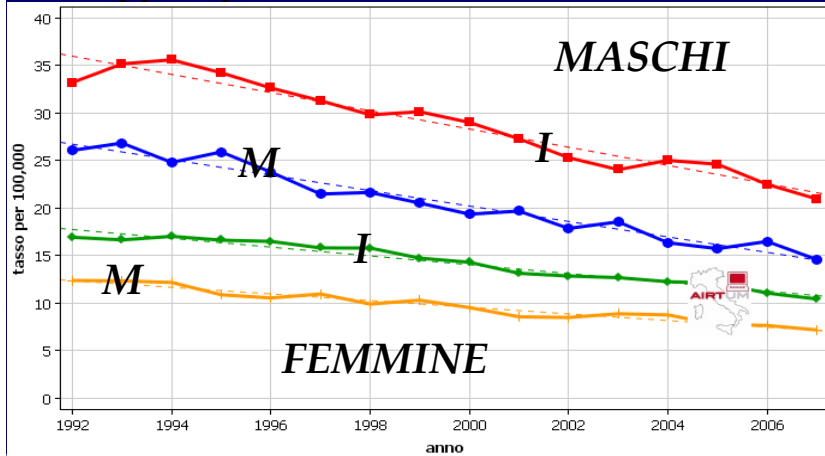
*UOC Epidemiologia, Biostatistica & Clinical Trials
IRCCS AOU San Martino - IST Genova*



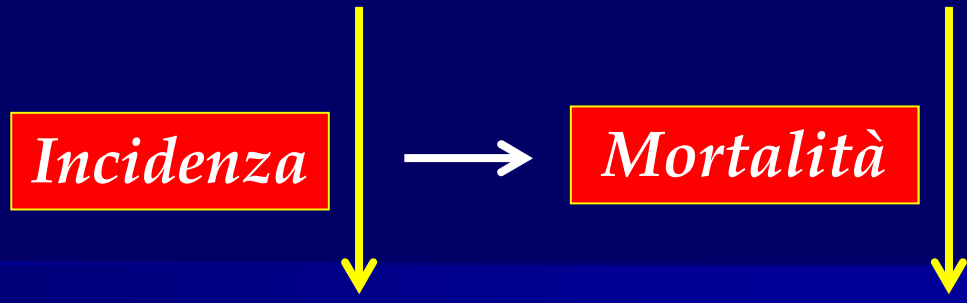
Mortalità Oncologica



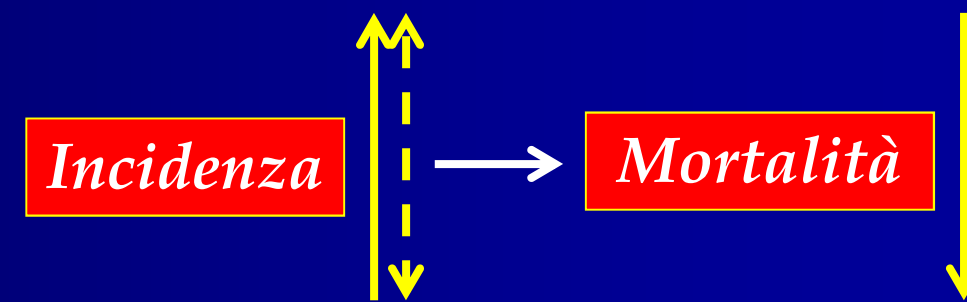
Mortalità Oncologica



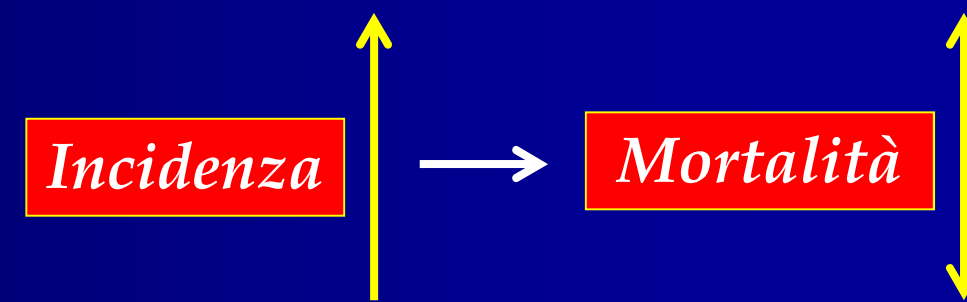
Tumore dello Stomaco



Tumore della Mammella



Tumore della Prostata



Epidemiologia Descrittiva

Spazio & Tempo

1990

2000

2010



Indici di Rischio

Indici di Rischio Assoluto o Frequenza Relativa

Tasso (T) = decessi / popolazione per 100.000

T = 1.9 = circa 2 decessi ogni 100.000 abitanti

Tasso Standardizzato per Età e Sesso (TS)

Indici di Rischio Relativo o di Confronto

Differenze Geografiche

Rapporto Standardizzato di Mortalità

SMR

SMR < 1 → a più basso rischio

SMR = 1 → stesso rischio

SMR > 1 → a più alto rischio

Indici di Rischio Relativo o di Confronto

Differenze Temporali

Differenza Media (DM) di periodo

$$DM = TS_{2006} - TS_{1988}$$

Differenza Media Percentuale (DMP) annuale

$$DMP = 100 \cdot \frac{(TS_{2006} - TS_{1988}) / TS_{1988}}{2006 - 1988}$$

DM & DMP

TS

16

14

12

10

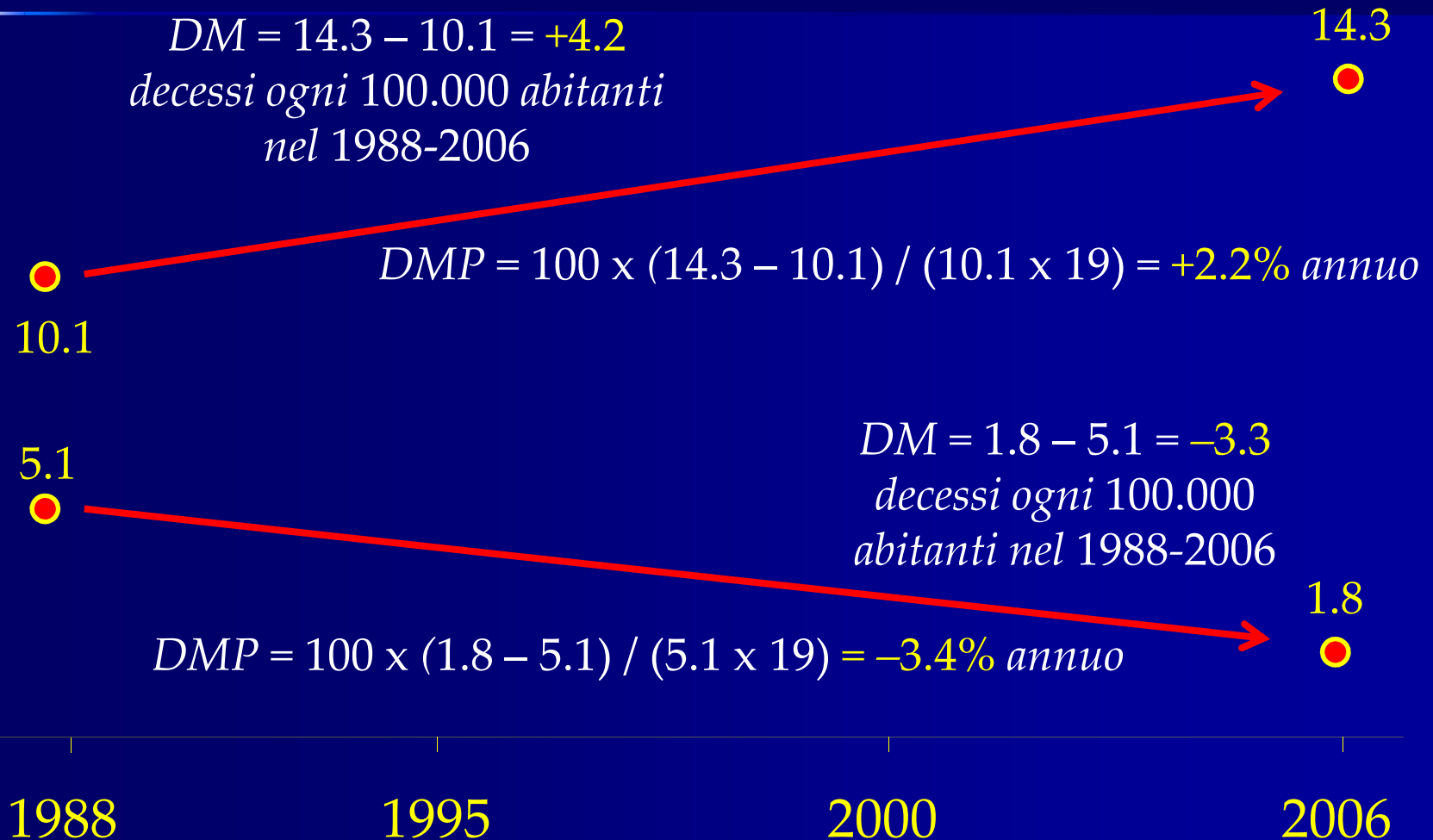
8

6

4

2

0



Alcuni Risultati

Big Killer nell'ASL 5

<i>Rango</i>	<i>Maschi</i>	<i>N</i>	<i>%</i>	<i>Femmine</i>	<i>N</i>	<i>%</i>
1	<i>Polmone</i>	2545	28.0	<i>Mammella</i>	1033	16.1
2	<i>Colon-retto</i>	1102	12.1	<i>Colon-retto</i>	981	15.3
3	<i>Fegato</i>	667	7.3	<i>Stomaco</i>	507	7.9
4	<i>Prostata</i>	652	7.2	<i>Polmone</i>	491	7.7
5	<i>Stomaco</i>	637	7.0	<i>Pancreas</i>	387	6.0
-	<i>Tutti</i>	9088	100.0	<i>Tutti</i>	6411	100.0

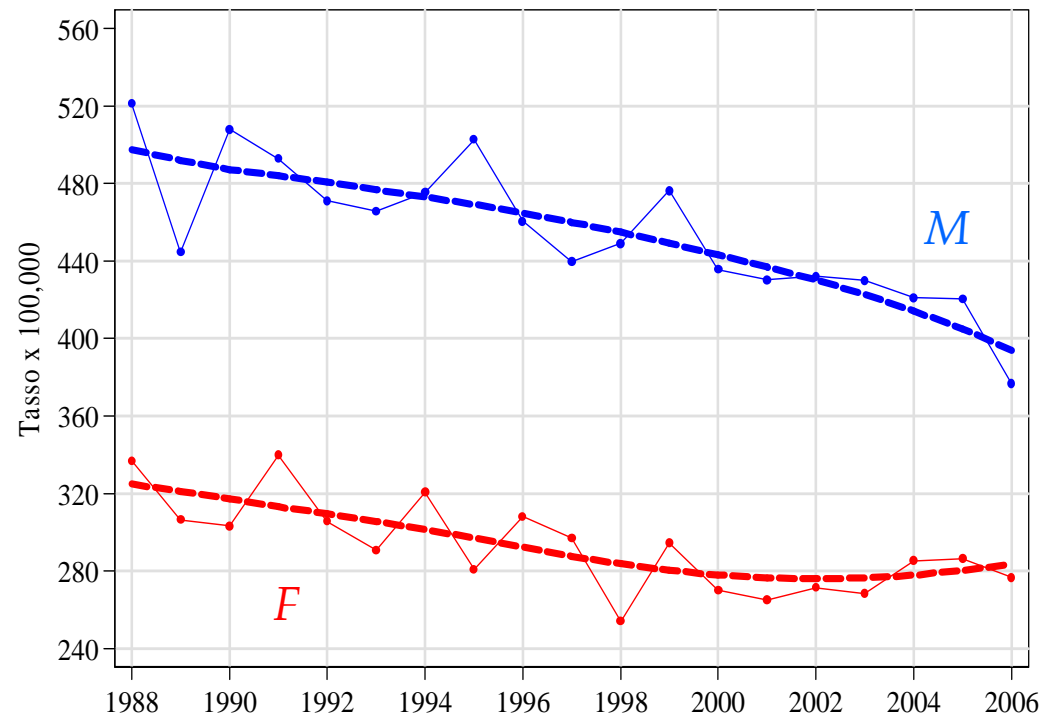
62%

53%

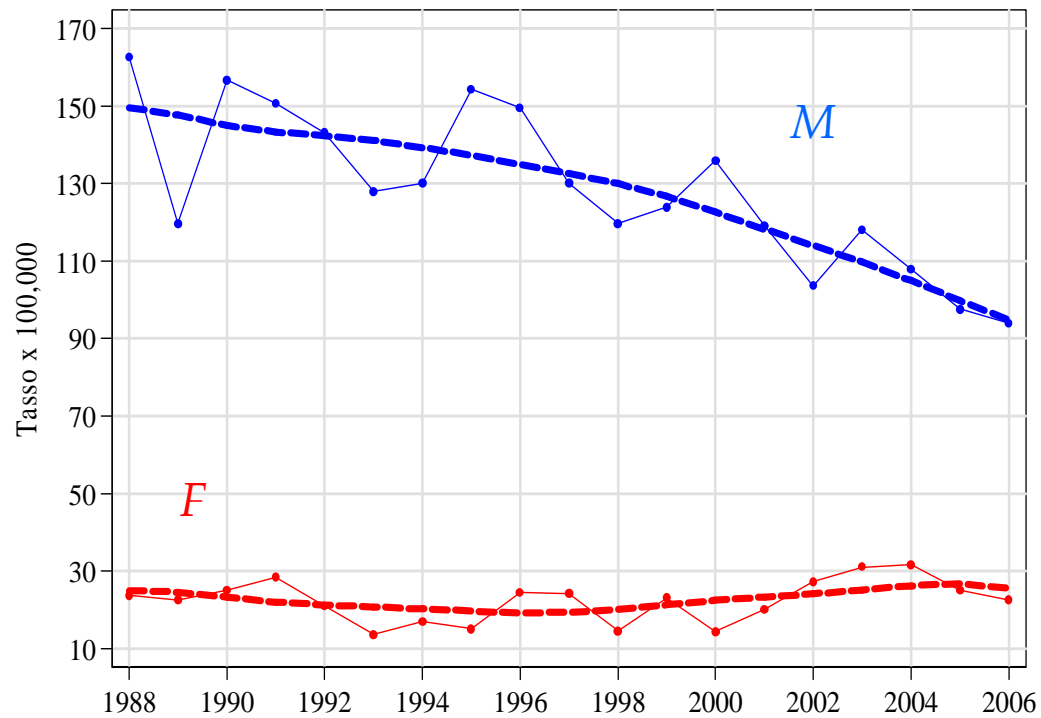
Tutti i Tumori

1988-2006 1985-2002

Sex	Indice	Liguria	Italia
Maschi	SMR	0.99	1.05
	IC 95%	0.97 / 1.01	1.03 / 1.07
	DMP	-1.2%	
	IC 95%	-1.5% / -0.8%	
	DM	-94.7	
Femmine	SMR	0.93	0.99
	IC 95%	0.91 / 0.95	0.97 / 1.01
	DMP	-1.0%	
	IC 95%	-1.5% / -0.5%	
	DM	-53.8	



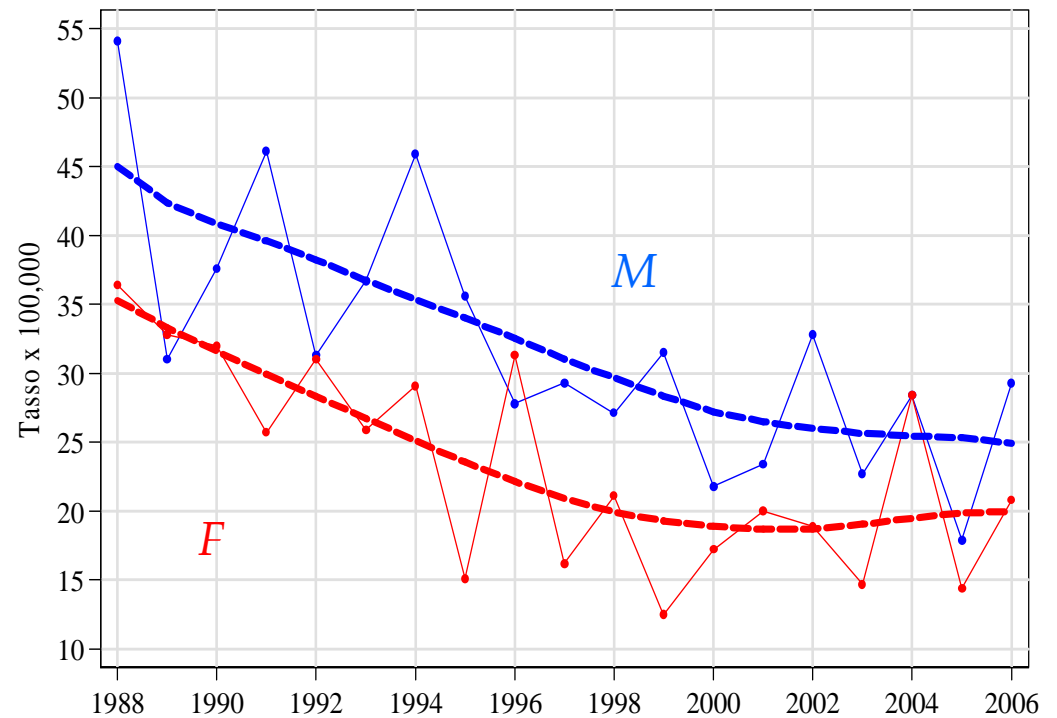
Tumore del Polmone



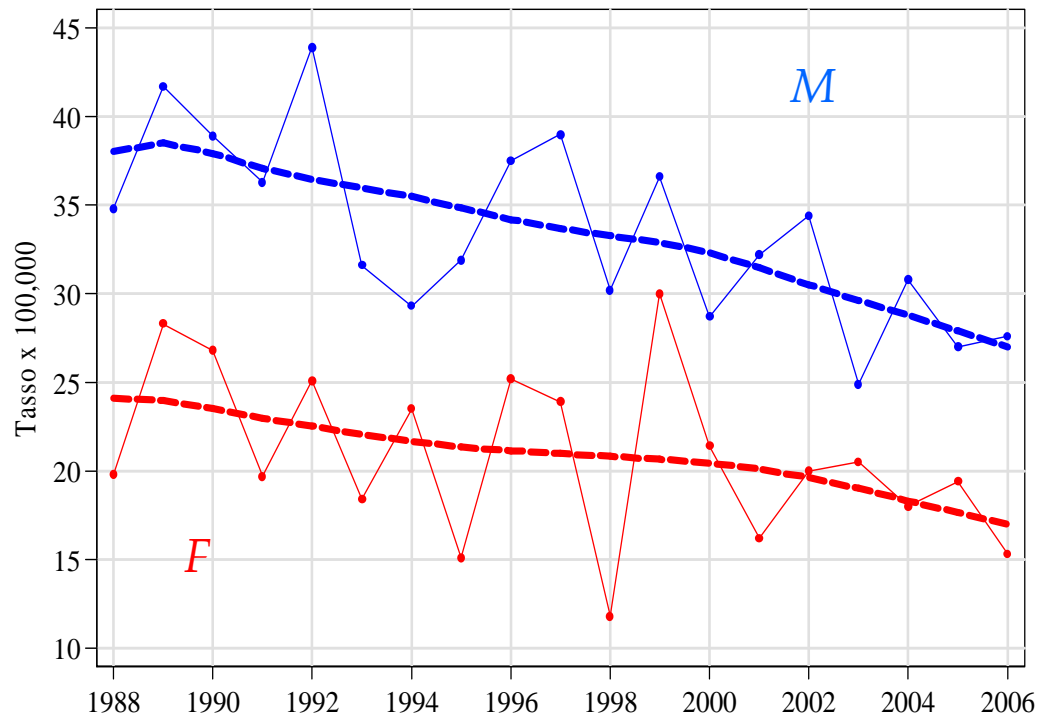
Sex	Indice	Liguria	Italia
Maschi	SMR	1.01	1.02
	IC 95%	0.97 / 1.05	0.98 / 1.06
	DMP	-2.2%	
	IC 95%	-3.0% / -1.5%	
Femmine	DM	-51.7	
	SMR	0.84	0.96
	IC 95%	0.77 / 0.92	0.87 / 1.04
	DMP	+1.1%	
Femmine	IC 95%	-0.7% / +2.9%	
	DM	+4.0	

Tumore dello Stomaco

Sex	Indice	Liguria	Italia
Maschi	SMR	1.14	0.83
	IC 95%	1.06 / 1.23	0.76 / 0.89
	DMP	-3.5%	
	IC 95%	-5.0% / -2.0%	
	DM	-20.8	
Femmine	SMR	1.17	0.84
	IC 95%	1.07 / 1.27	0.77 / 0.91
	DMP	-3.7%	
	IC 95%	-5.3% / -2.0%	
	DM	-16.3	



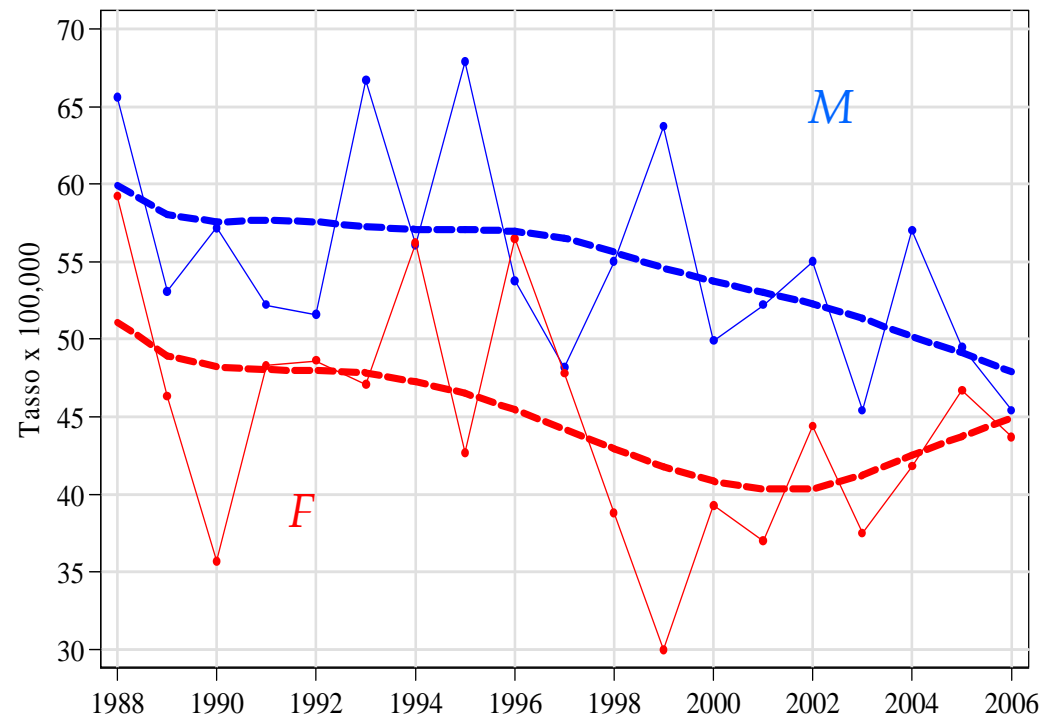
Tumore del Fegato



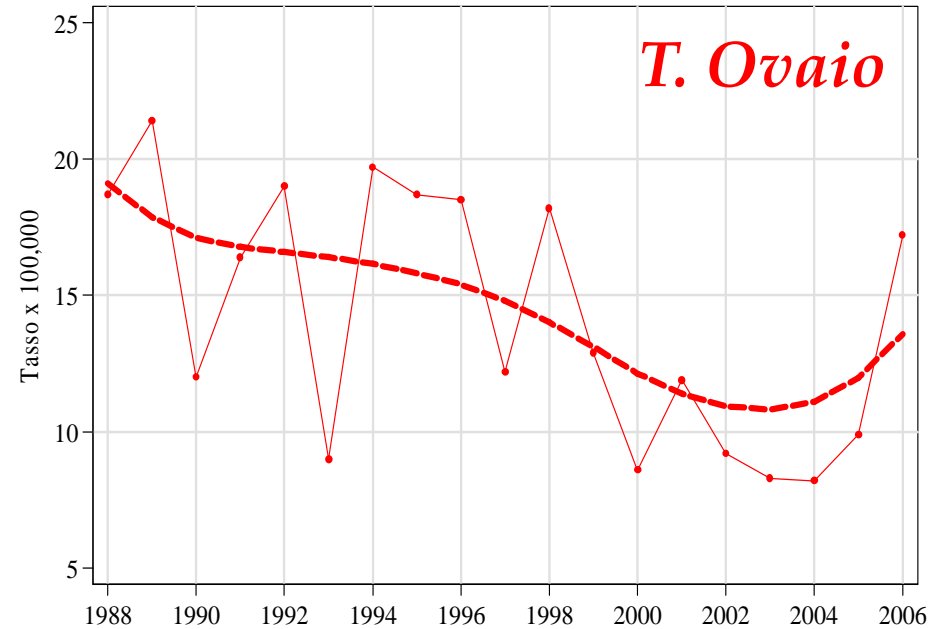
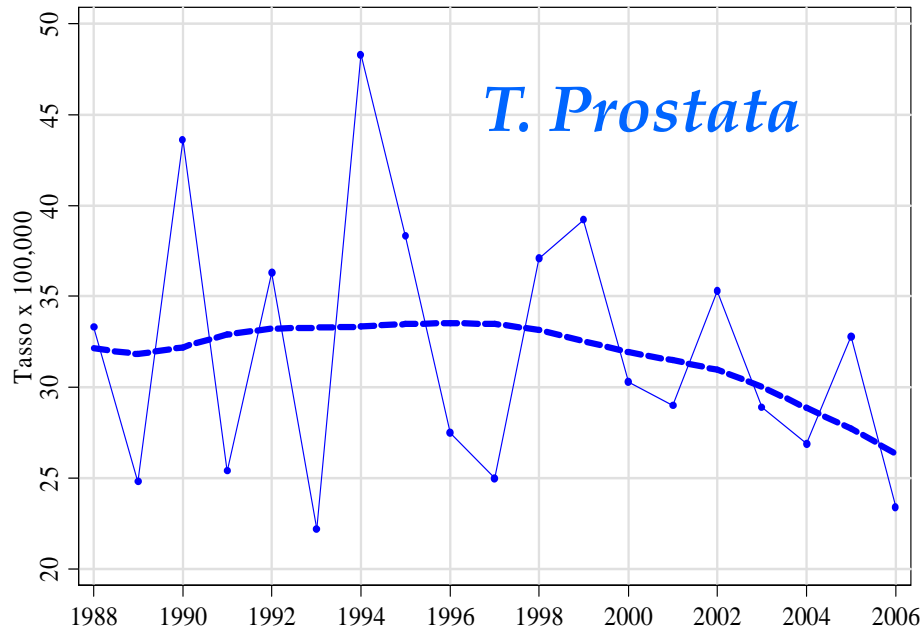
Sex	Indice	Liguria	Italia
Maschi	SMR	1.14	0.94
	IC 95%	1.05 / 1.23	0.87 / 1.01
	DMP		-1.9%
	IC 95%		-3.3% / -0.4%
	DM		-11.1
Femmine	SMR	0.96	0.80
	IC 95%	0.87 / 1.05	0.73 / 0.87
	DMP		-1.6%
	IC 95%		-3.4% / +0.1%
	DM		-6.1

Tumore del Colon-retto

Sex	Indice	Liguria	Italia
Maschi	SMR	0.96	1.12
	IC 95%	0.90 / 1.01	1.05 / 1.19
	DMP	-1.1%	
	IC 95%	-2.2% / +0.1%	
	DM	-10.1	
Femmine	SMR	0.89	0.98
	IC 95%	0.84 / 0.95	0.92 / 1.04
	DMP	-1.2%	
	IC 95%	-2.4% / -0.1%	
	DM	-9.9	



Tumore della Prostata e dell'Ovaio

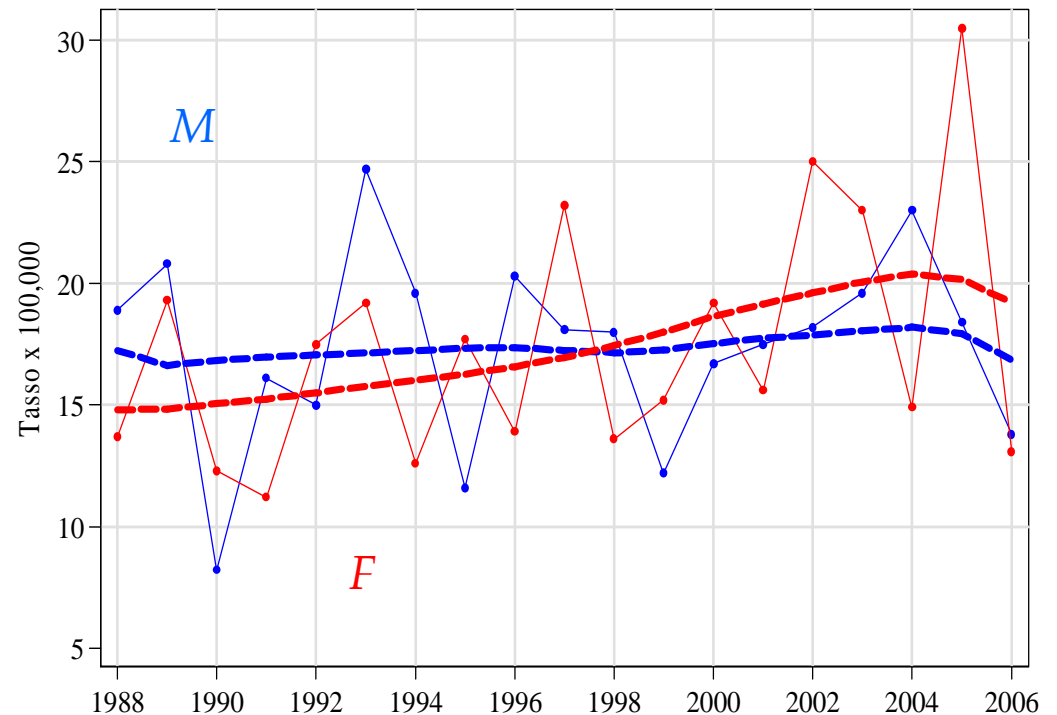


Indice	Liguria	Italia
SMR	0.89	0.90
IC 95%	0.82 / 0.96	0.83 / 0.97
DMP	-0.8%	
IC 95%	-2.3% / +0.7%	
DM	-4.5	

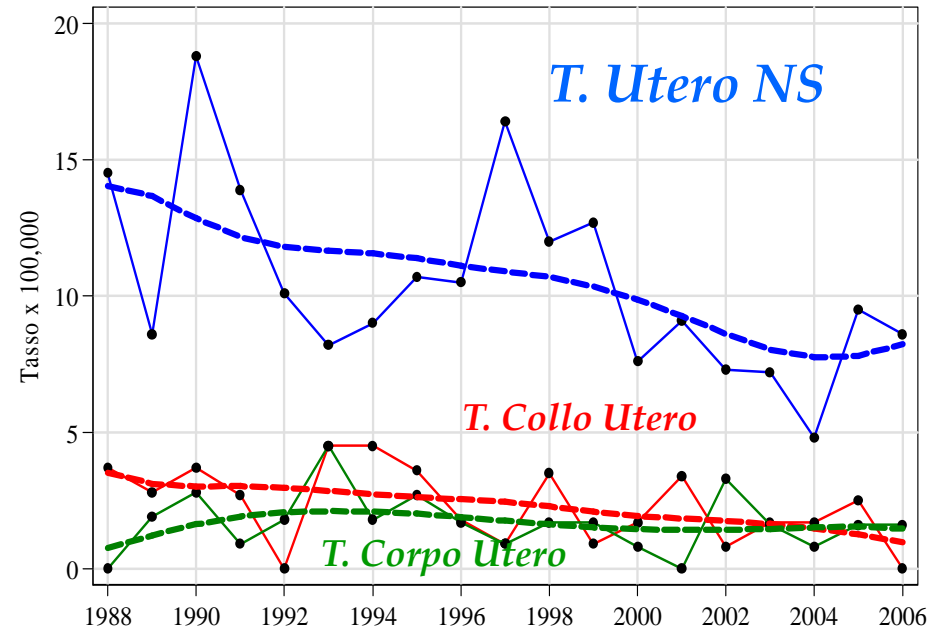
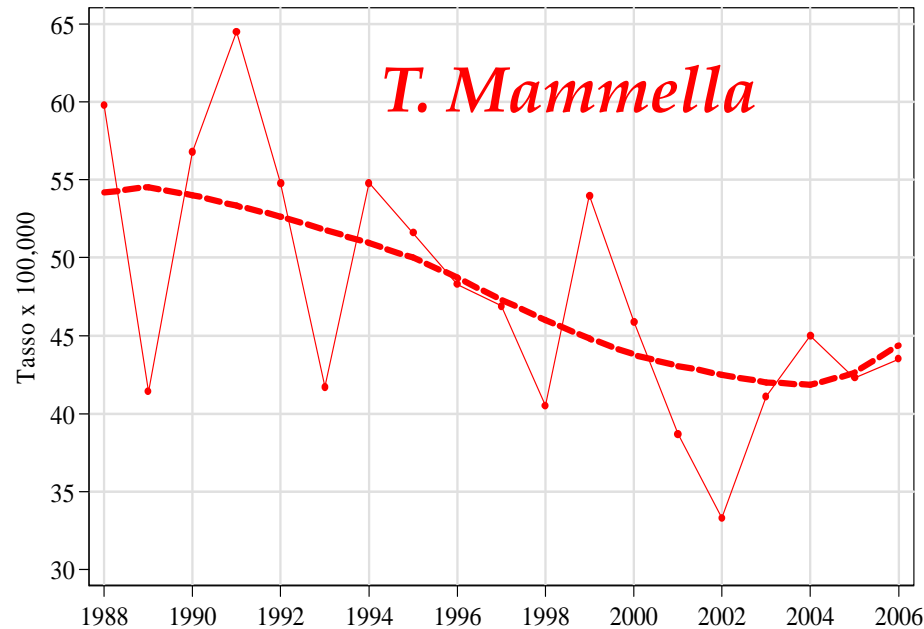
Indice	Liguria	Italia
SMR	1.01	1.14
IC 95%	0.90 / 1.13	1.02 / 1.28
DMP	-3.2%	
IC 95%	-5.5% / -1.1%	
DM	-8.3	

Tumore del Pancreas

Sex	Indice	Liguria	Italia
<i>Maschi</i>	SMR	0.99	0.98
	IC 95%	0.89 / 1.10	0.89 / 1.09
	DMP	+0.4%	
	IC 95%	-1.7% / +2.5%	
	DM	+1.2	
<i>Femmine</i>	SMR	0.97	1.04
	IC 95%	0.88 / 1.07	0.94 / 1.15
	DMP	+2.1%	
	IC 95%	+0.1% / +4.2%	
	DM	+6.6	



Tumore della Mammella e dell'Utero

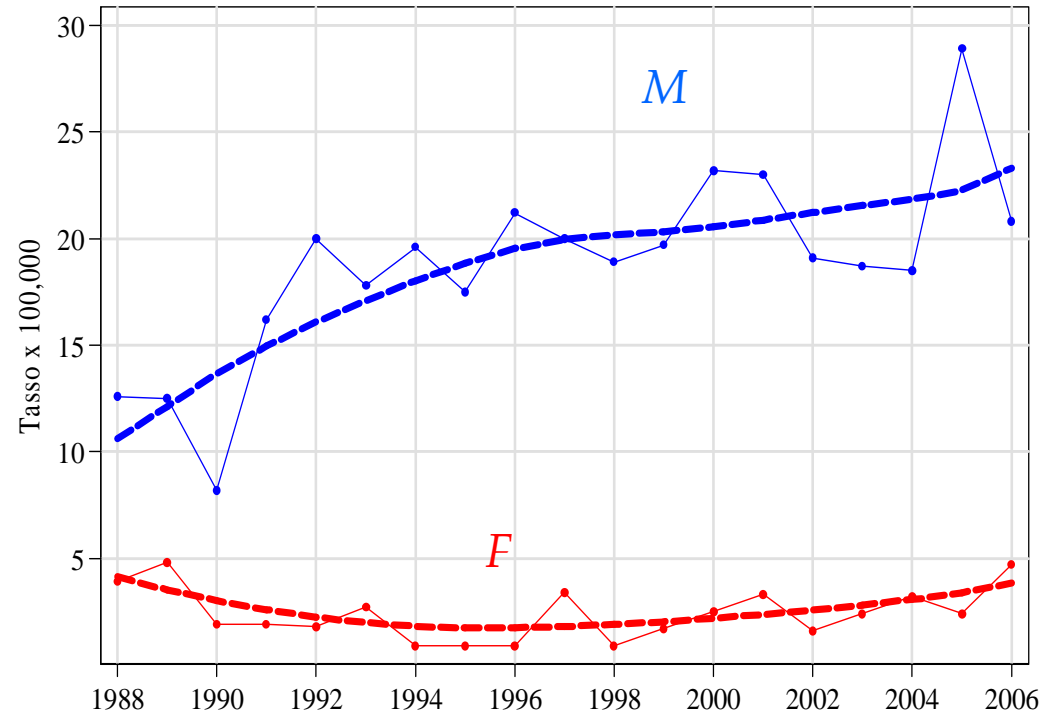


Indice	Liguria	Italia
SMR	0.88	0.95
IC 95%	0.93 / 0.94	0.89 / 1.01
DMP	-1.9%	
IC 95%	-3.0% / -0.7%	
DM	-4.5	

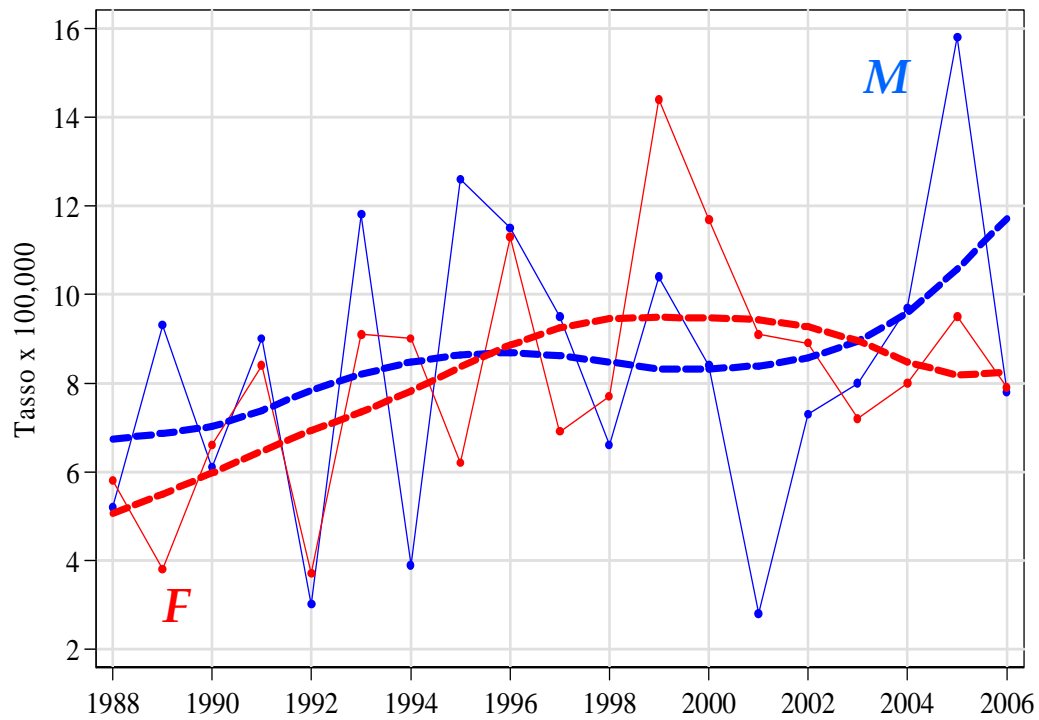
Indice	Liguria	Italia
SMR	1.17	-
IC 95%	1.03 / 1.34	-
DMP	-3.2%	
IC 95%	-5.7% / -0.7%	
DM	-6.2	

Tumore della Pleura

Sex	Indice	Liguria	Italia
Maschi	SMR	1.61	6.14
	IC 95%	1.45 / 1.78	5.53 / 6.79
	DMP	+3.0%	
	IC 95%	+0.9% / +5.1%	
	DM	+10.1	
Femmine	SMR	0.96	1.58
	IC 95%	0.70 / 1.21	1.19 / 2.07
	DMP	+0.9%	
	IC 95%	-4.3% / +6.5%	
	DM	+0.2	



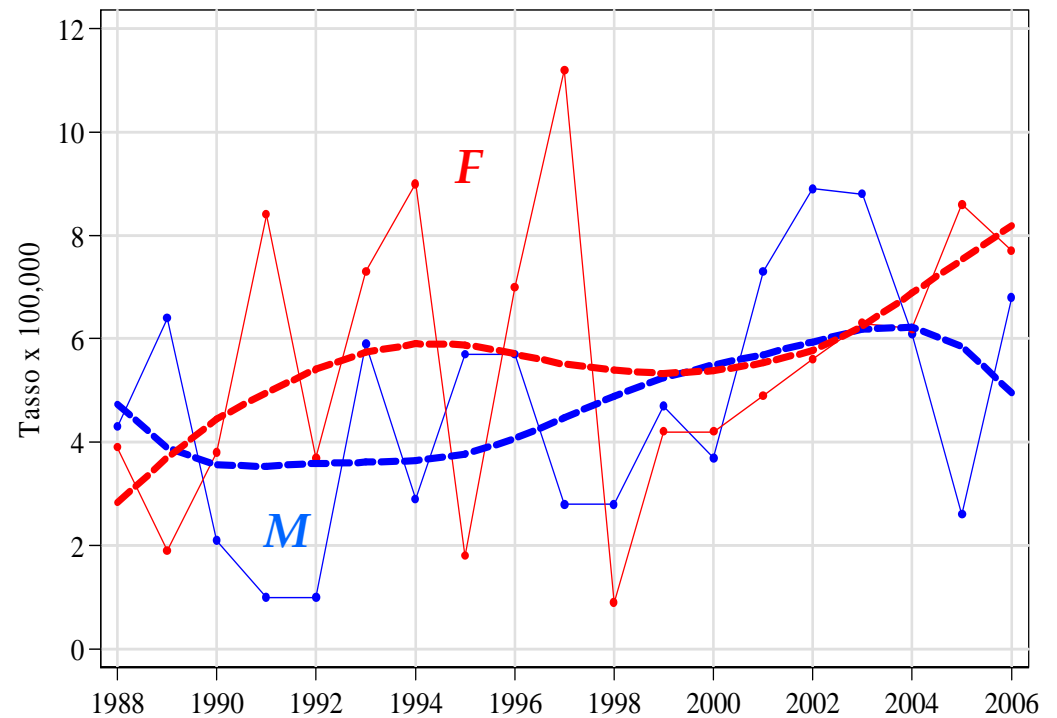
Linfoma NonHodgkin



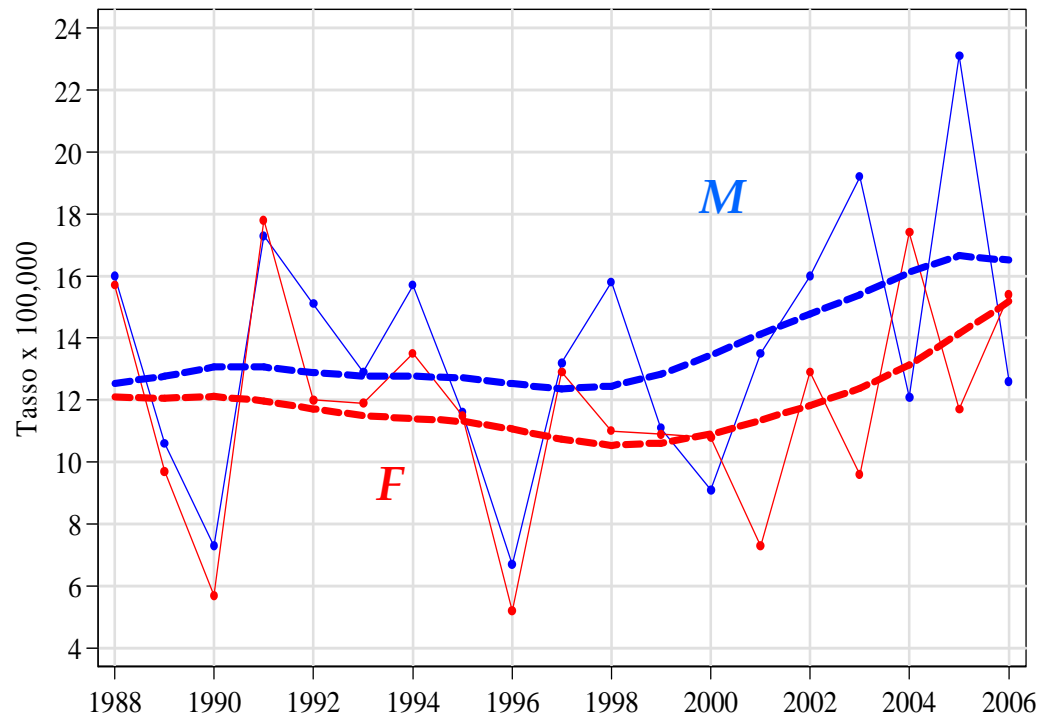
Sex	Indice	Liguria	Italia
Maschi	SMR	0.78	0.86
	IC 95%	0.67 / 0.91	0.73 / 1.00
	DMP	+1.8%	
	IC 95%	-1.2% / +4.9%	
Femmine	SMR	0.87	0.97
	IC 95%	0.75 / 1.01	0.83 / 1.12
	DMP	+2.3%	
	IC 95%	-0.6% / +0.53%	
	DM	+2.7	
	DM	+3.6	

Mieloma Multiplo

Sex	Indice	Liguria	Italia
Maschi	SMR	0.80	0.89
	IC 95%	0.64 / 0.97	0.72 / 1.09
	DMP	+4.2%	
	IC 95%	+0.11% / +0.85%	
	DM	+3.4	
Femmine	SMR	0.99	1.07
	IC 95%	0.83 / 1.18	0.89 / 1.27
	DMP	+2.4%	
	IC 95%	-1.1% / +6.0%	
	DM	+2.4	



Tutte le Leucemie



Sex	Indice	Liguria	Italia
Maschi	SMR	1.07	1.02
	IC 95%	0.95 / 1.21	0.90 / 1.14
	DMP		+1.5%
	IC 95%		-0.8% / +3.9%
	DM		+3.5
Femmine	SMR	1.16	1.12
	IC 95%	1.02-1.31	0.99-1.27
	DMP		+0.6%
	IC 95%		-1.8% / +3.0%
	DM		+0.9

Conclusioni

ASL 5 vs Liguria

Tutti i Tumori

Maschi: -95 decessi / centomila (-1%) SMR = 0.99

Femmine: -54 decessi / centomila (-1%) SMR = 0.93

Differenza 2006-1998: circa 300 decessi in meno

Polmone, Stomaco, Fegato, Colon-retto,
Prostata, Pancreas, Mammella

Maschi: -97 decessi / centomila (-2%) SMR = 1.01

Femmine: -38 decessi / centomila (-1%) SMR = 0.92

Differenza 2006-1998: circa 270 decessi in meno

Conclusioni

ASL 5 vs Liguria

Utero e Ovaio

-17 decessi per centomila (-2%) SMR = 1.05

Differenza 2006-1998: circa 30 decessi in meno

Leucemie e Linfomi

Maschi: +8 decessi per centomila (+2%) SMR = 0.99

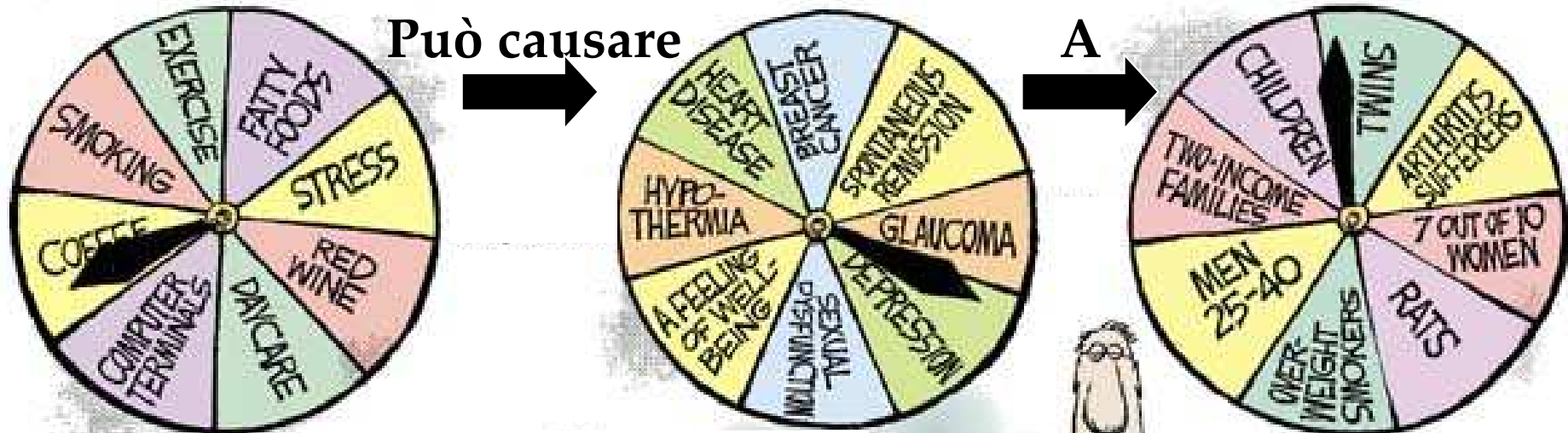
Femmine: +7 decessi per centomila (+2%) SMR = 0.93

Differenza 2006-1998: circa 30 decessi in più

Notiziario medico *casuale* del giorno

Dalla Rivista
Internazionale per
il Panico Sanitario

By Jim Borgman



Secondo il
resoconto
epidemiologico,
oggi ...

Grazie per l'attenzione