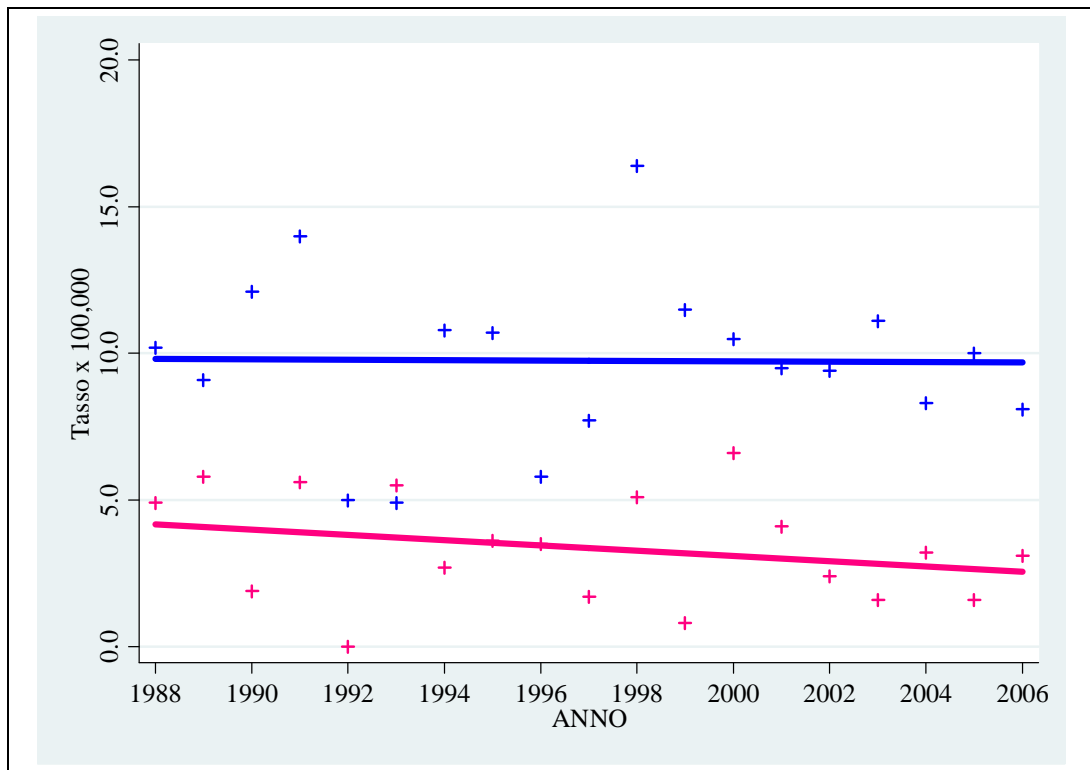
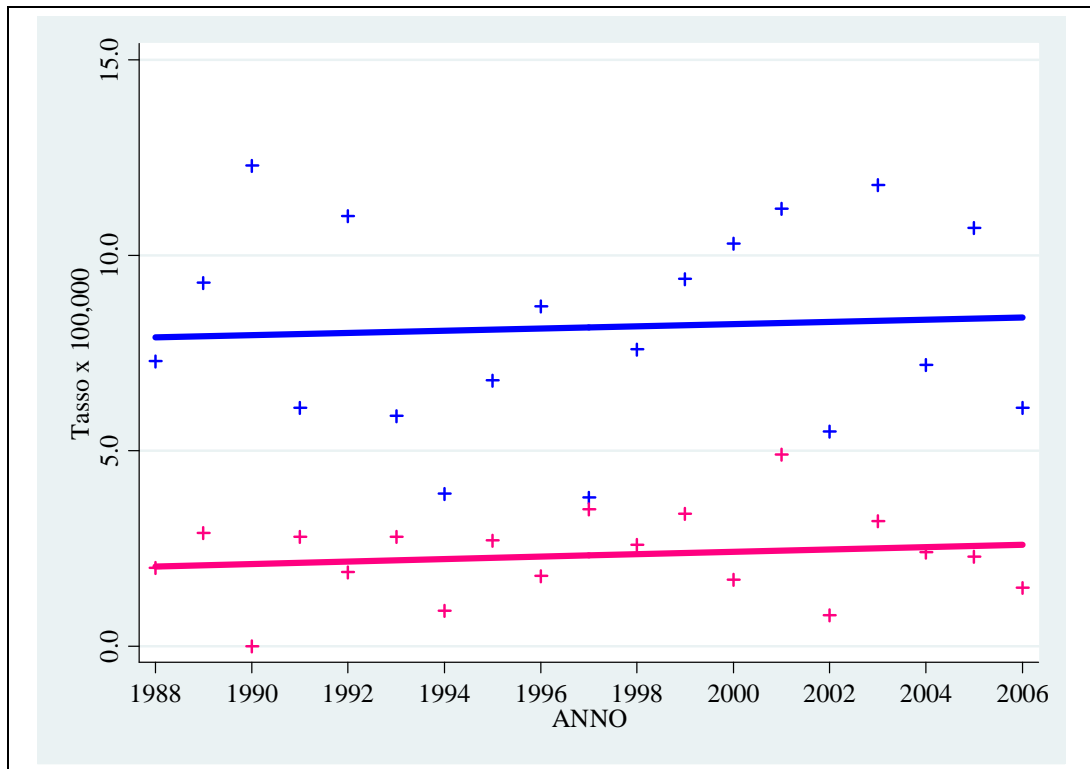


**ALLEGATO 5**

***TENDENZA ANNUALE DEL TASSO  
DI MORTALIA' PER CANCRO  
NELLA ASL 5,1988-2006***



**FIGURA 148 – T. BOCCA, LINGUA & FARINGE (ICD: 140-149)**



**FIGURA 149 – T. ESOFAGO (ICD: 150)**

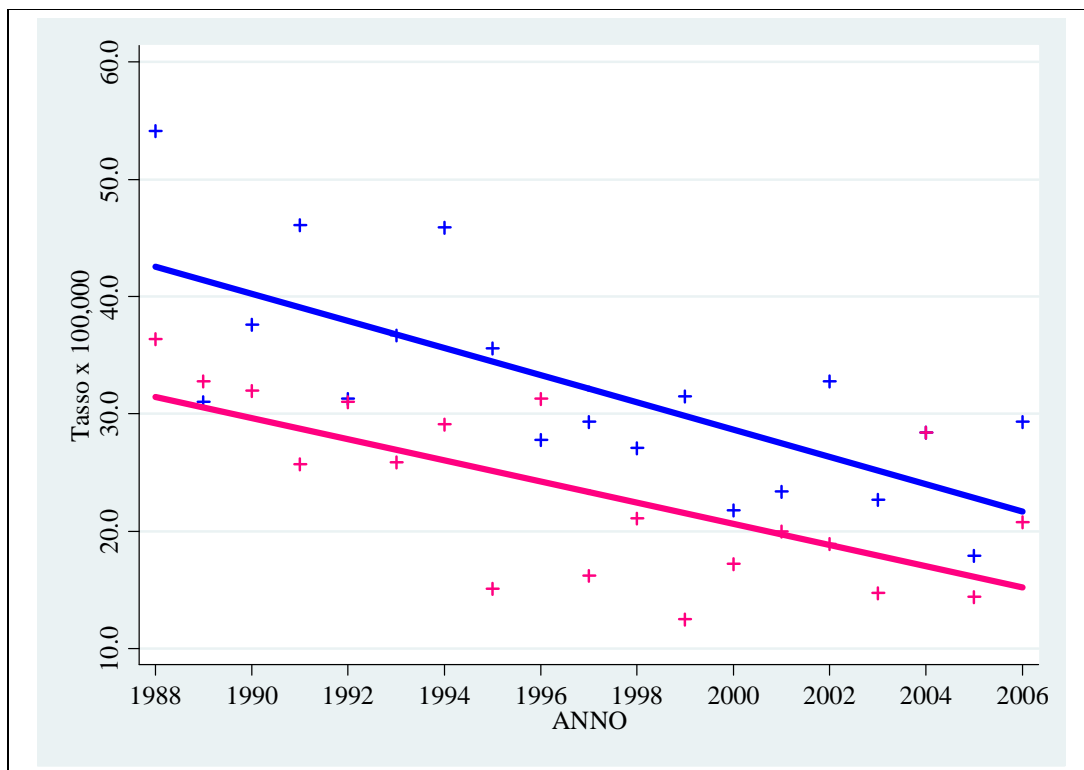


FIGURA 150 – T. STOMACO (ICD: 151)

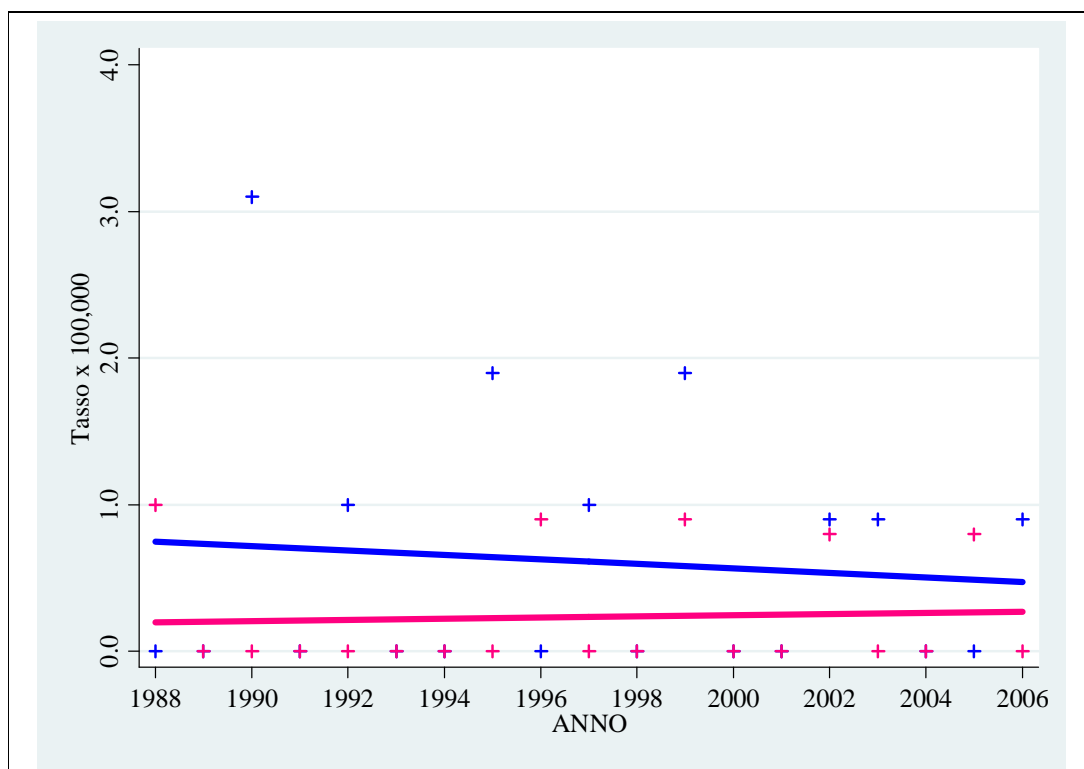
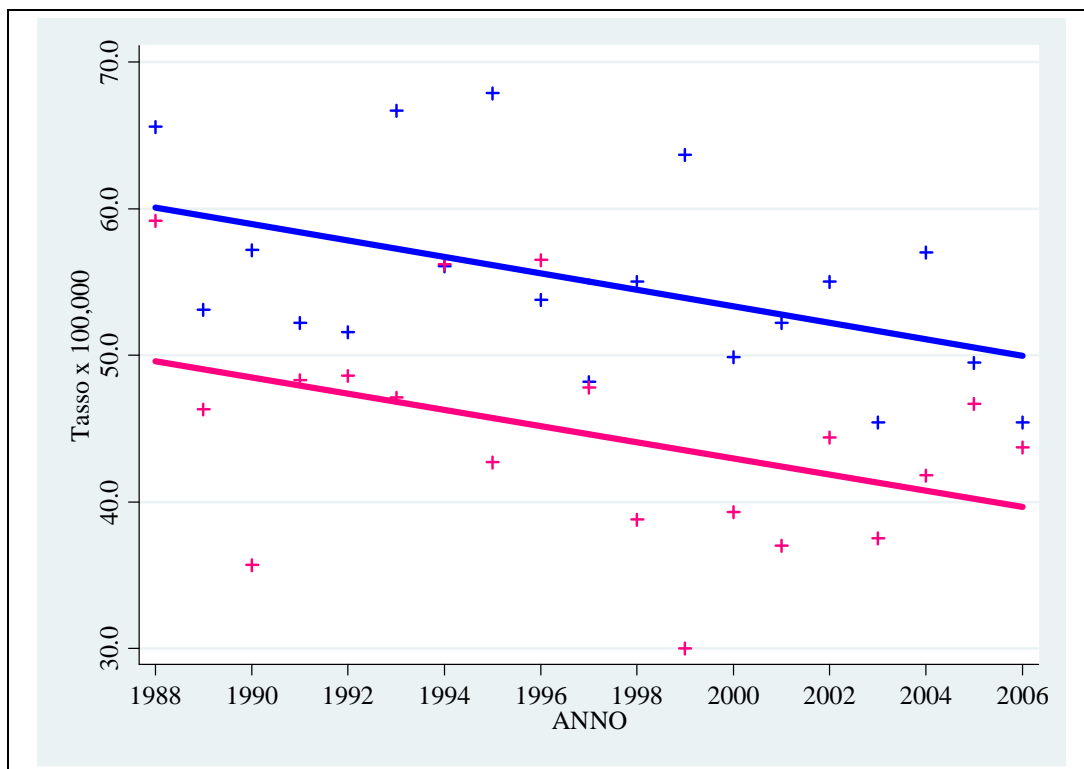
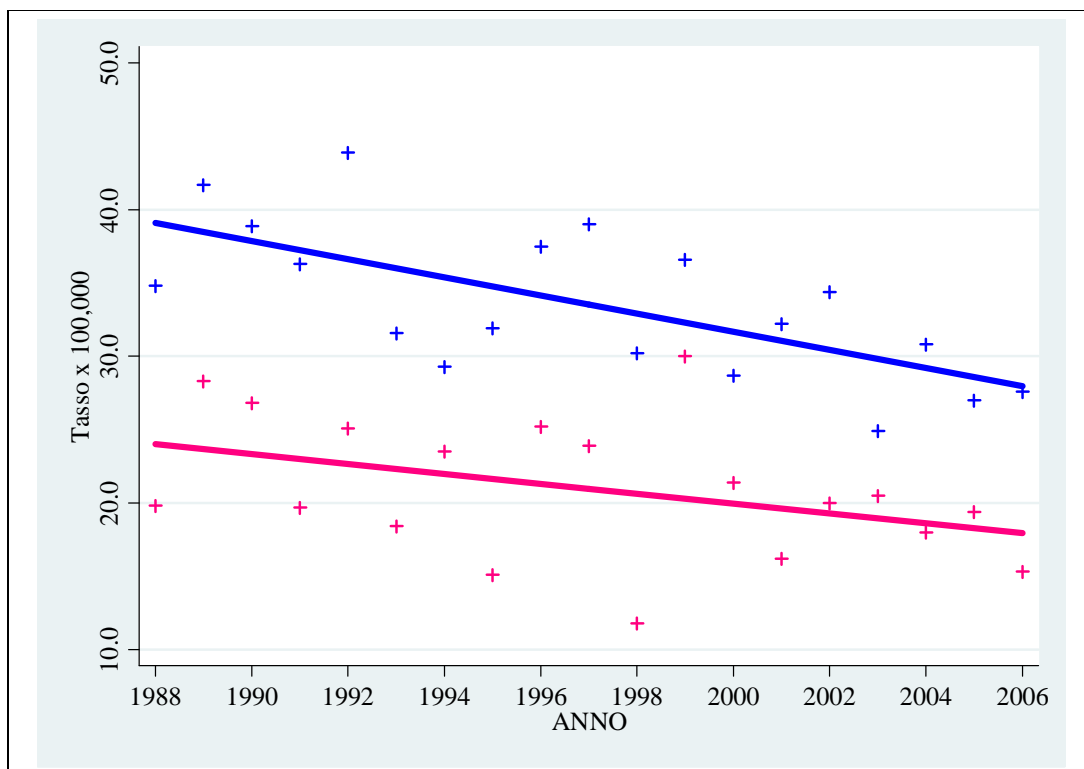


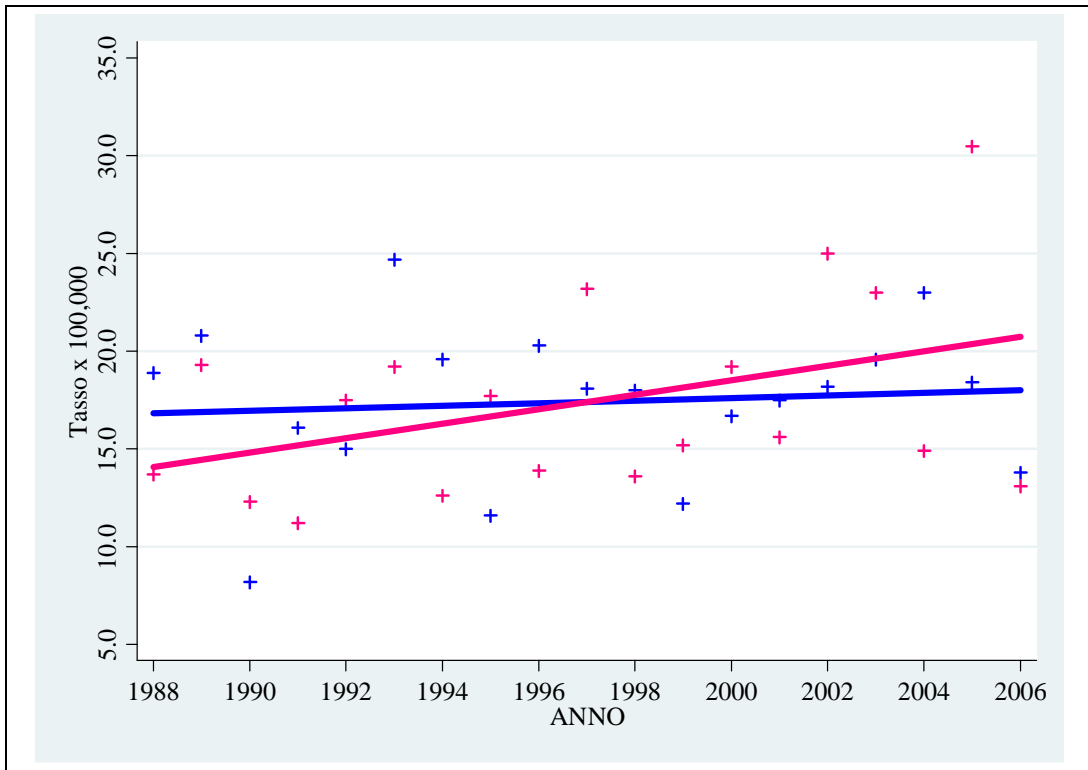
FIGURA 151 – T. INTESTINO TENUE (ICD: 152)



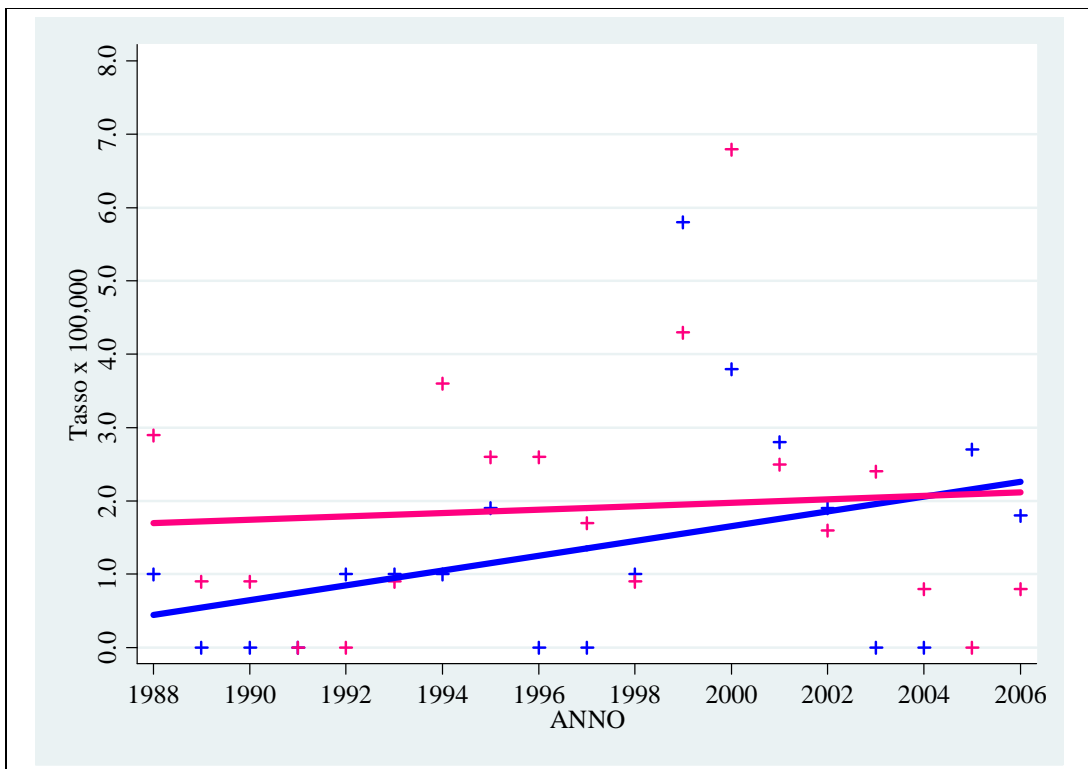
**FIGURA 152 – T. COLON & RETTO (ICD: 153, 154, 159)**



**FIGURA 153 – T. FEGATO (ICD: 155, 156)**



**FIGURA 154 – T. PANCREAS (ICD: 157)**



**FIGURA 155 – T. PERITONEO (ICD: 158)**

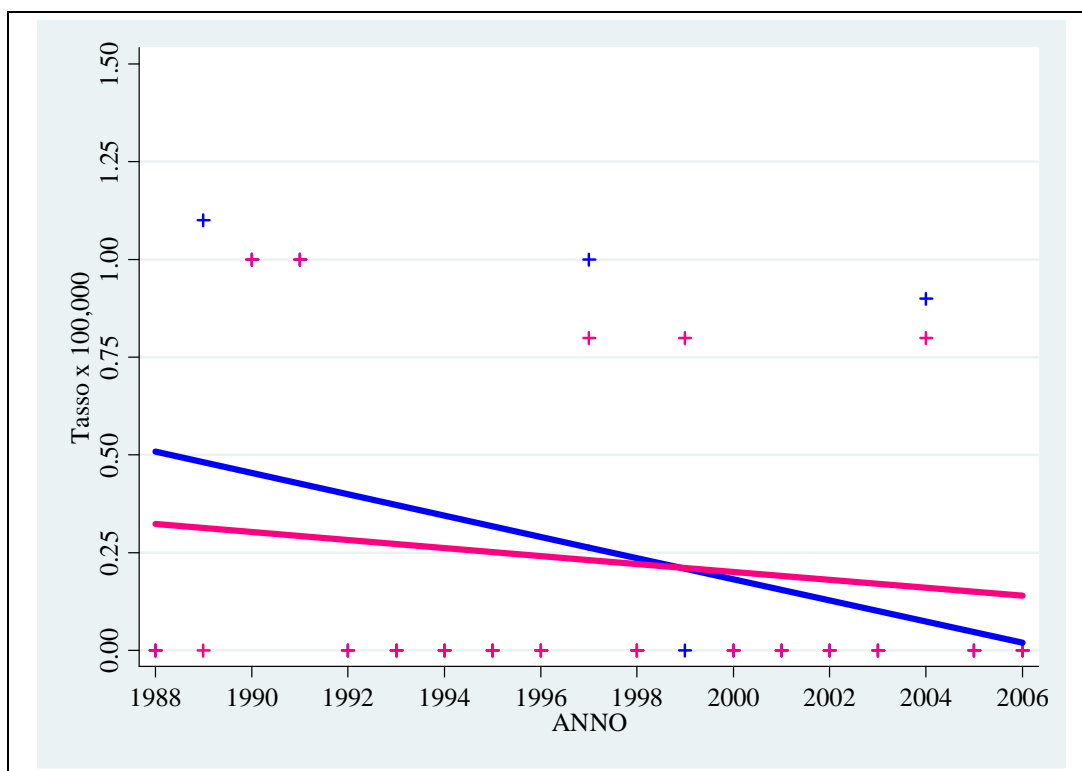


FIGURA 156 – T. CAVITA' NASALI (ICD: 160)

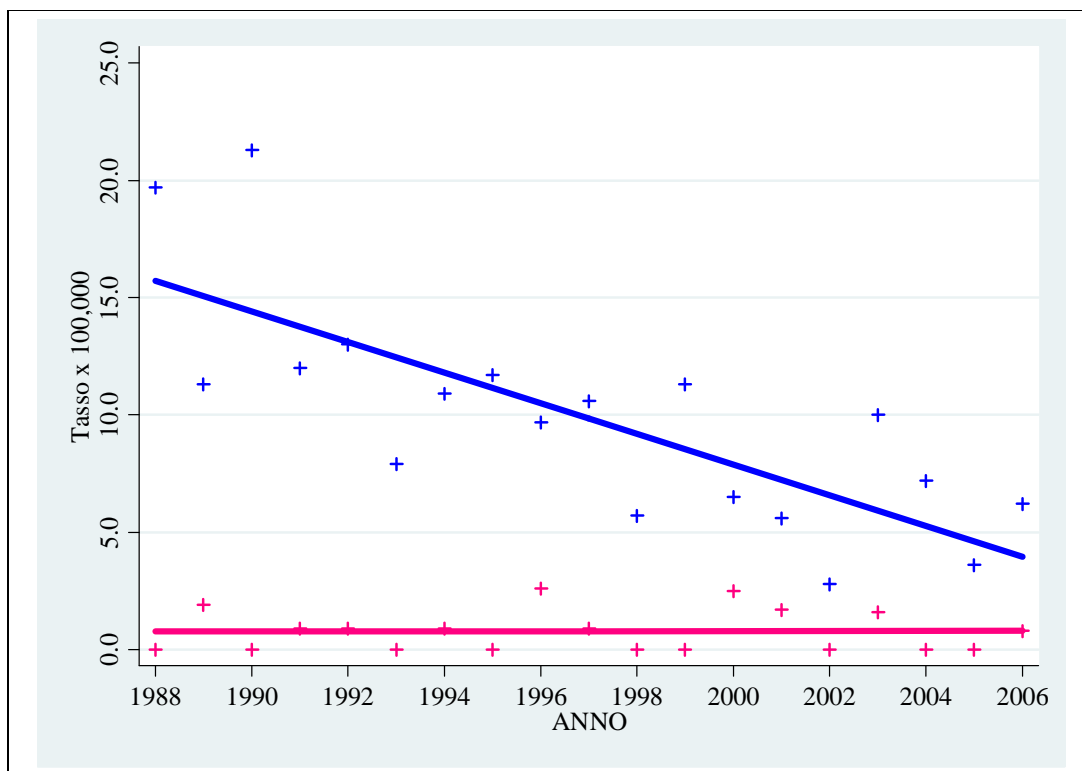
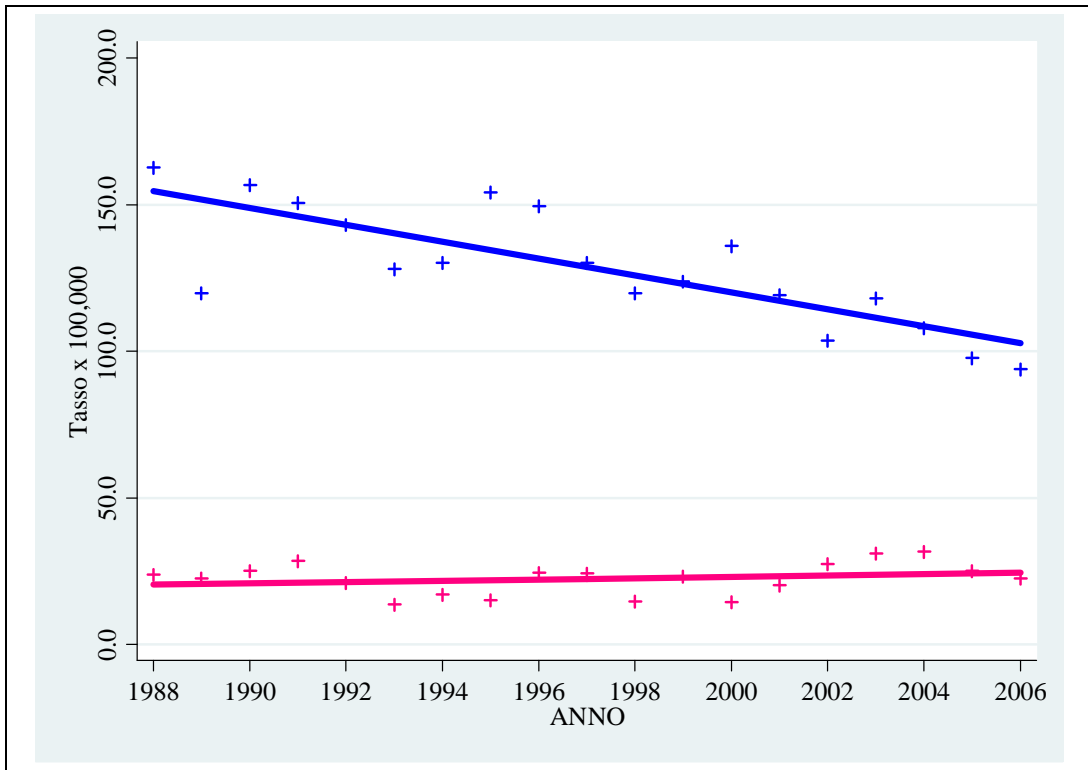
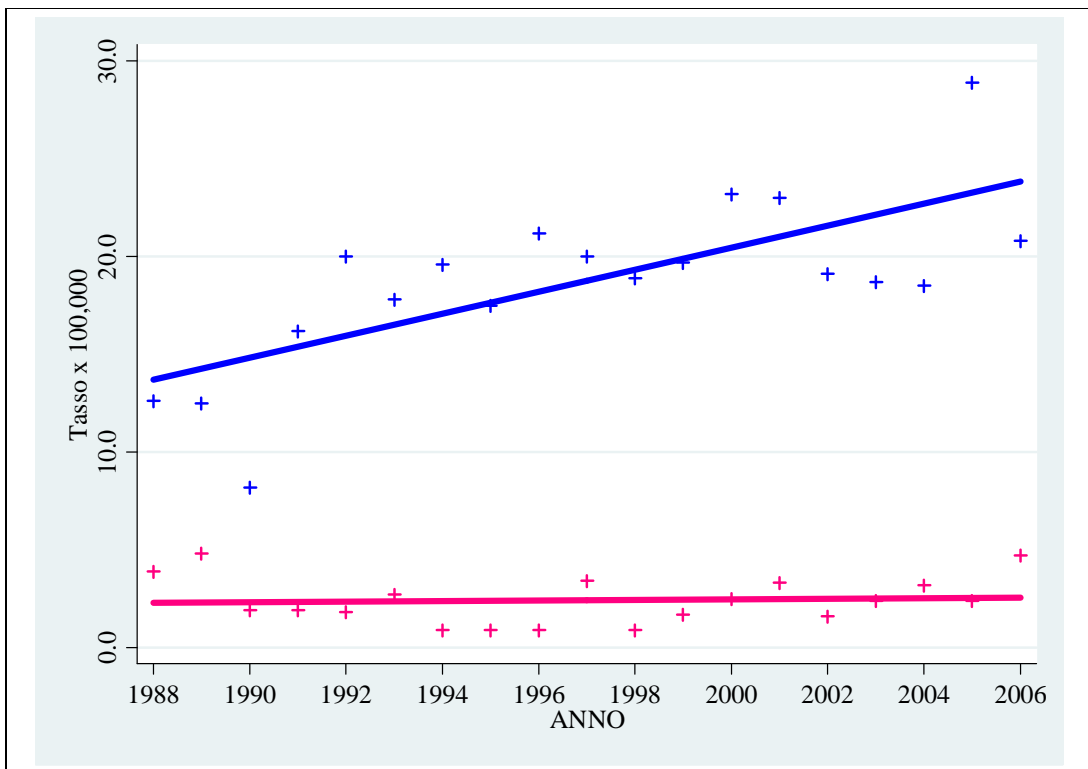


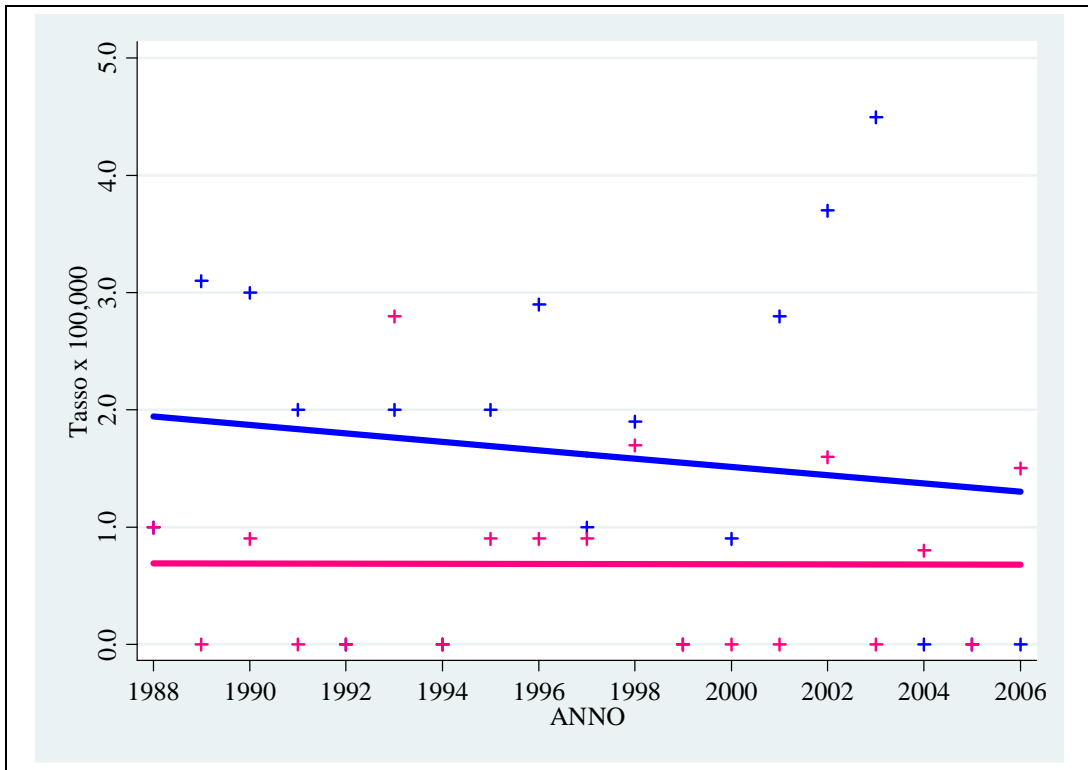
FIGURA 157 – T. LARINGE (ICD: 161)



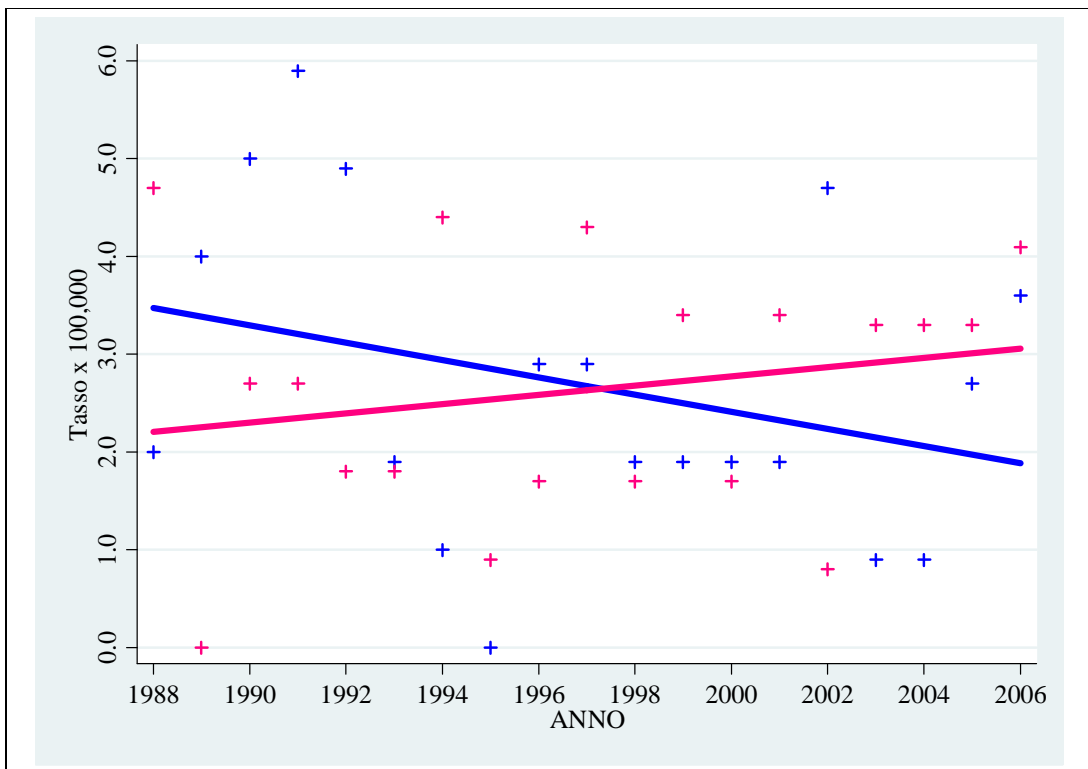
**FIGURA 158 – T. POLMONE (ICD: 162)**



**FIGURA 159 – T. PLEURA (ICD: 163)**

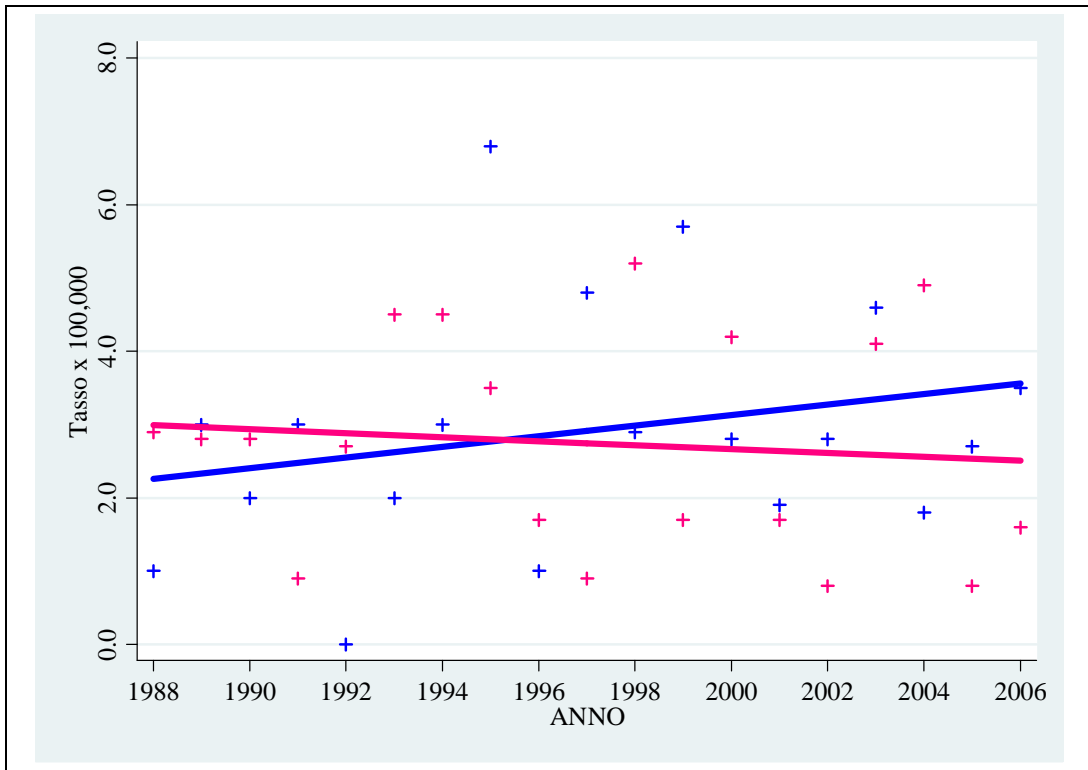


**FIGURA 160 – ALTRI T. TORACE (ICD: 164-165)**

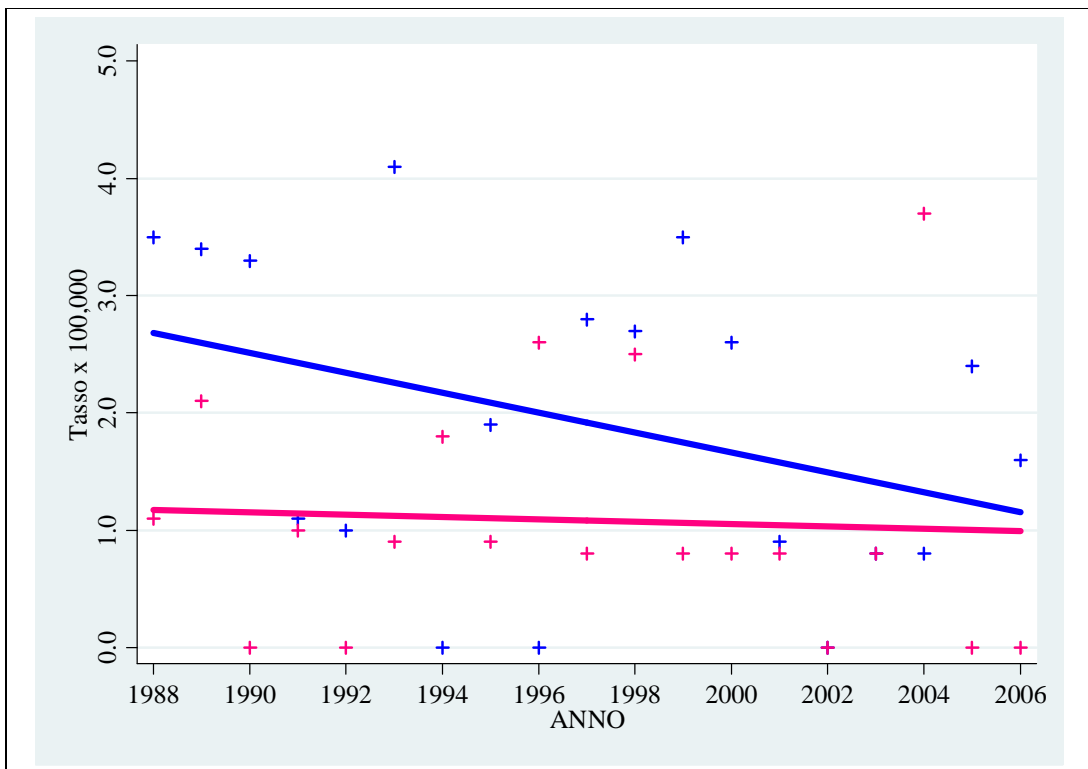


**FIGURA 161 – T. OSSA & TESSUTI MOLLI (ICD: 170, 171, 239.2)**





**FIGURA 162 – MELANOMA (ICD: 172)**



**FIGURA 163 – T. CUTE (ICD: 173)**

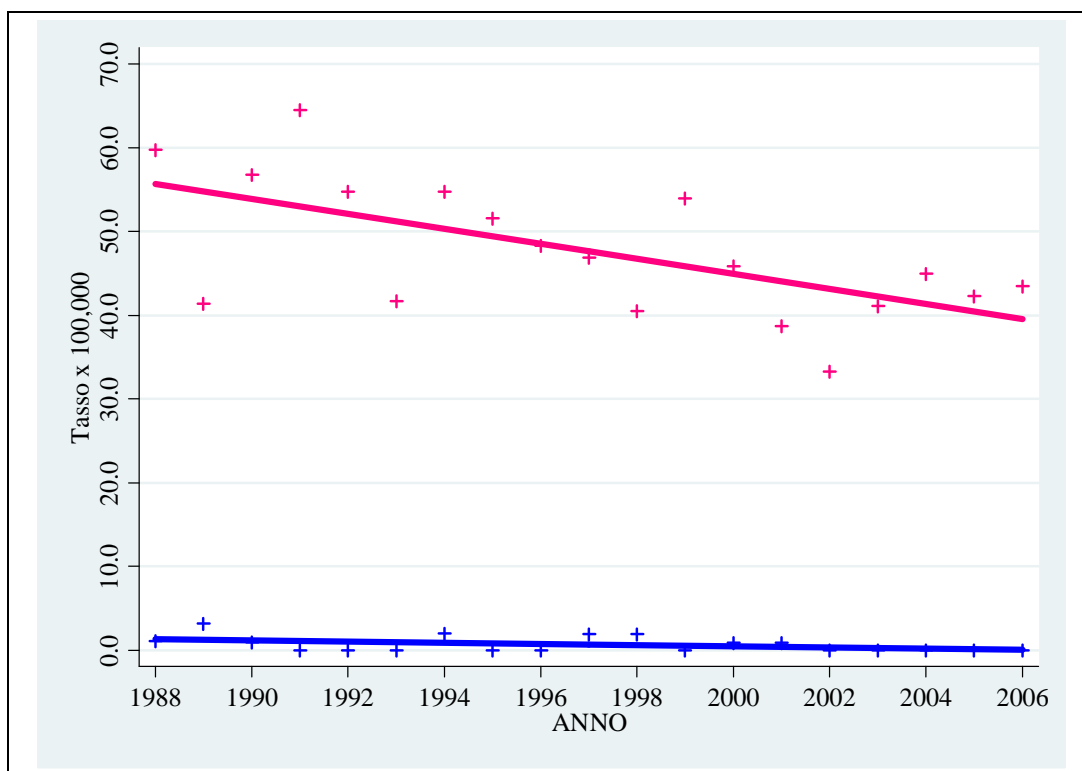


FIGURA 164 – T. MAMMELLA (MASCHI - ICD: 175) (FEMMINE - ICD: 174, 239.9)

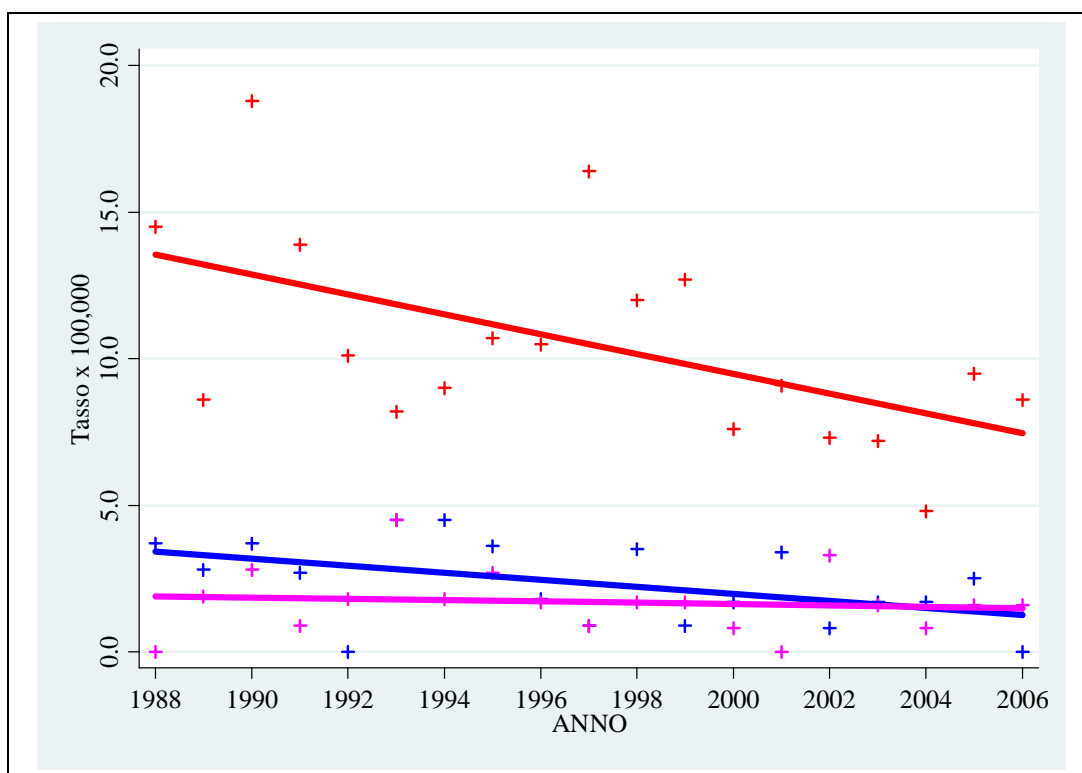


FIGURA 165 – T. UTERO NAS (ICD: 175) COLLO (ICD: 180) CORPO (ICD: 182)

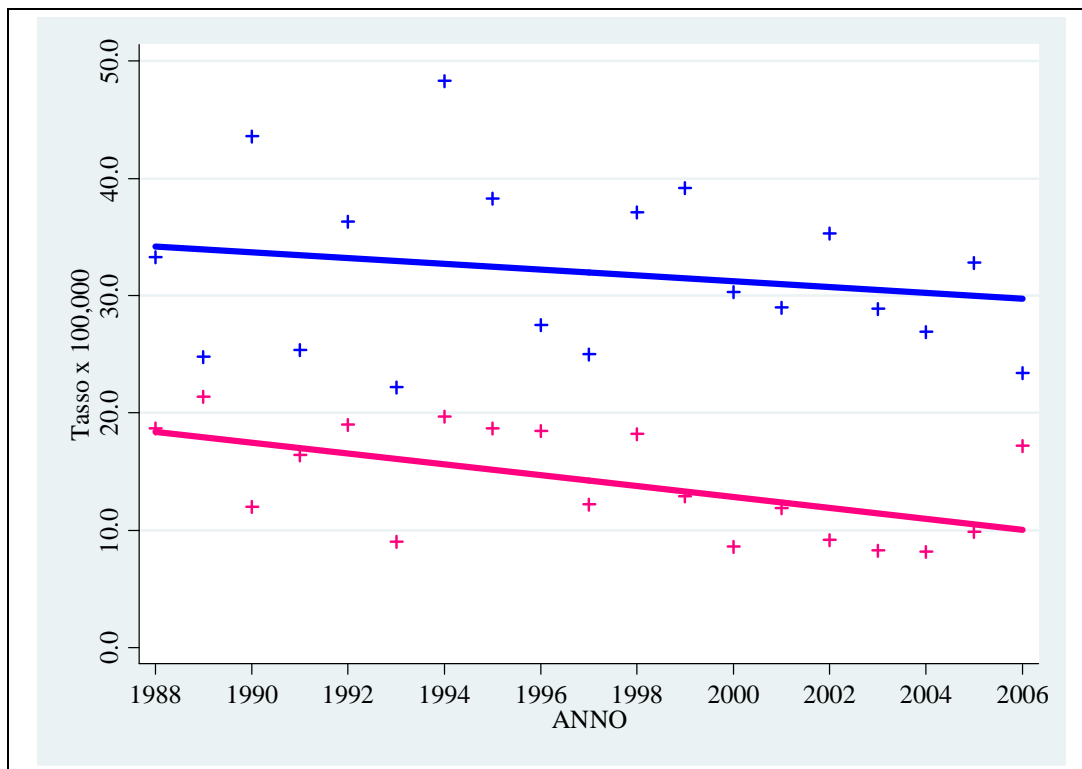


FIGURA 166 – T. PROSTATA (ICD: 185) & T. OVAIO (ICD: 183)

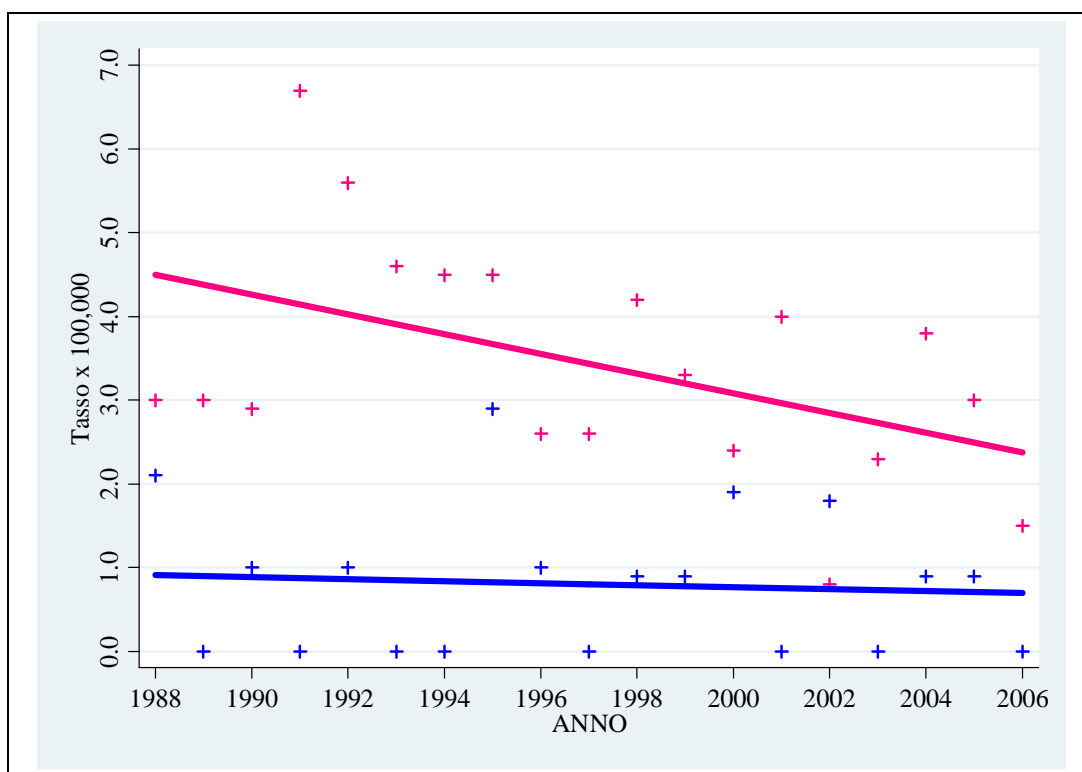
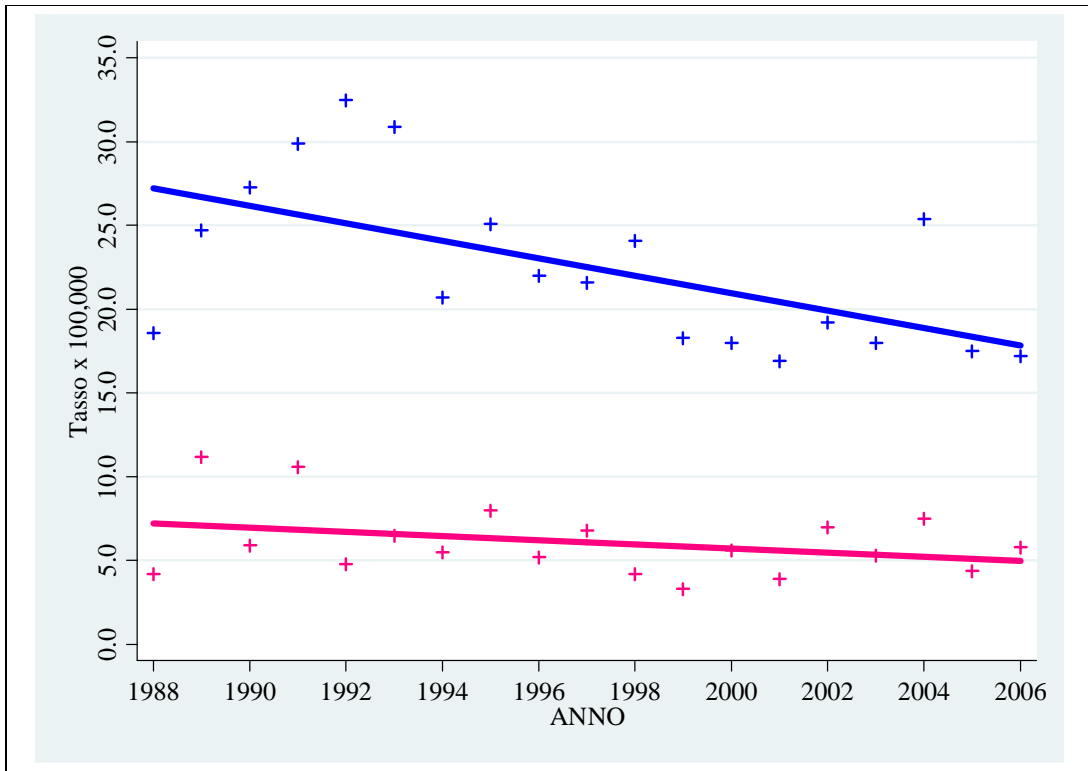
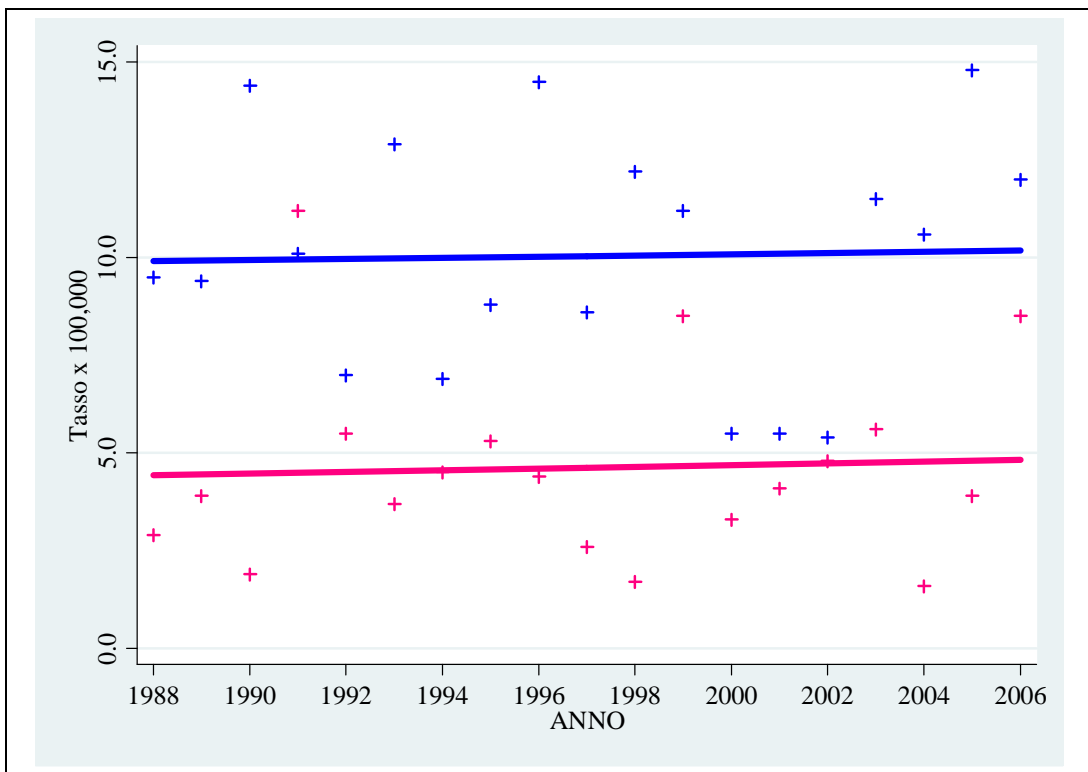


FIGURA 167 – ALTRI T. GENITALI MASCHILI (ICD: 186, 187) & FEMMINILI (ICD: 184)



**FIGURA 168 – T. VESCICA (ICD: 188, 239.4)**



**FIGURA 169 – T. RENE (ICD: 189)**

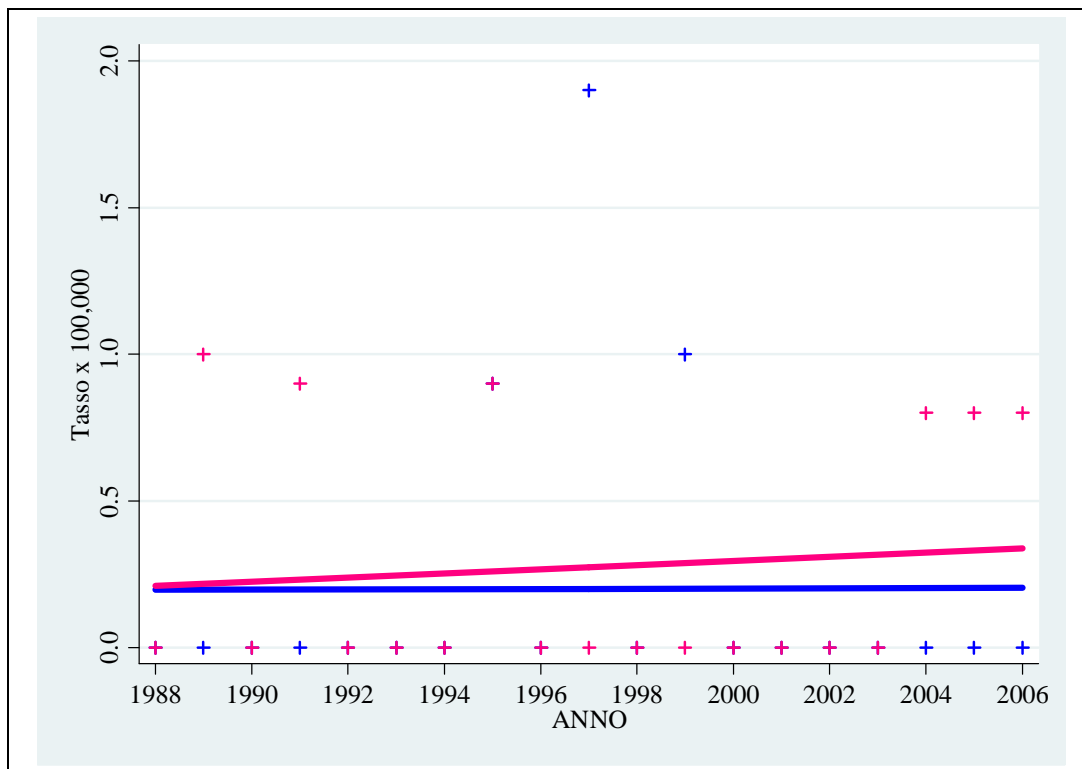


FIGURA 170 – T. OCCHIO (ICD: 190)

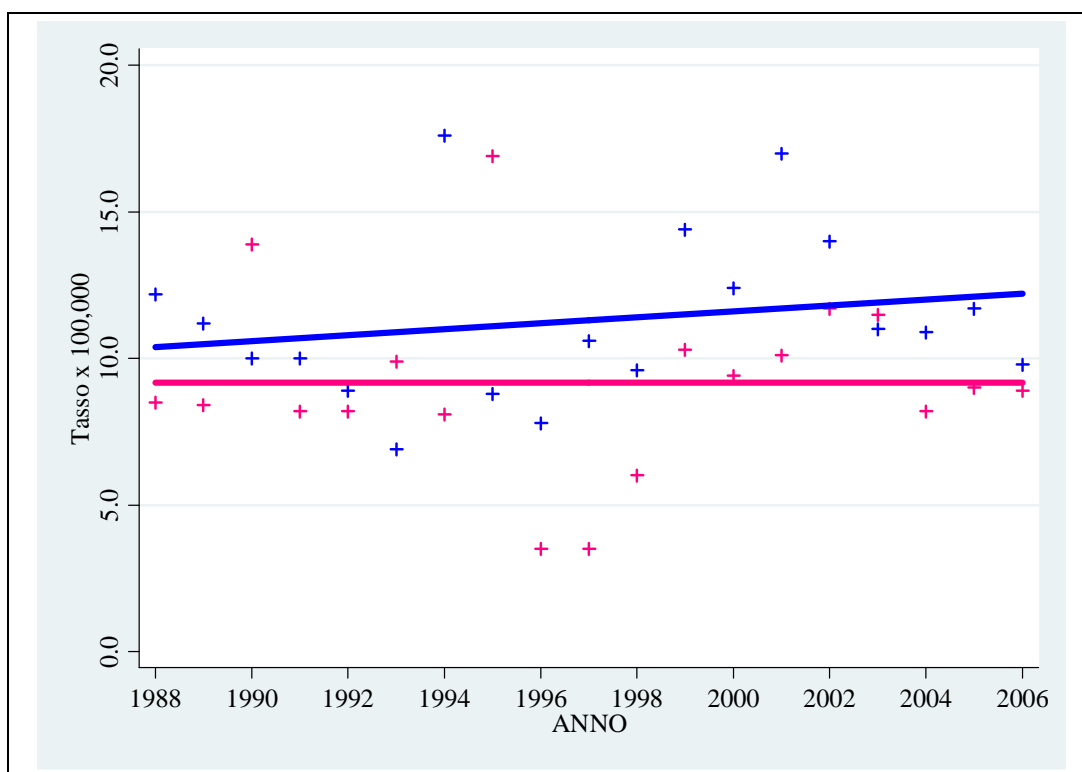


FIGURA 171 – T. SISTEMA NERVOSO CENTRALE (ICD: 191, 192, 225, 237, 239.6, 239.7)

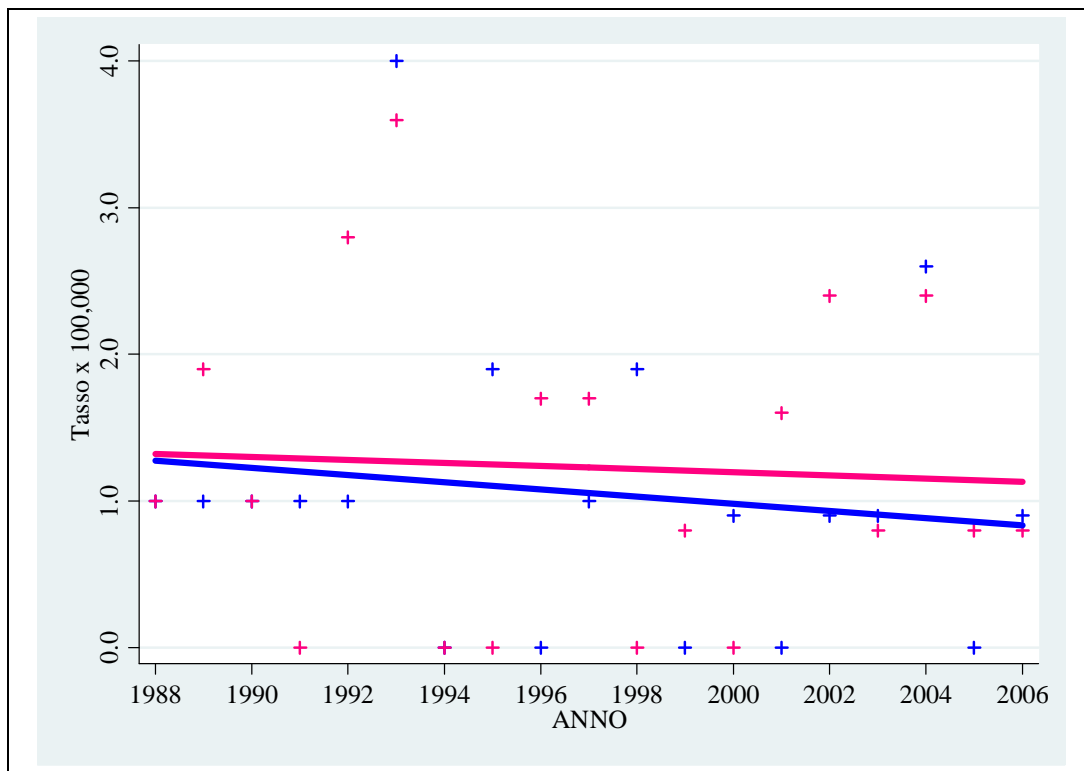


FIGURA 172 - T. TIROIDE (ICD: 193)

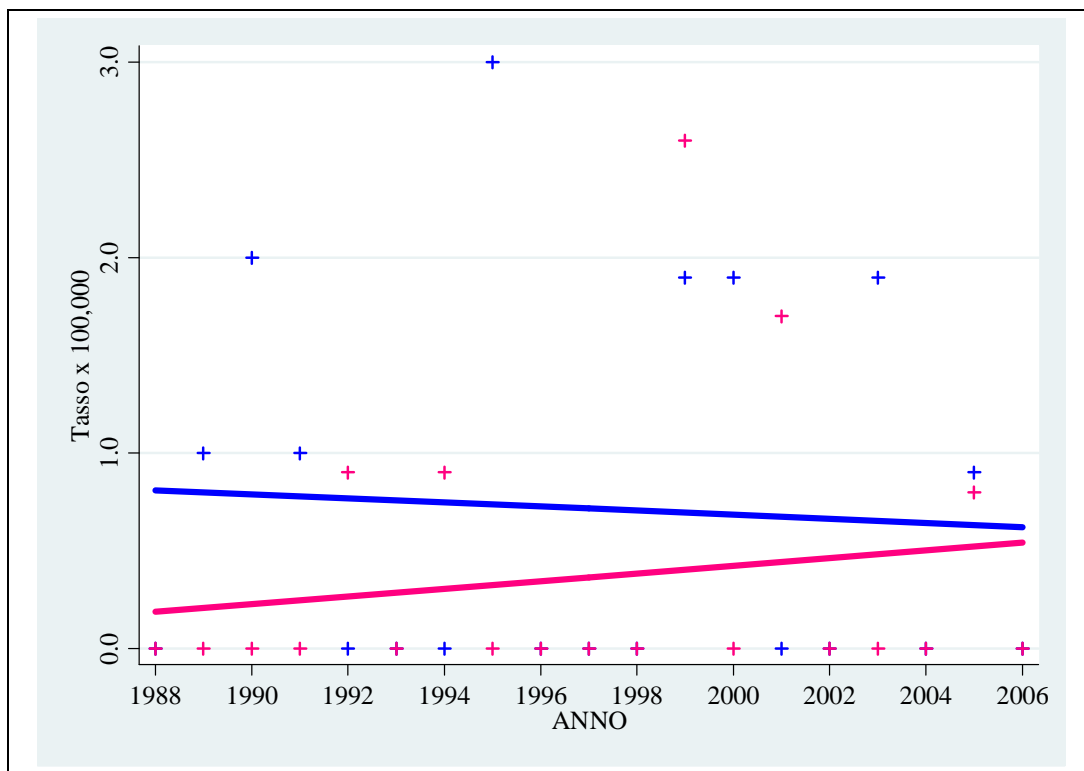
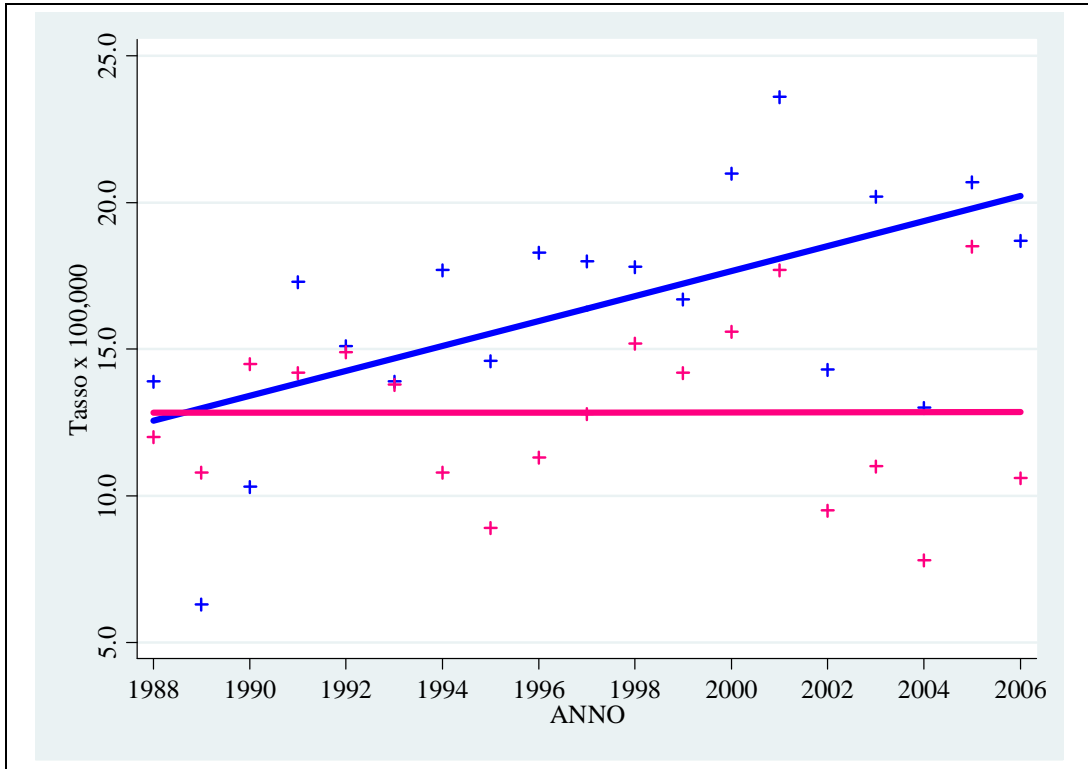
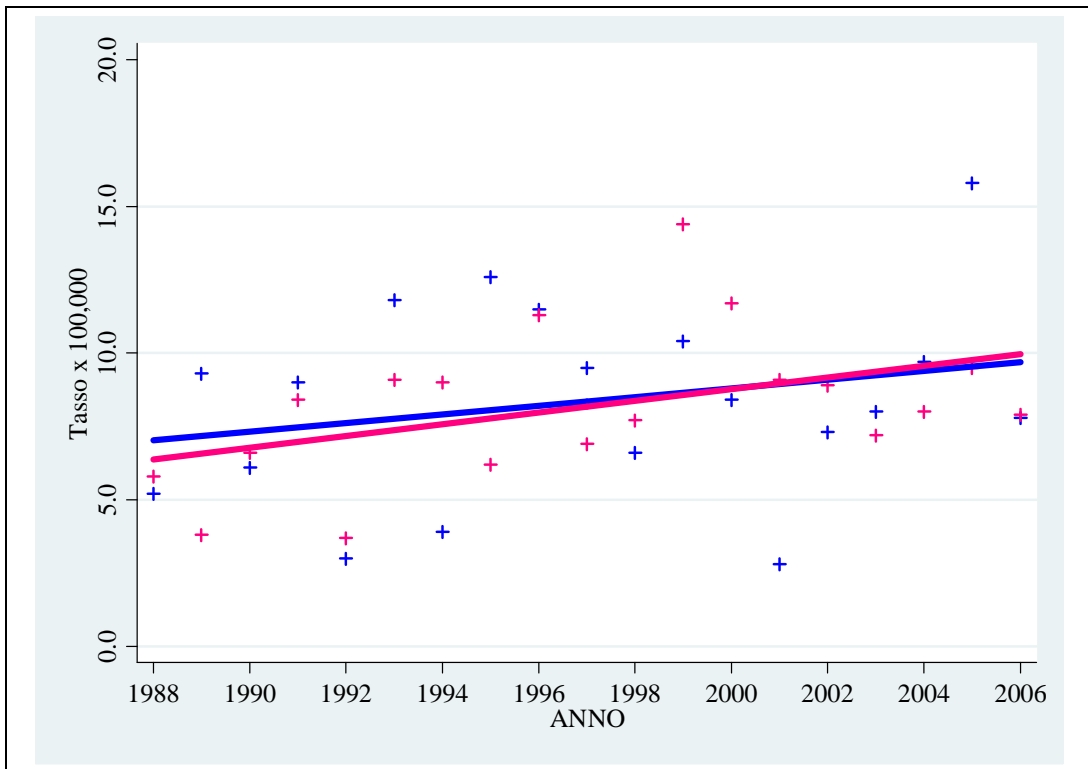


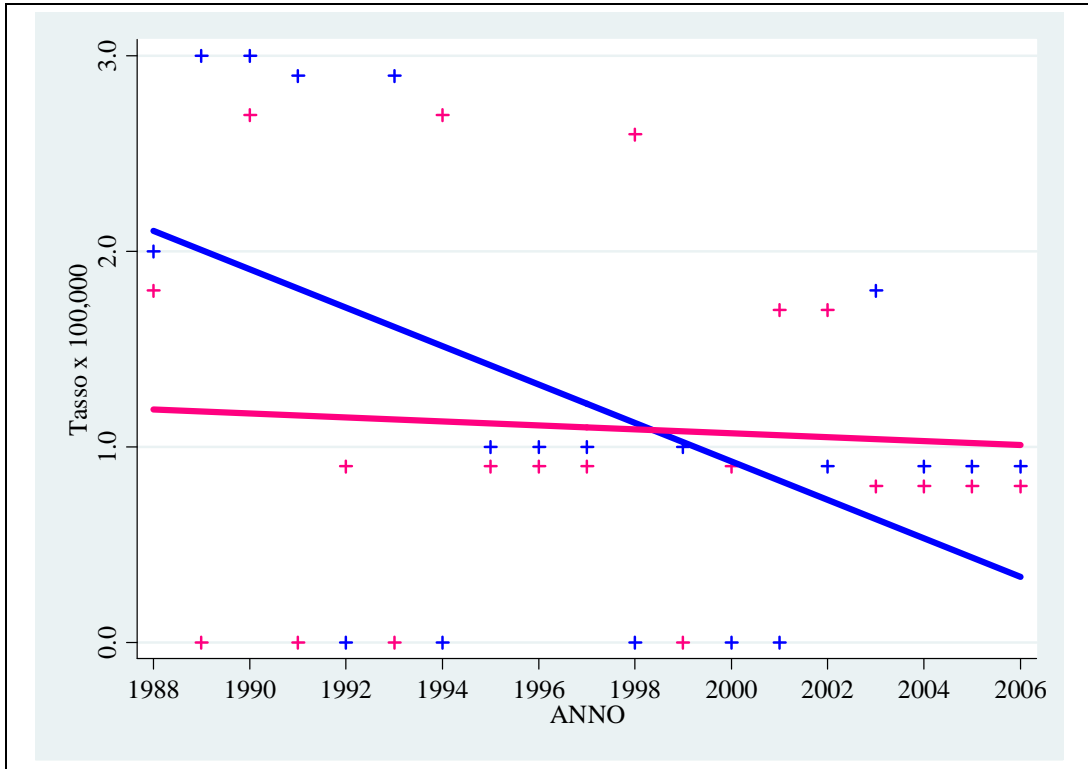
FIGURA 173 - ALTRI T. SISTEMA ENDOCRINO (ICD: 194)



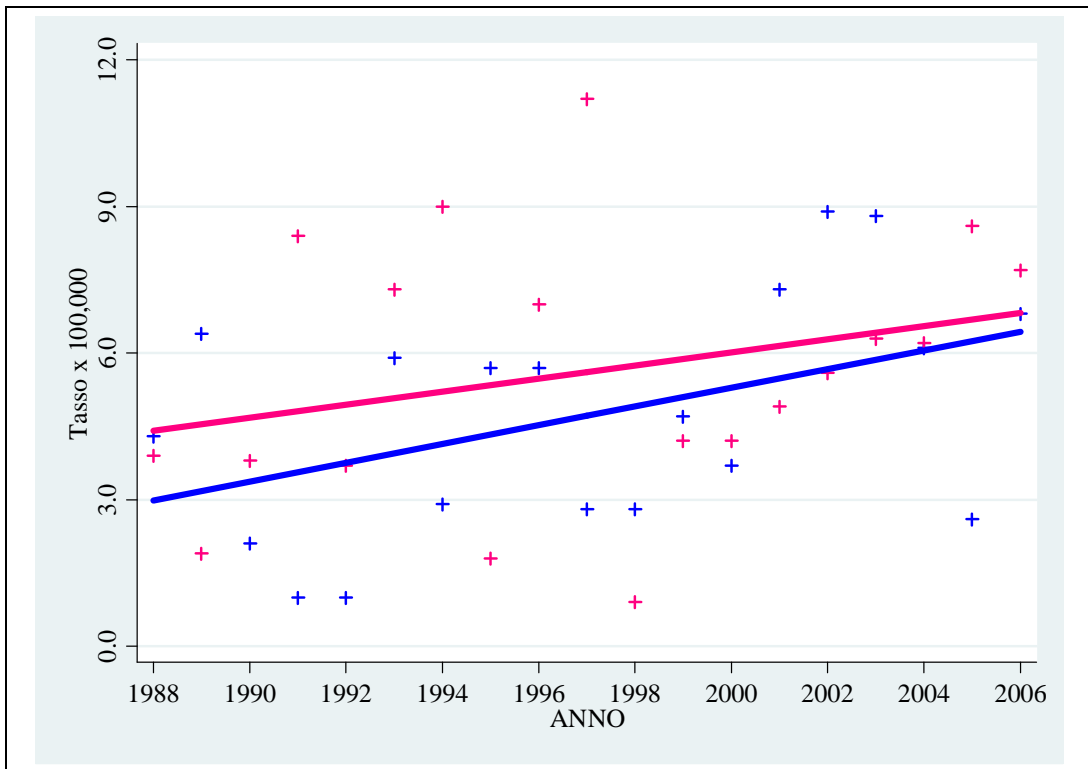
**FIGURA 174 – T. SEDI INCERTE E MAL DEFINITE (ICD: 195, 199)**



**FIGURA 175 – LINFOMA NON-HODGKIN (ICD: 200, 202)**

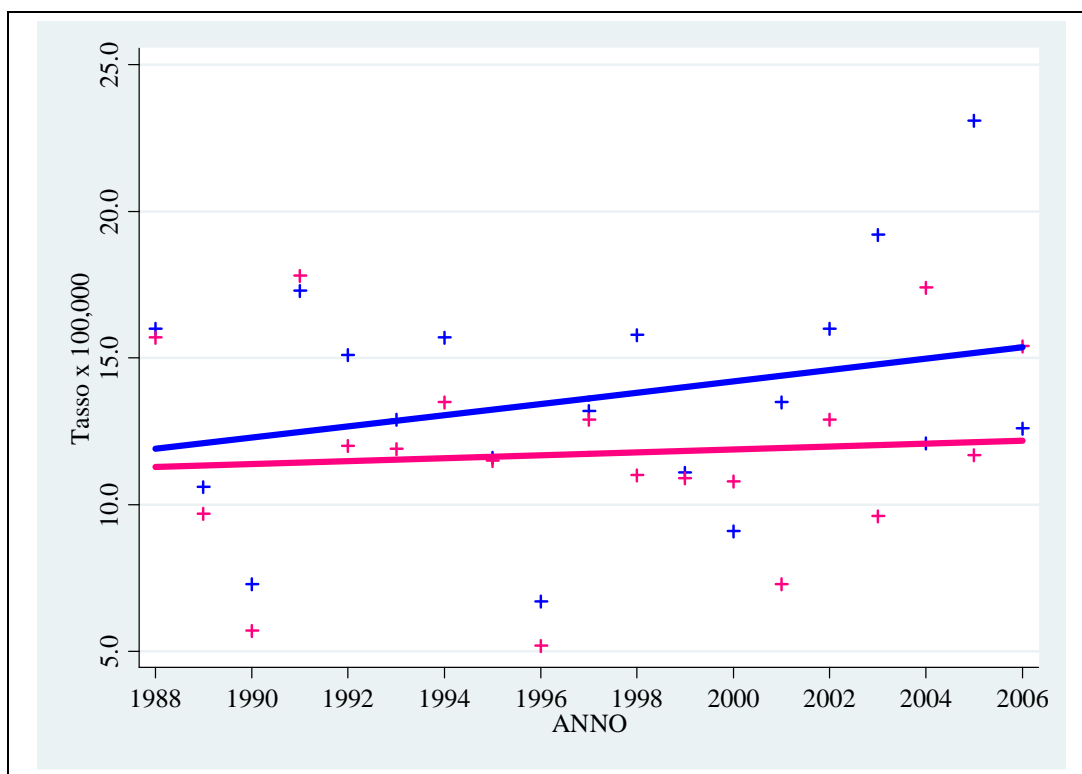


**FIGURA 176 – LINFOMA DI HODGKIN (ICD: 201)**

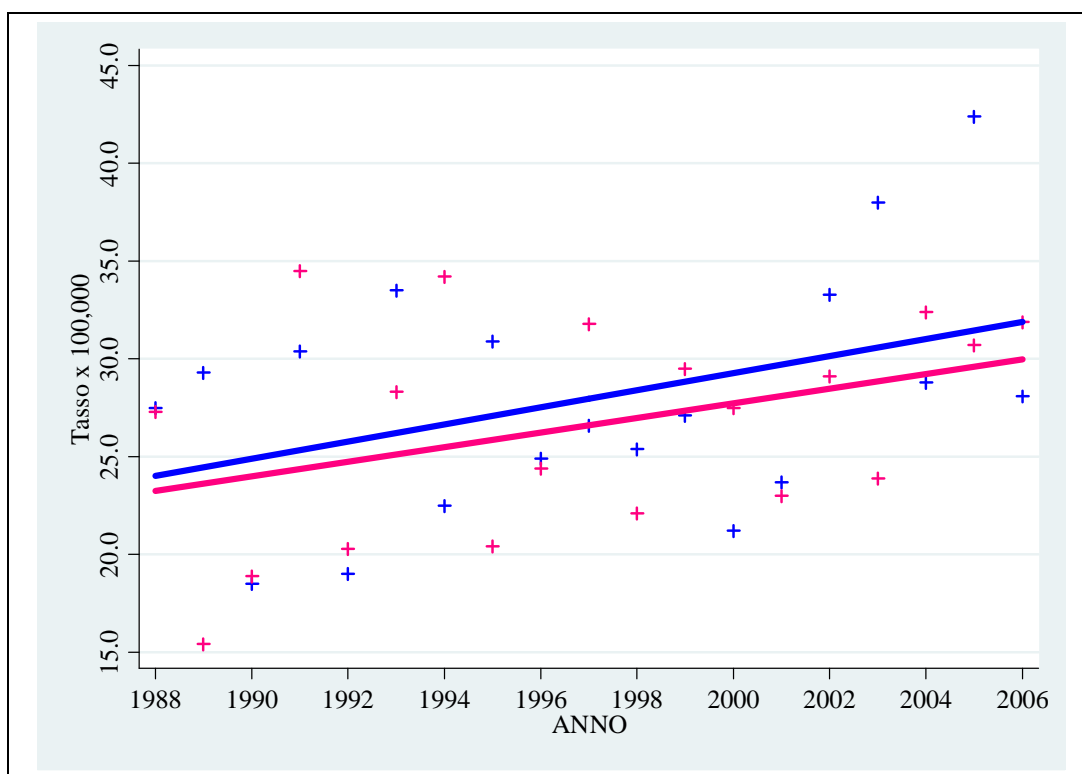


**FIGURA 177 – MIELOMA MULTIPLIO (ICD: 203)**

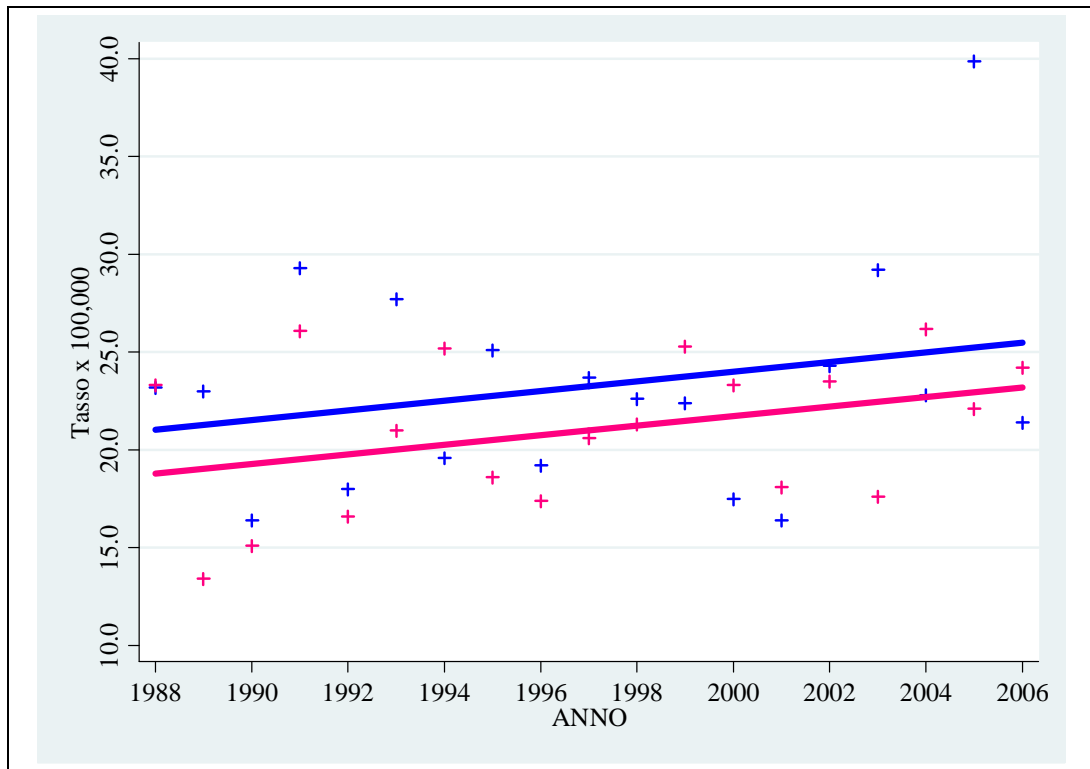




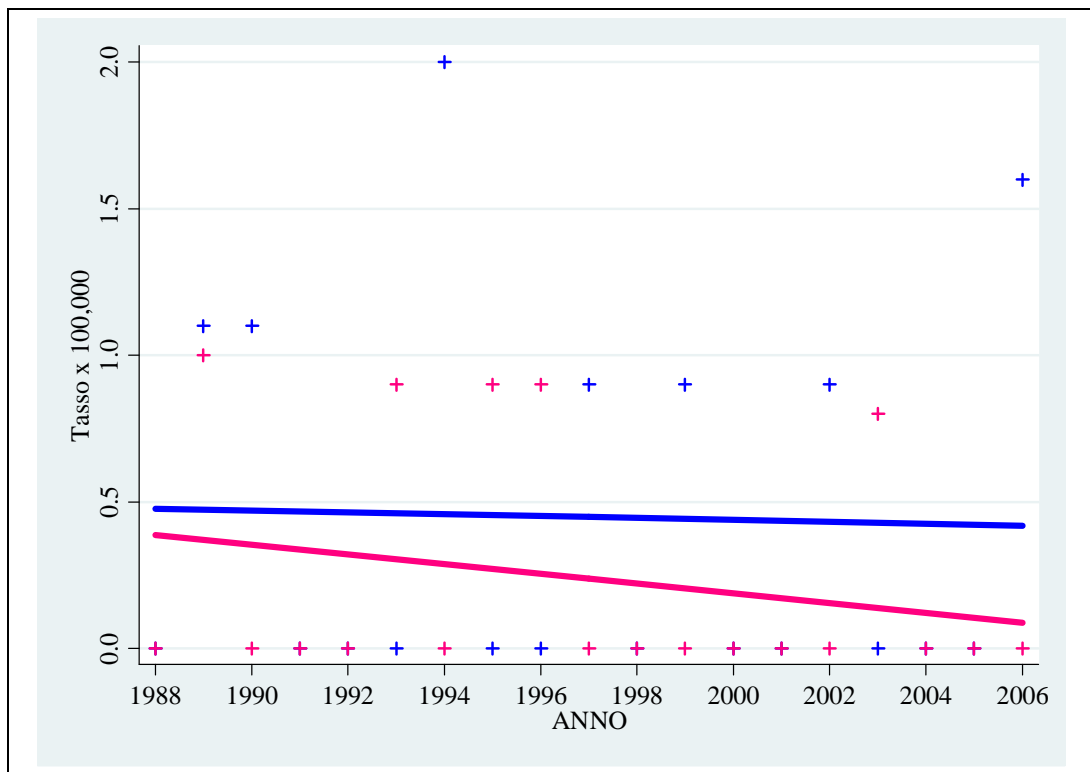
**FIGURA 178 – LEUCEMIE (ICD: 204-208)**



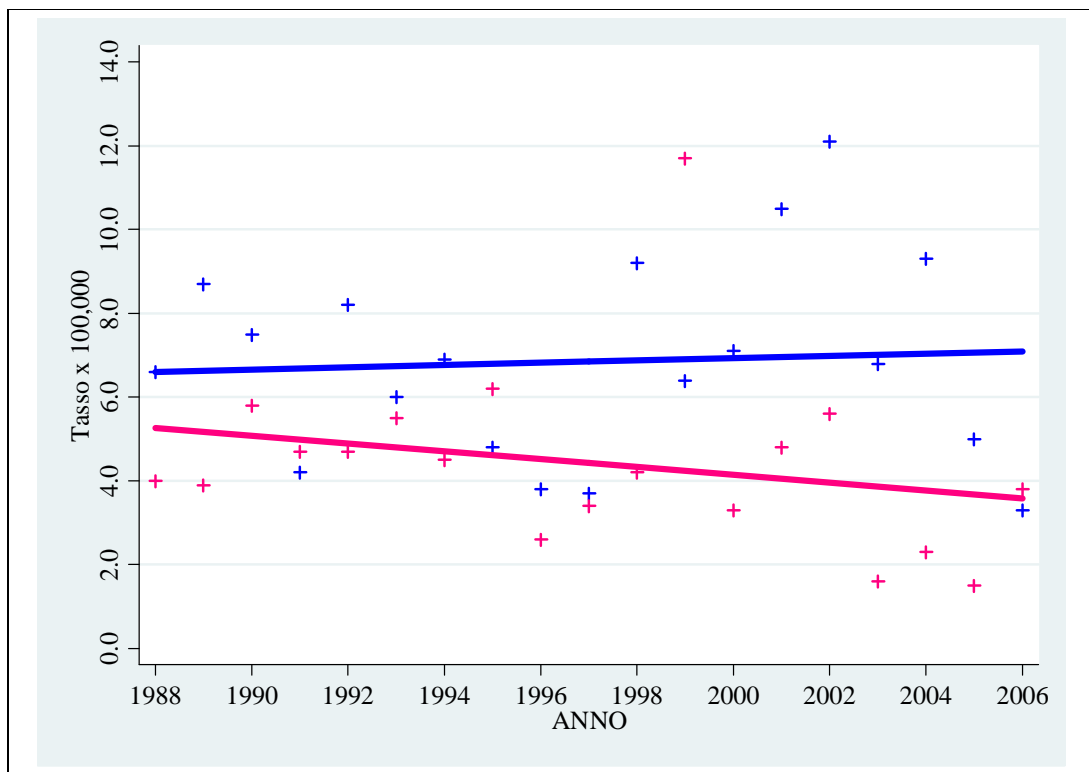
**FIGURA 179 – T. SISTEMA EMOLINFOPOIETICO (ICD: 200-208)**



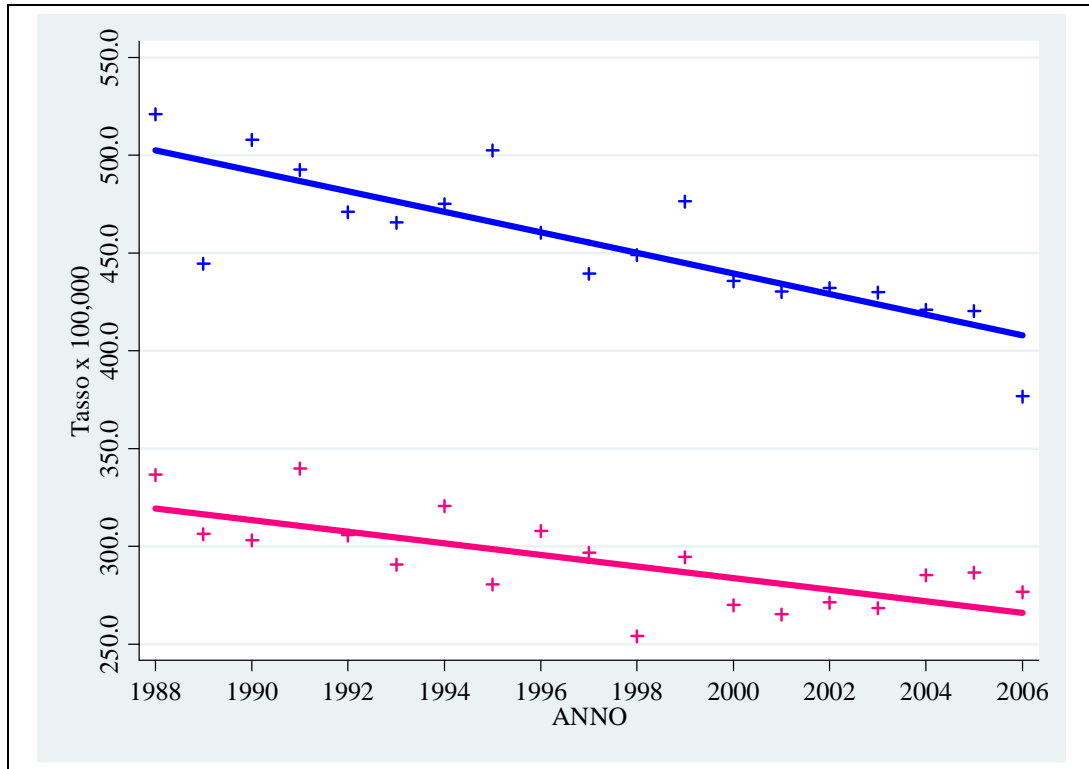
**FIGURA 180 – T. SISTEMA EMOLINFOPOIETICO (ICD: 200-208) ECCEPPO MIELOMA MULTIPLO (ICD: 203)**



**FIGURA 181 – T. BENIGNI (ICD: 210-229)**



**FIGURA 182 – T. NON ALTRIMENTI SPECIFICATI (ICD: 239)**



**FIGURA 183 – TUTTE LE NEOPLASIE (ICD: 140-239)**