

## ALLEGATO 2

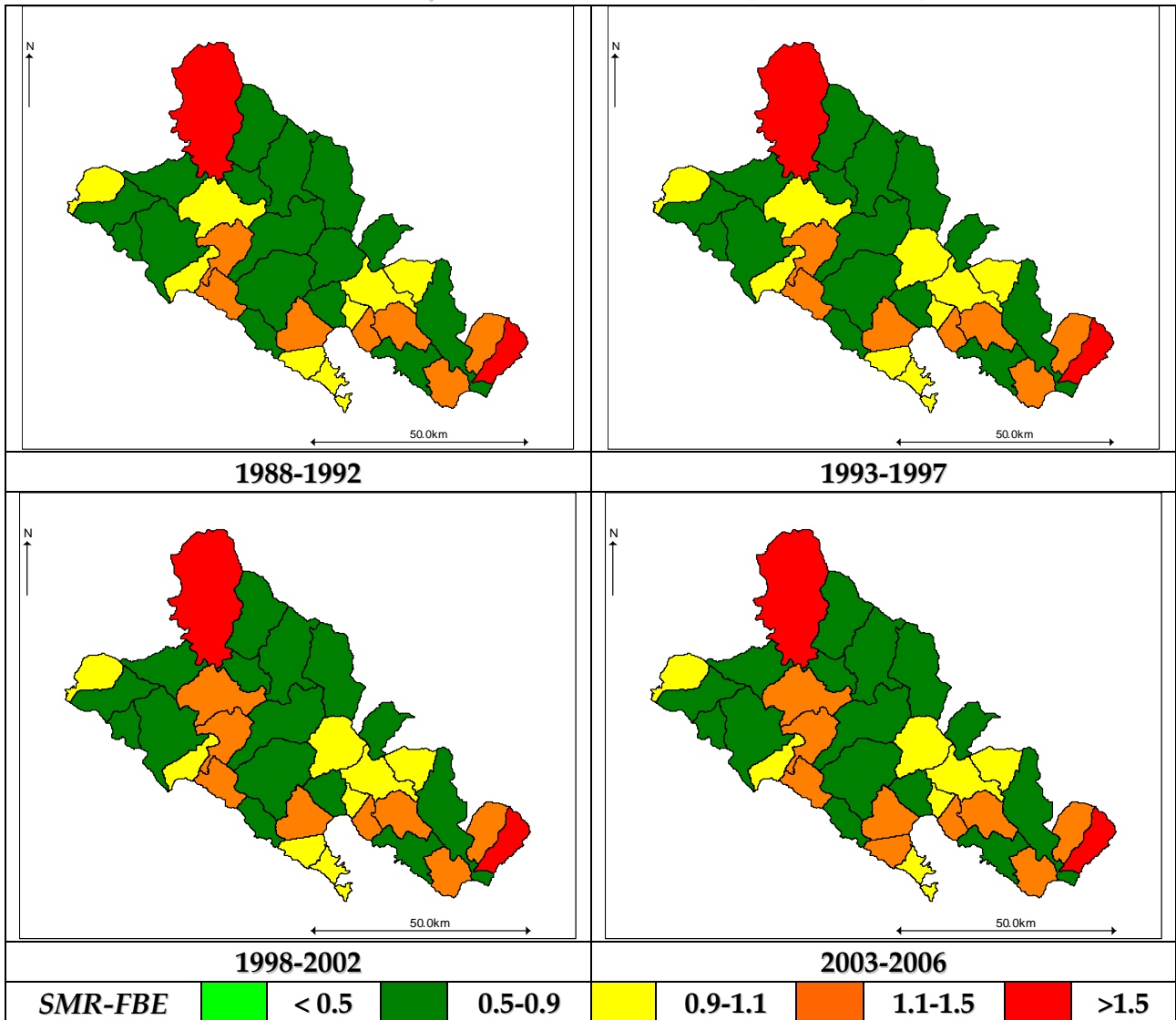
***DISTRIBUZIONE GEOGRAFICA  
DELLA TENDENZA QUINQUENNALE  
DEL RISCHIO RELATIVO DI MORTE  
PER CANCRO NELLA ASL 5,1988-2006***



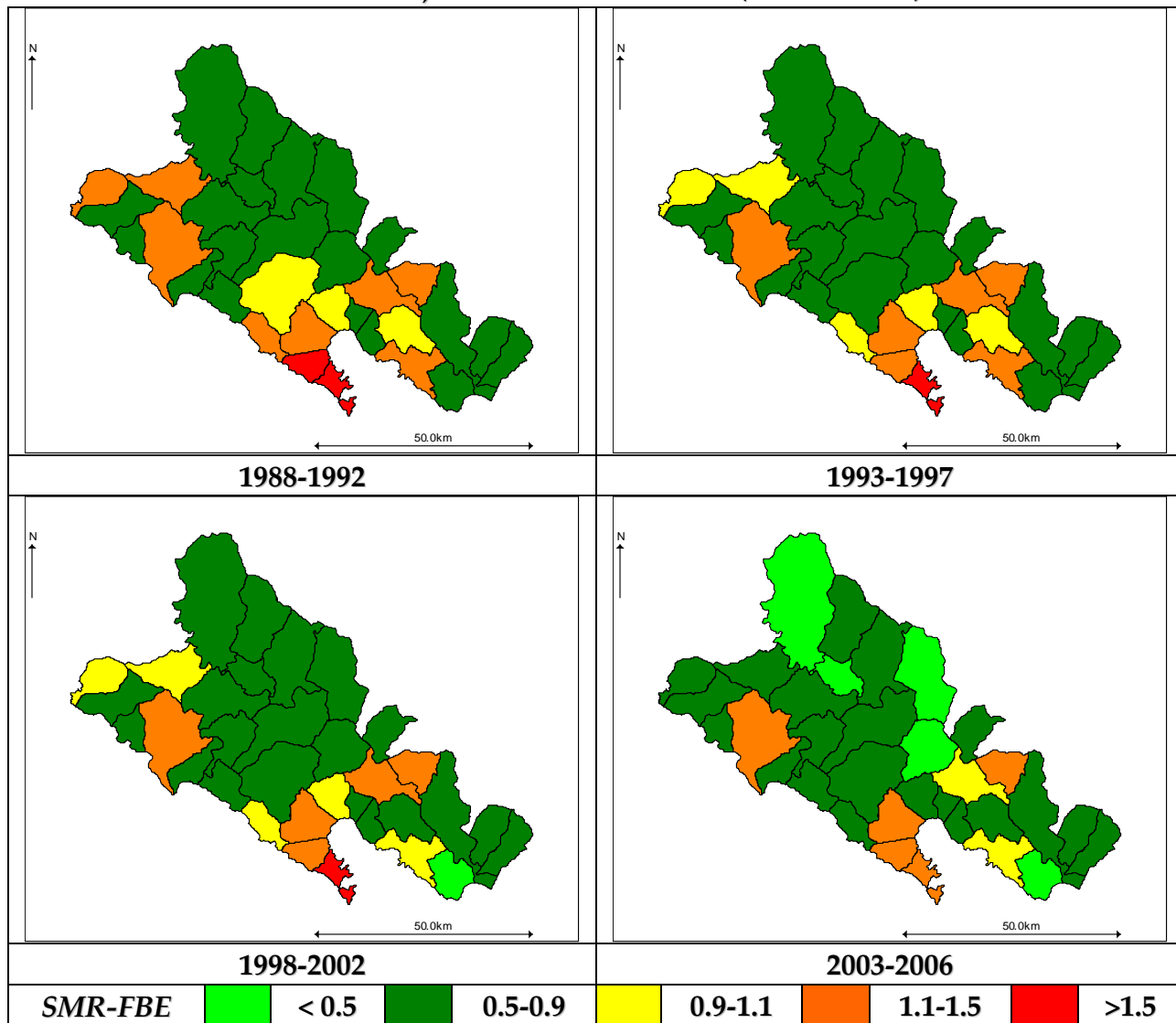
<i>N</i>	<i>AREA</i>	<i>CODICE</i>	<i>N</i>	<i>AREA</i>	<i>CODICE</i>	<i>N</i>	<i>AREA</i>	<i>CODICE</i>
1	Ameglia	AME	2	Arcola	ARC	3	Beverino	BEV
4	Bolano	BOL	5	Bonassola	BON	6	Borghetto	BOR
7	Brugnato	BRU	8	Calice C	CAL	9	CaSMRodano	CAR
10	Castelnuovo M	CAS	11	Deiva M	DEI	12	Follo	FOL
13	Framura	FRA	14	Lerici	LER	15	Levanto	LEV
16	Monterosso M	MON	17	Ortonovo	ORT	18	Pignone	PIG
19	Portovenere	POR	20	Riccò G	RIC	21	Riomaggiore	RIO
22	Rocchetta V	ROC	23	S. Stefano	SAN	24	Sarzana	SAR
25	Sesta G	SES	26	Vernazza	VER	27	Vezzano L	VEZ
28	Zignago	ZIG	29	La Spezia C1	SP1	30	La Spezia C2	SP2
31	La Spezia C3	SP3	32	La Spezia C4	SP4	33	La Spezia C5	SP5

**SUDDIVISIONE GEOGRAFICA DEL TERRITORIO DELLA ASL 5.**

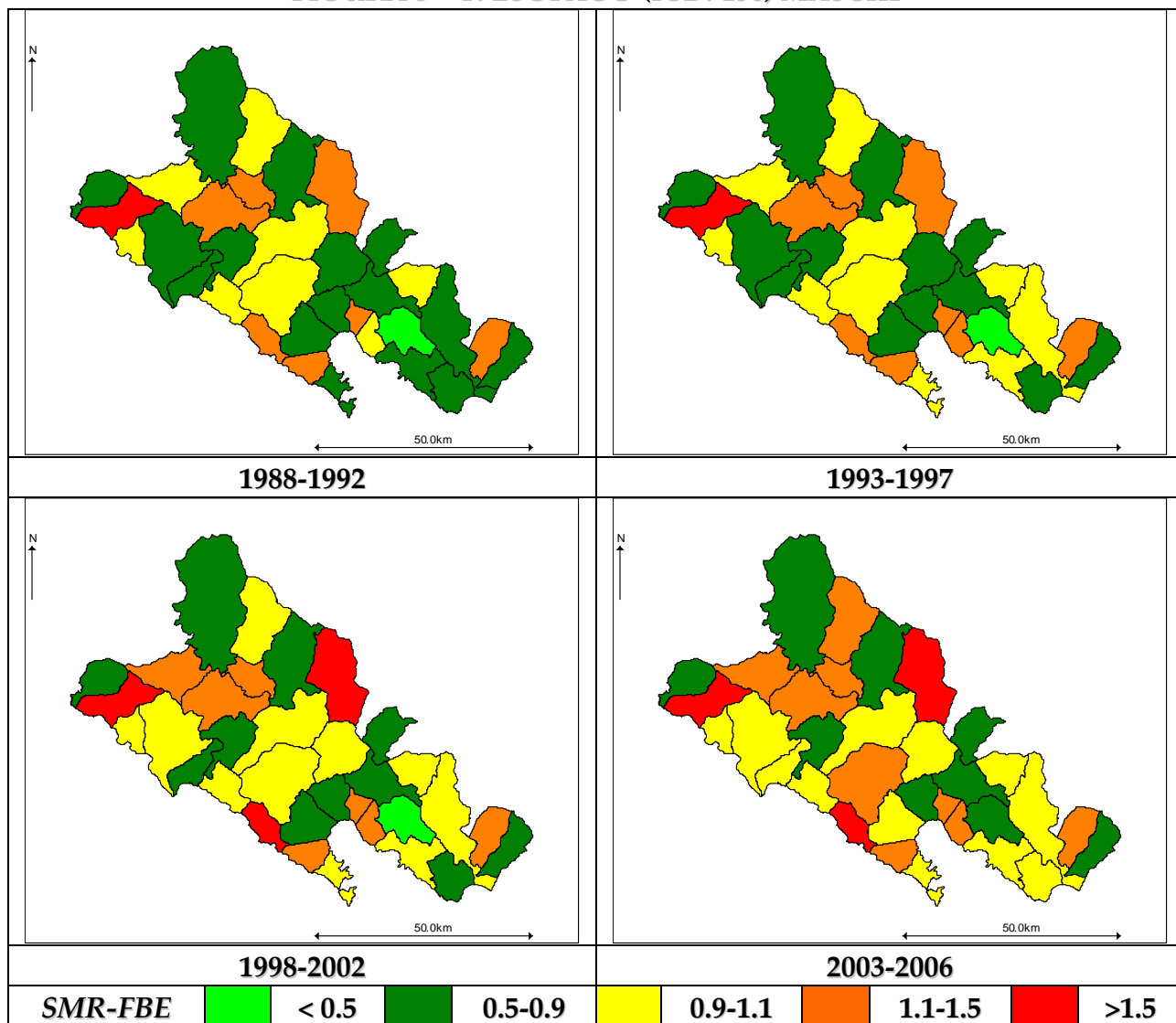
**FIGURA 1 – T. BOCCA, LINGUA & FARINGE (ICD: 140-149) MASCHI**



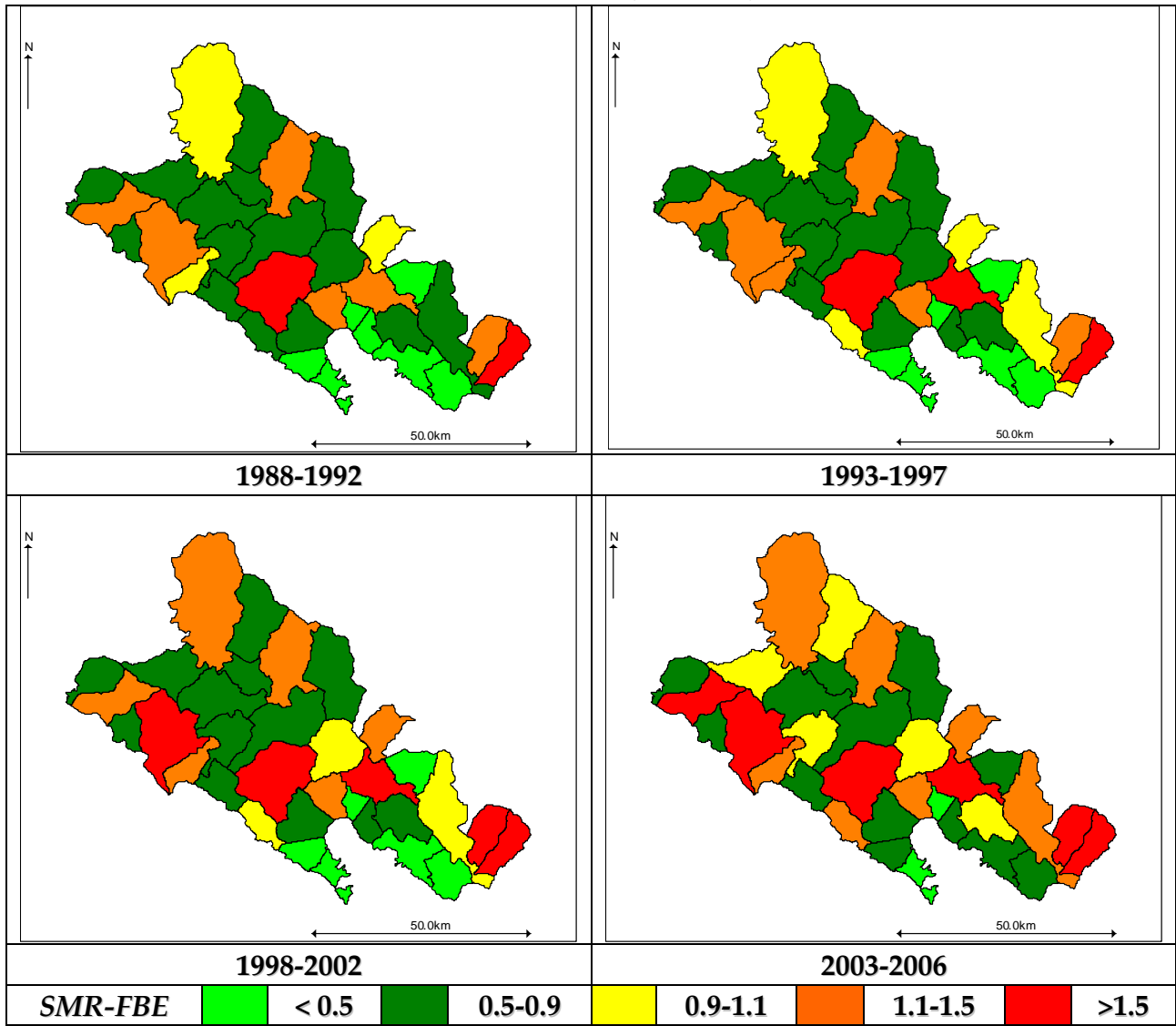
**FIGURA 2 – T. BOCCA, LINGUA & FARINGE (ICD: 140-149) FEMMINE**



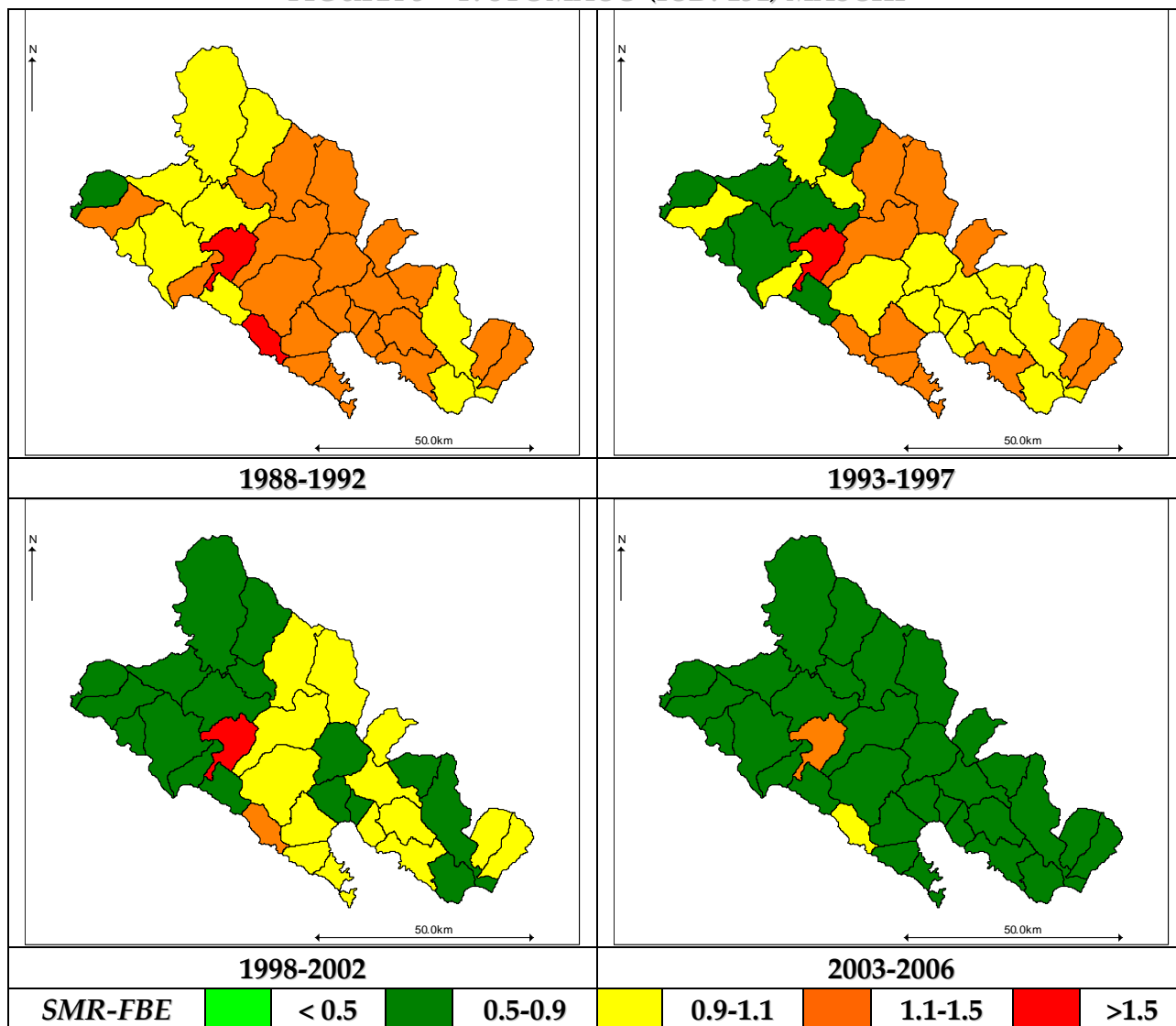
**FIGURA 3 – T. ESOFAGO (ICD: 150) MASCHI**



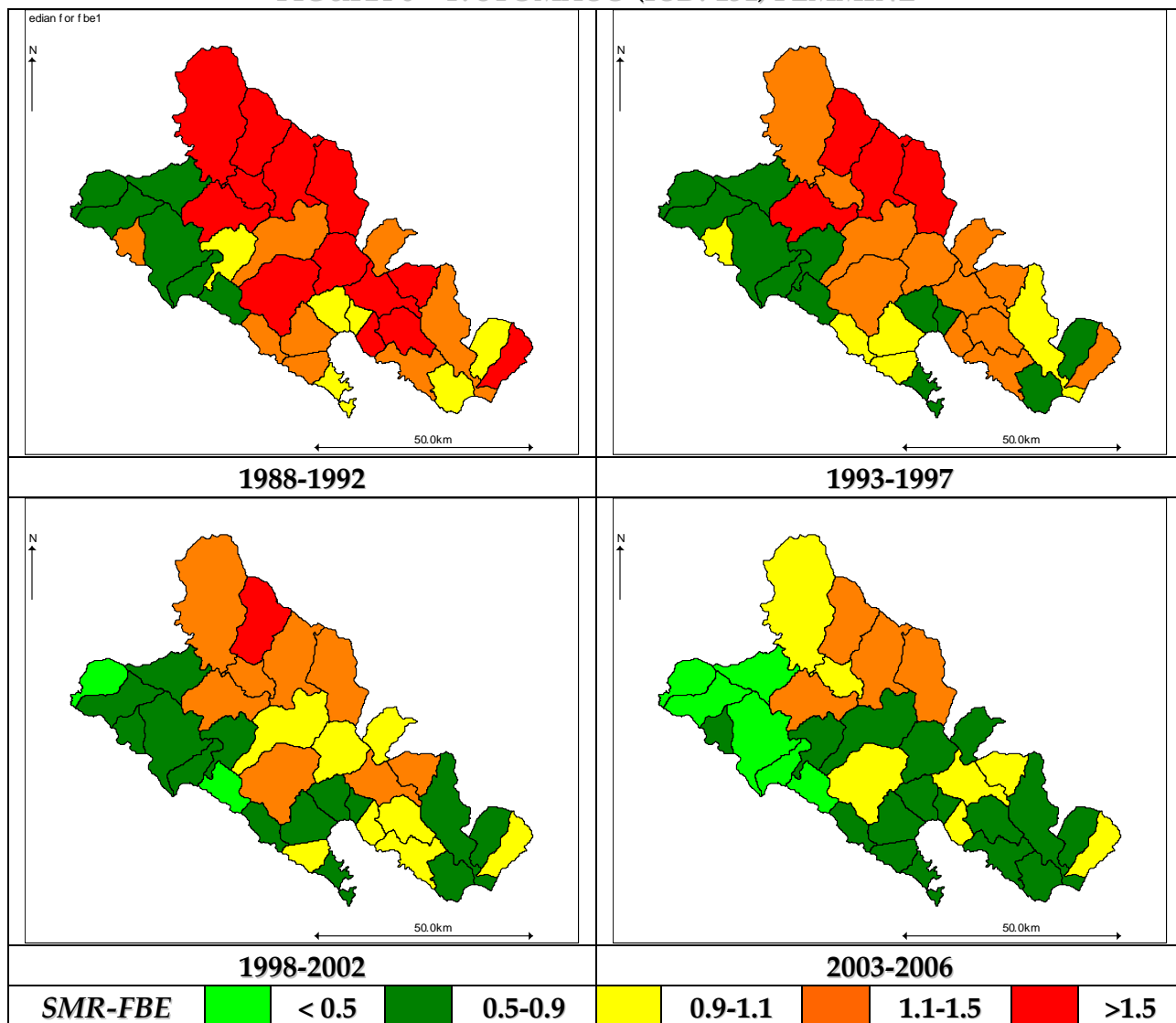
**FIGURA 4 – T. ESOFAGO (ICD: 150) FEMMINE**



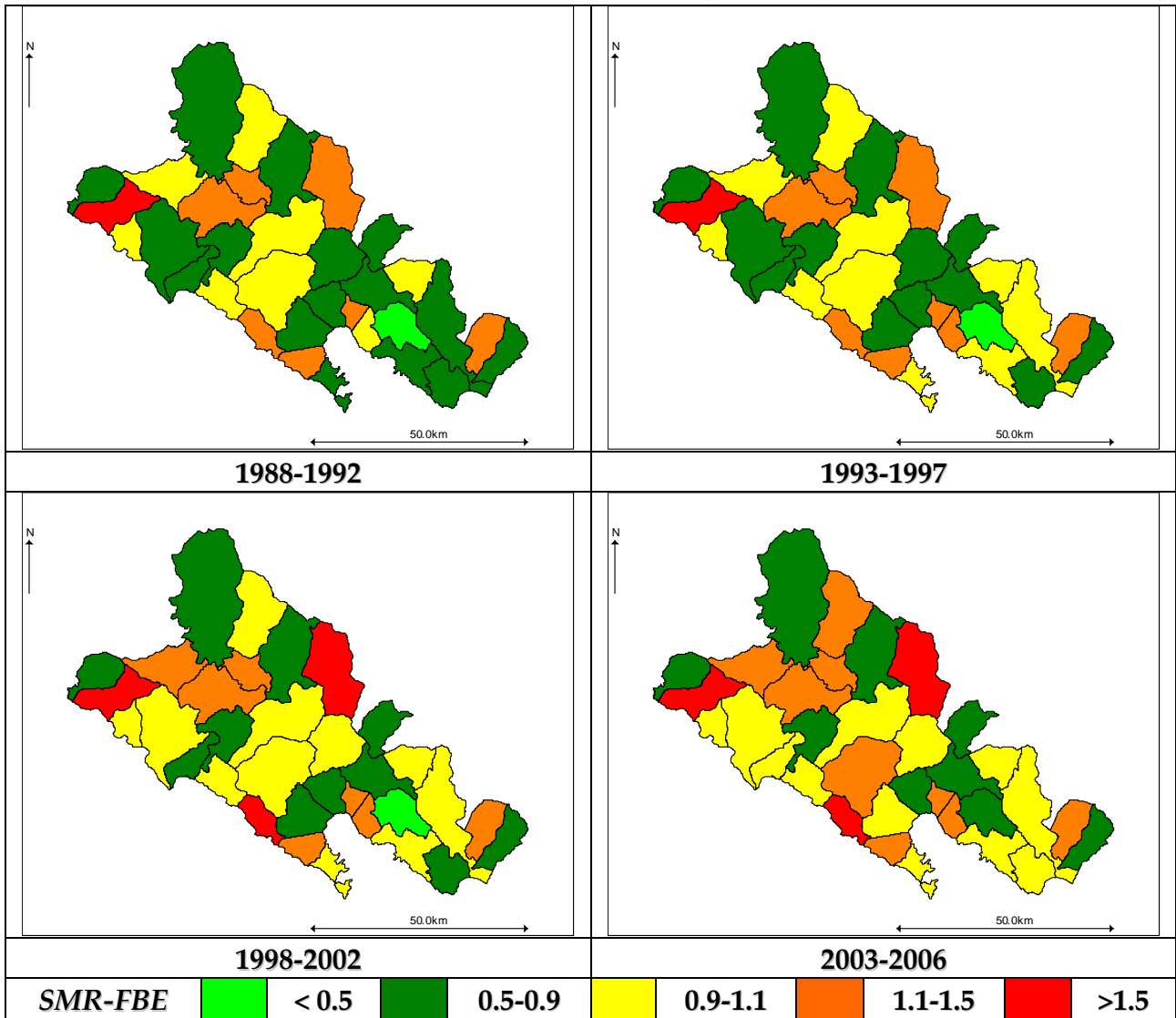
**FIGURA 5 – T. STOMACO (ICD: 151) MASCHI**



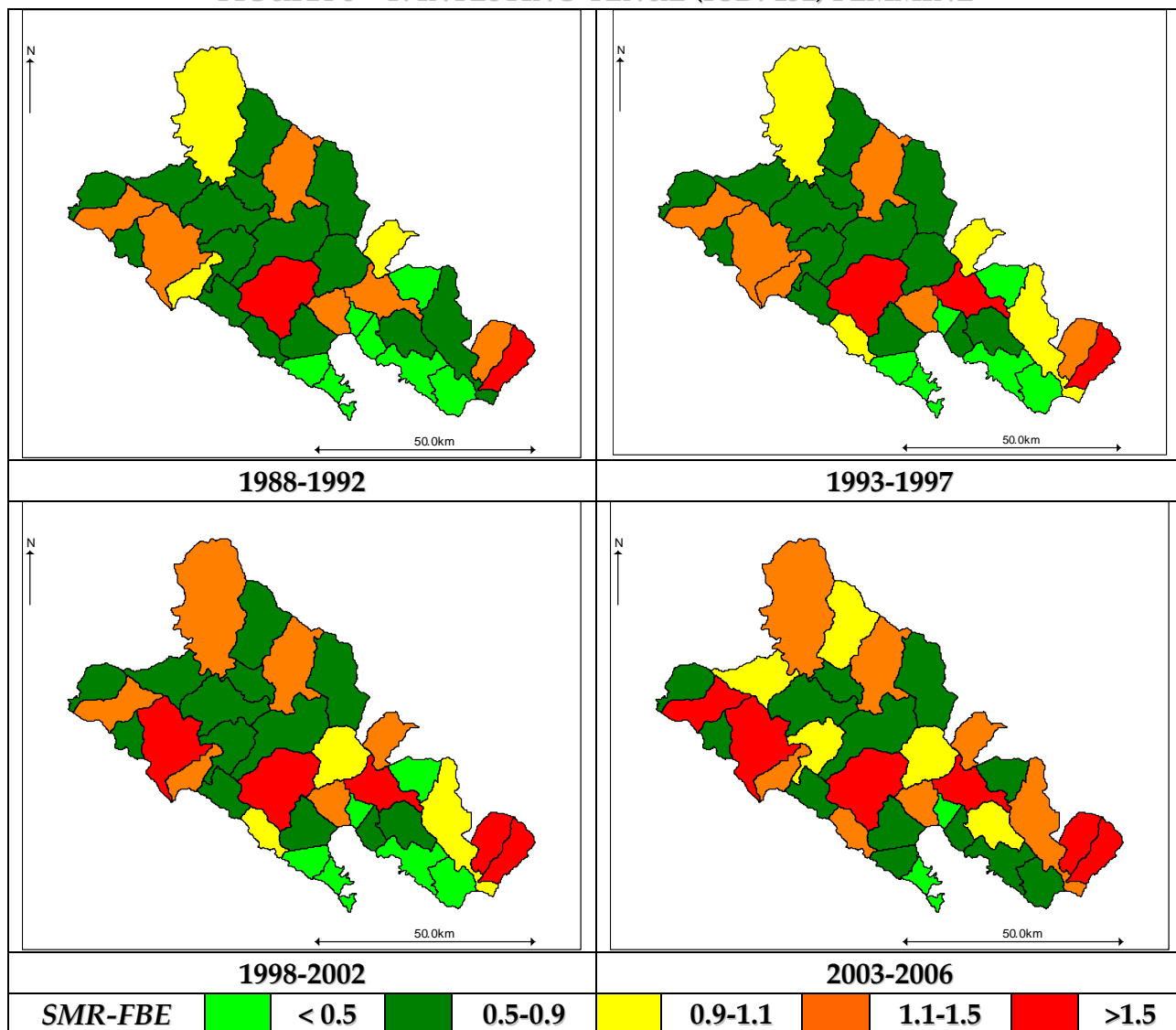
**FIGURA 6 – T. STOMACO (ICD: 151) FEMMINE**



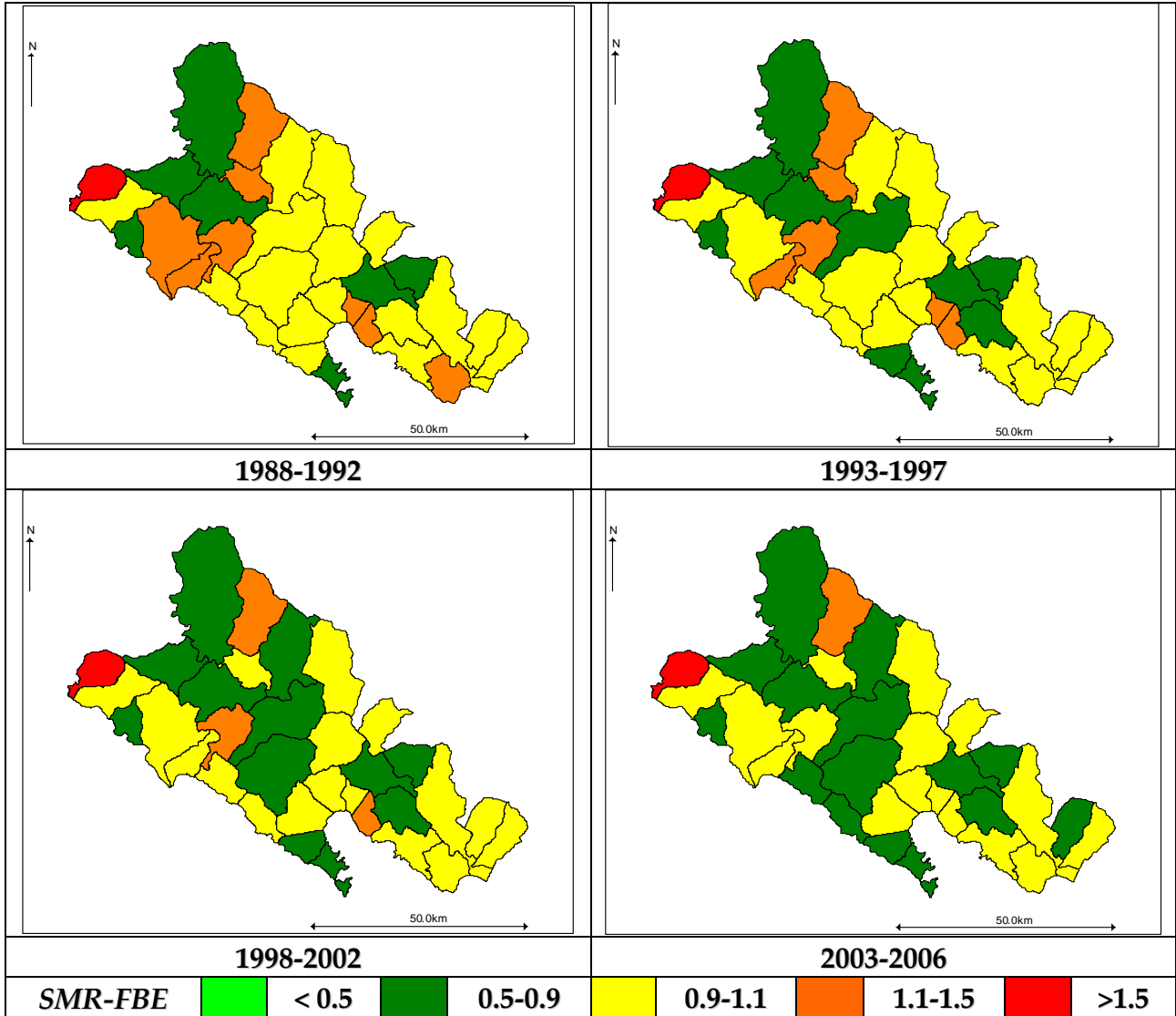
**FIGURA 7 – T. INTESTINO TENUE (ICD: 152) MASCHI**



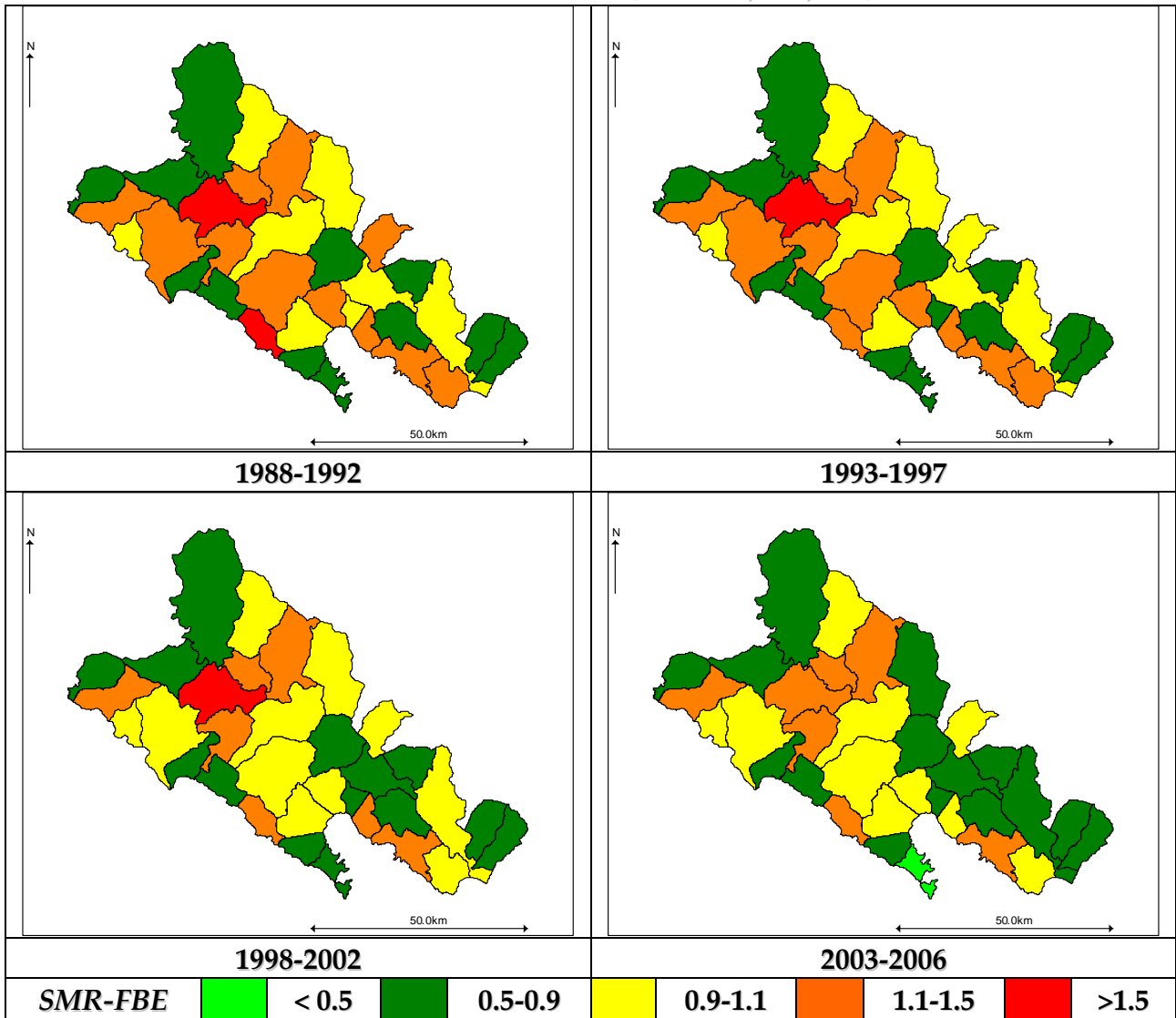
**FIGURA 8 – T. INTESTINO TENUE (ICD: 152) FEMMINE**



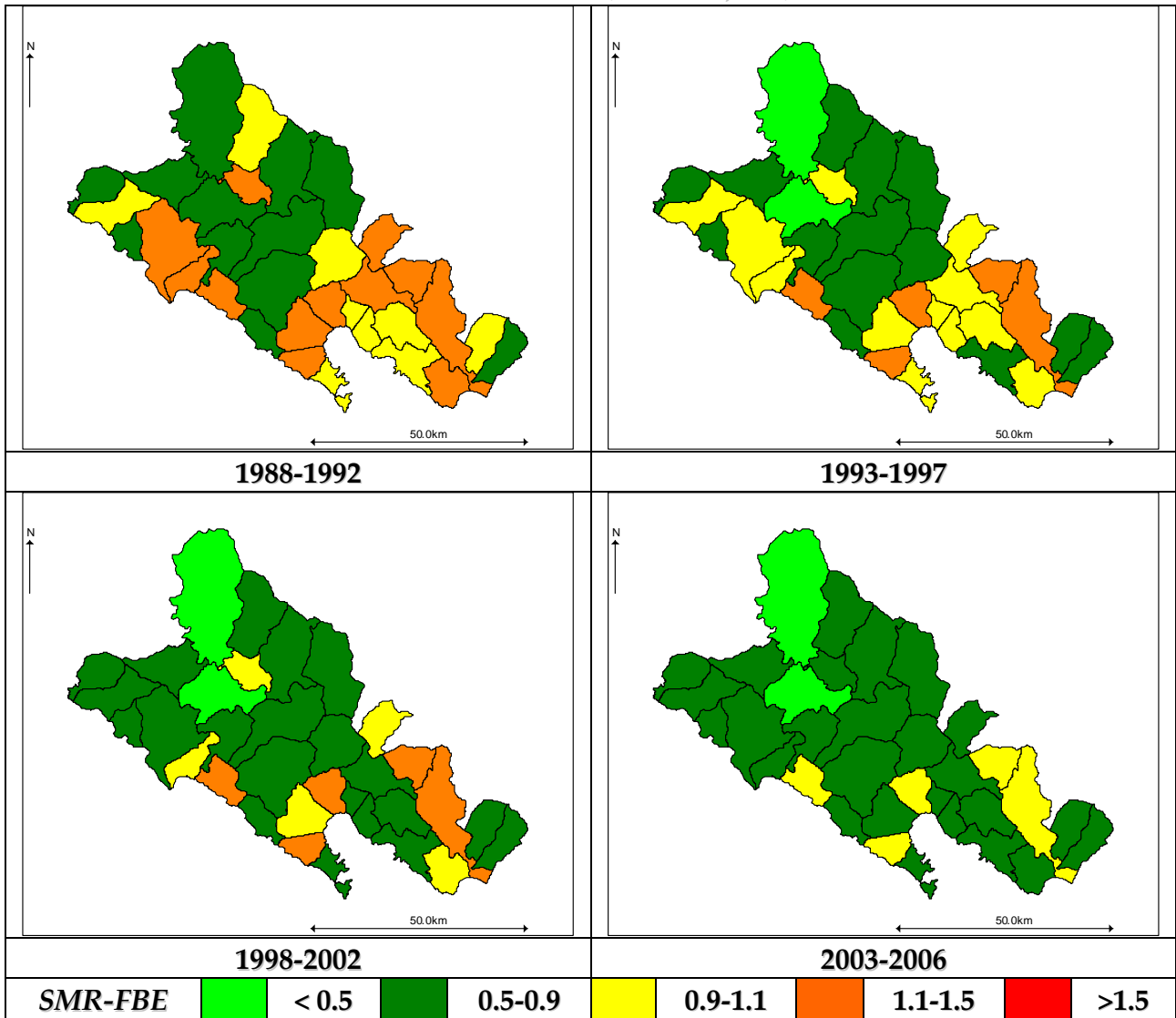
**FIGURA 9 – T. COLON & RETTO (ICD: 153, 154, 159) MASCHI**



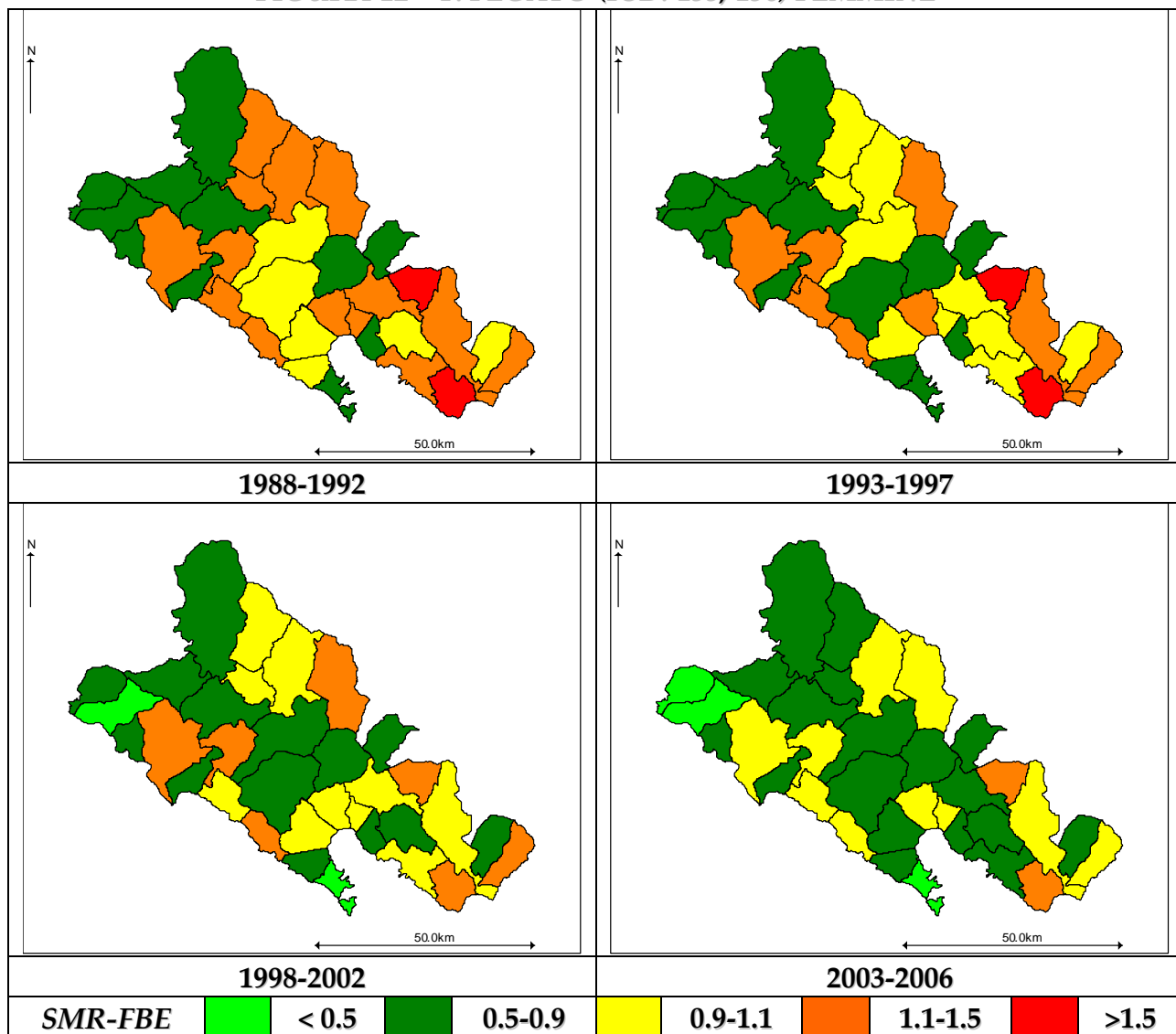
**FIGURA 10 – T. COLON & RETTO (ICD: 153, 154, 159) FEMMINE**



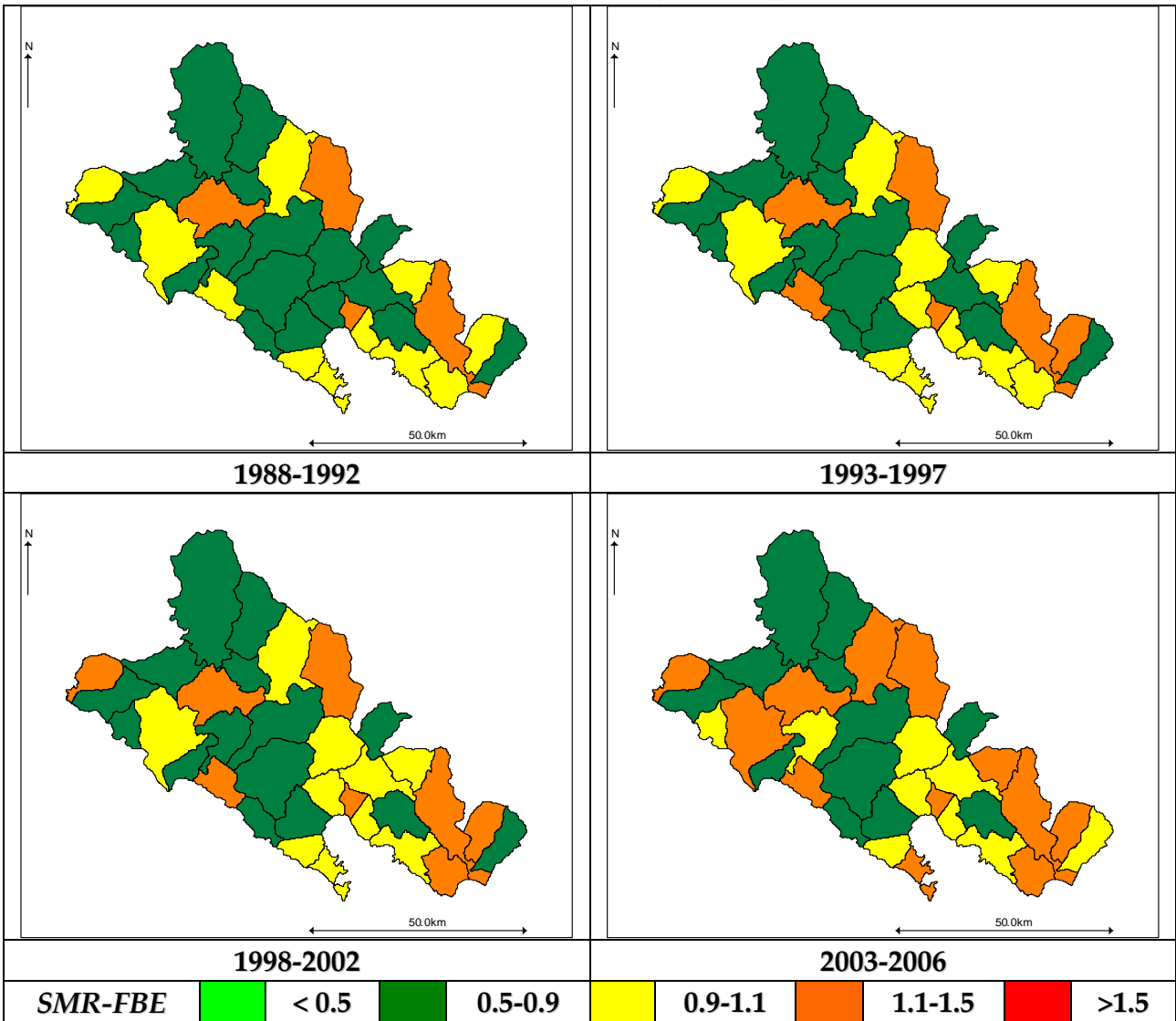
**FIGURA 11 – T. FEGATO (ICD: 155, 156) MASCHI**



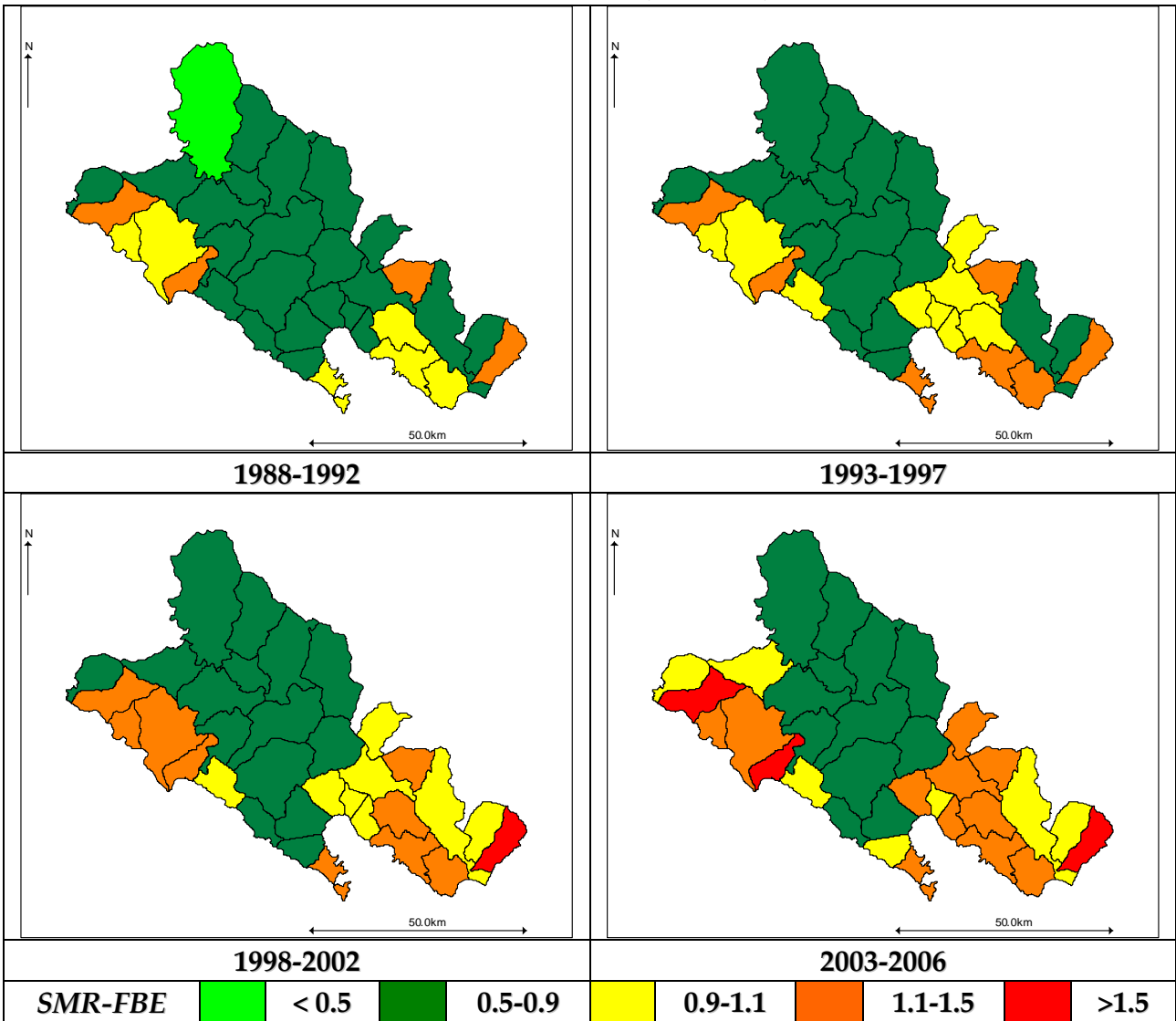
**FIGURA 12 – T. FEGATO (ICD: 155, 156) FEMMINE**



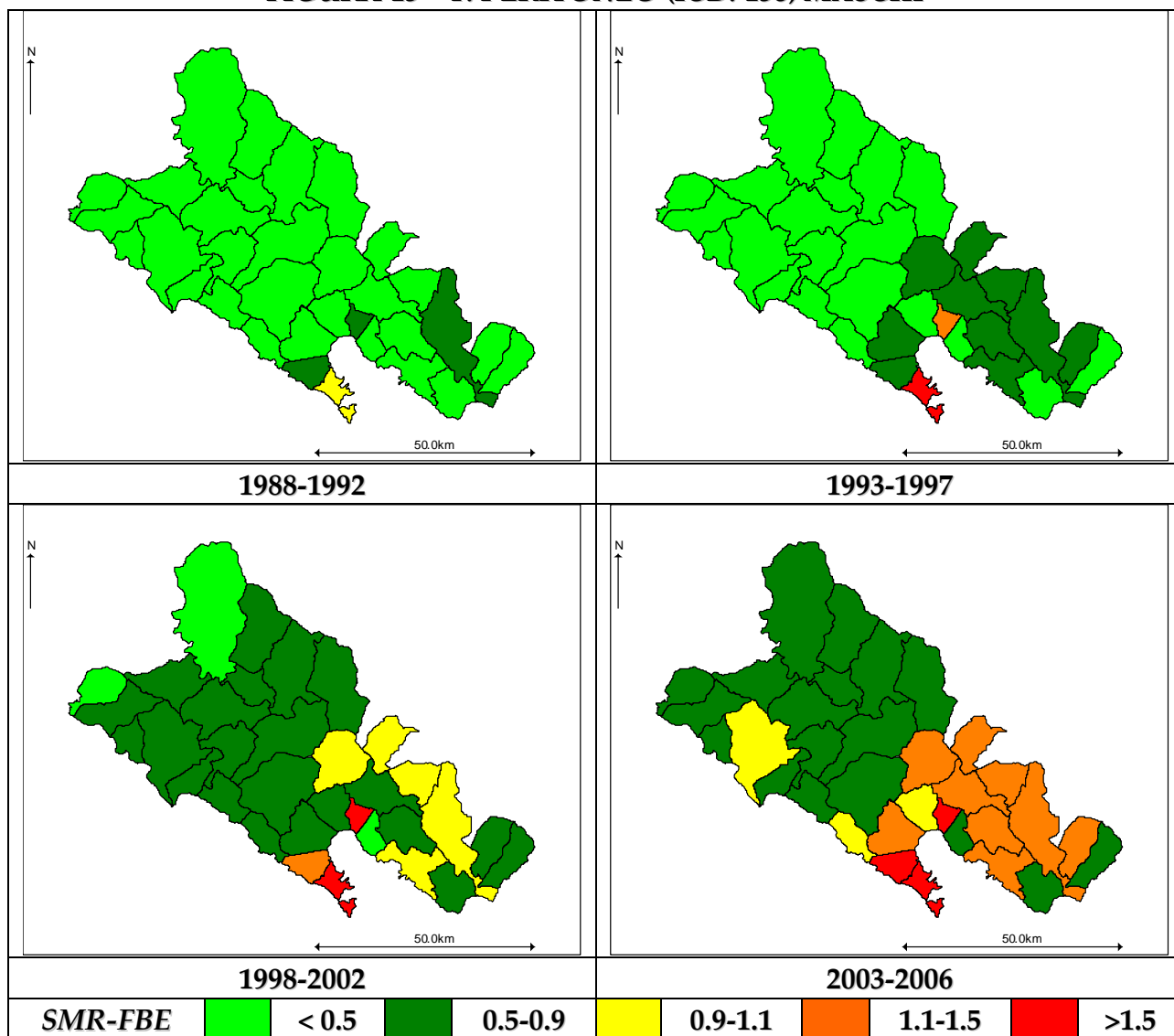
**FIGURA 13 – T. PANCREAS (ICD: 157) MASCHI**



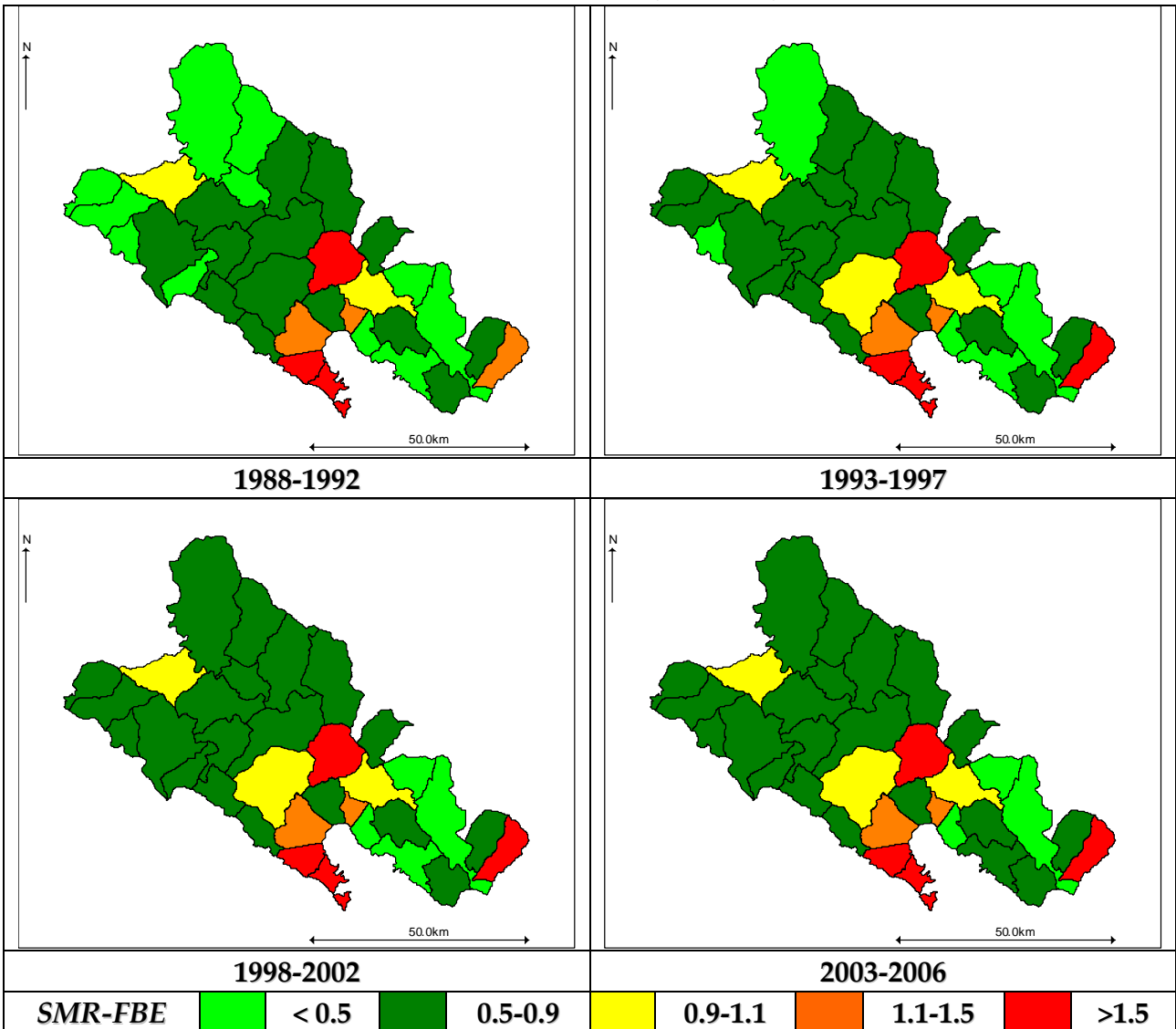
**FIGURA 14 – T. PANCREAS (ICD: 157) FEMMINE**



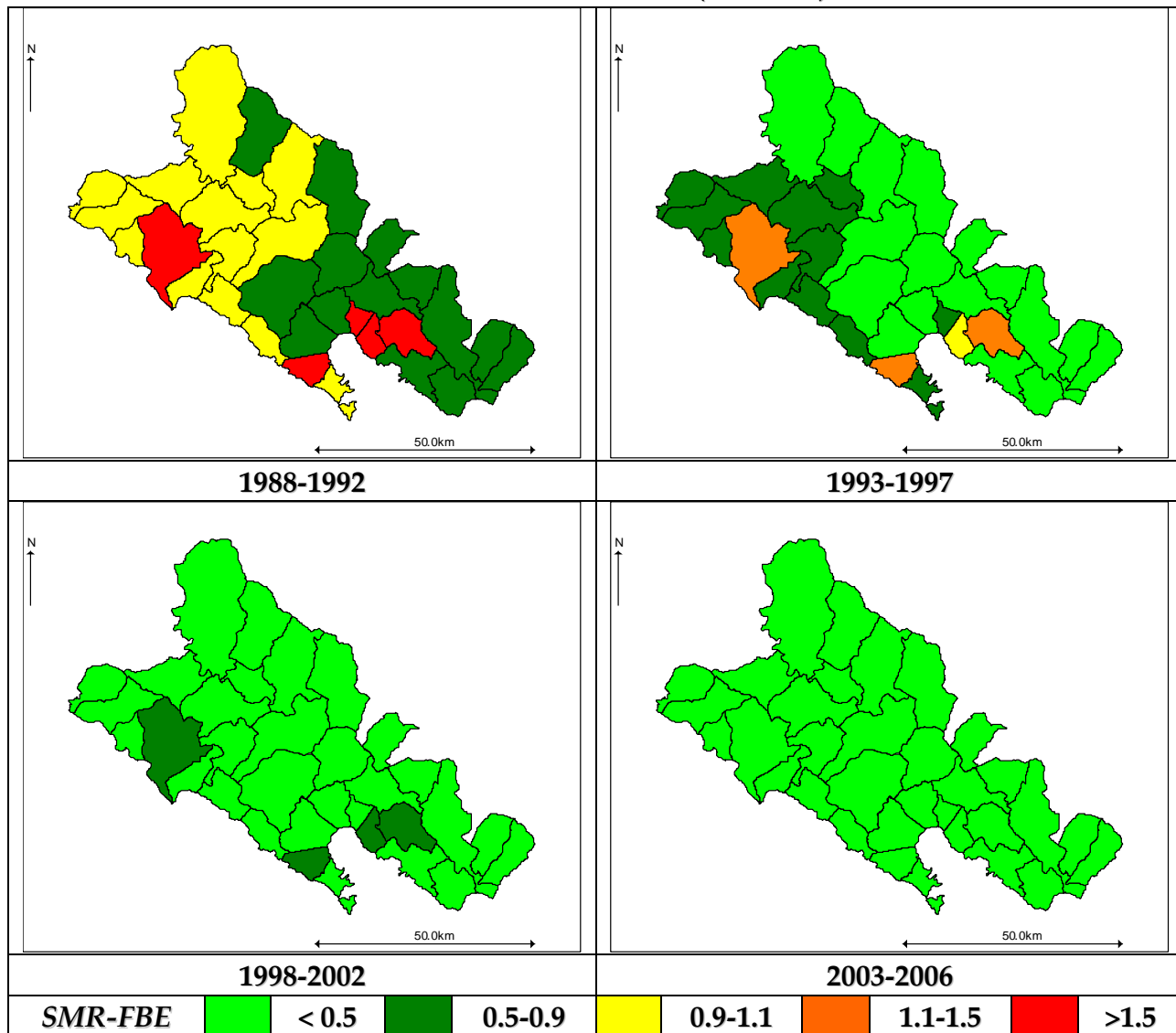
**FIGURA 15 – T. PERITONEO (ICD: 158) MASCHI**



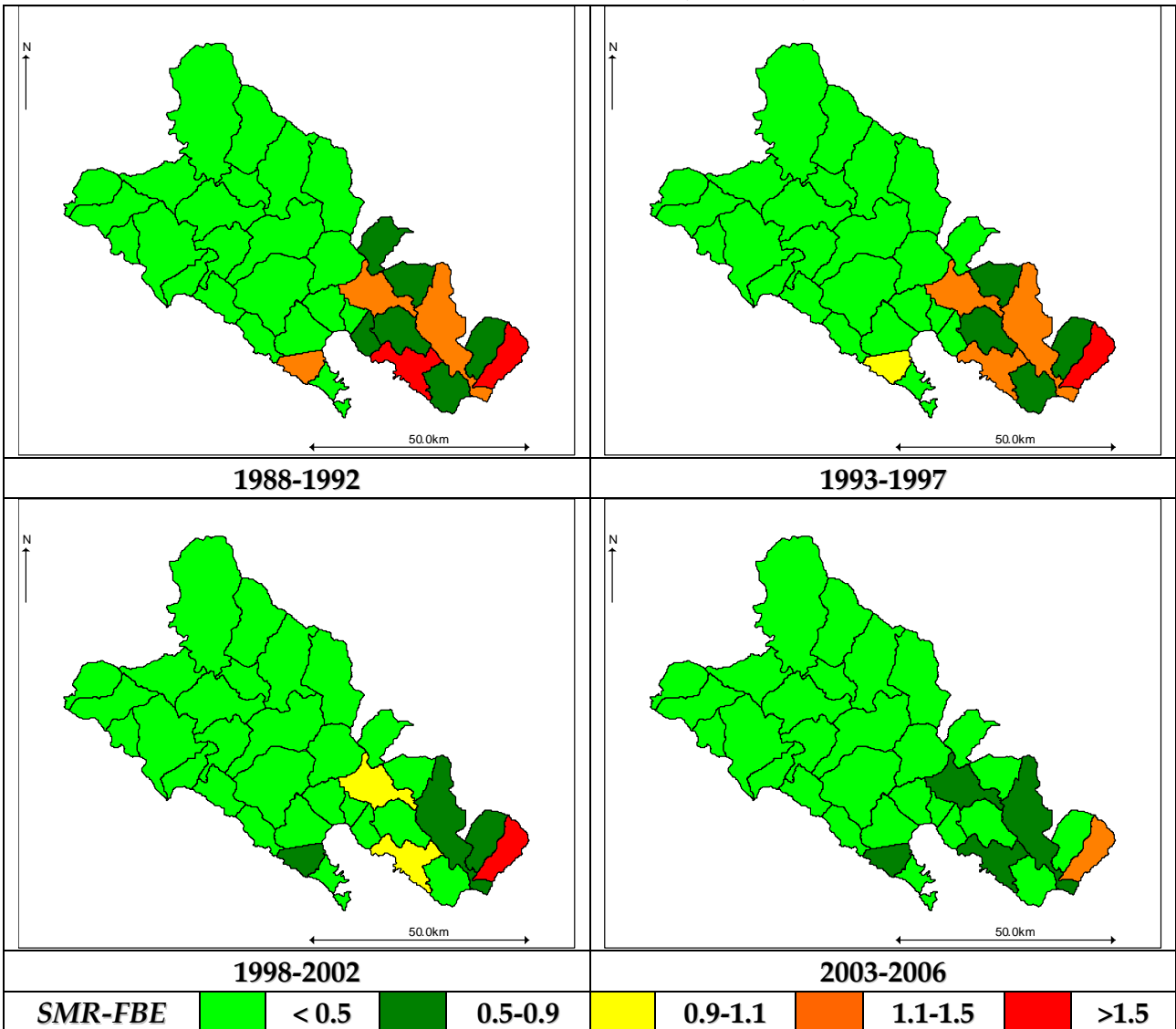
**FIGURA 16 – T. PERITONEO (ICD: 158) FEMMINE**



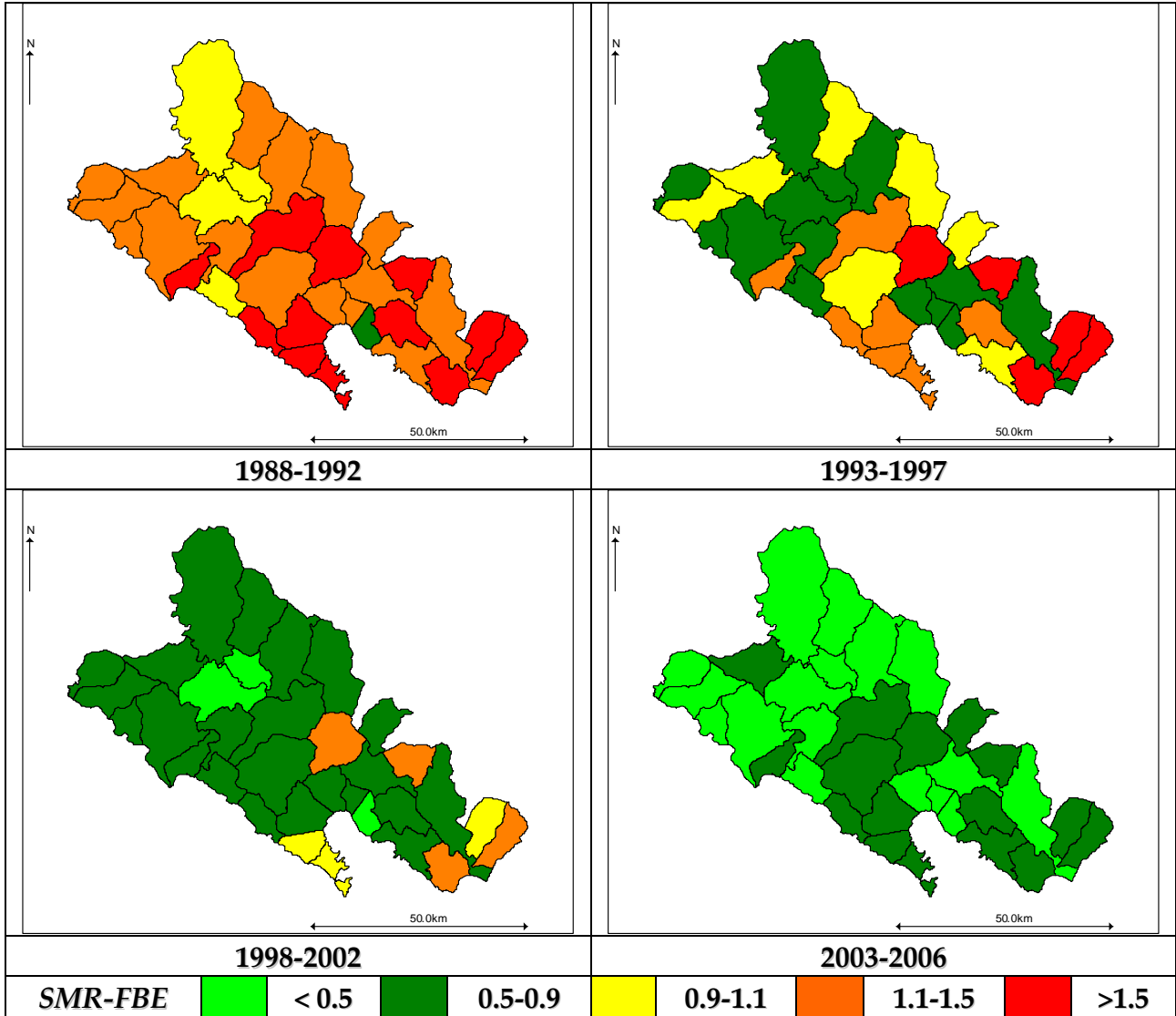
**FIGURA 17 – T. CAVITA' NASALI (ICD: 160) MASCHI**



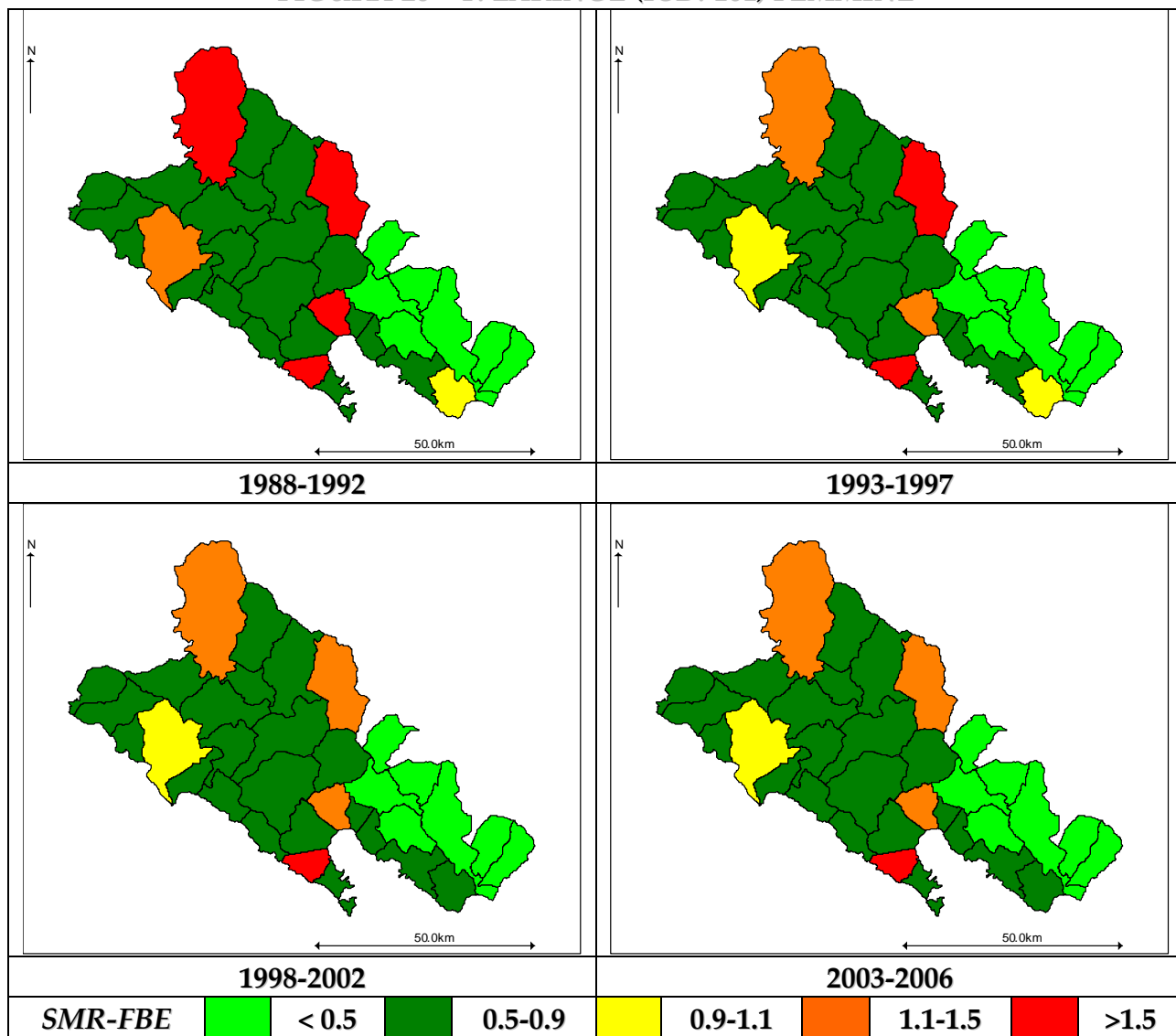
**FIGURA 18 – T. CAVITA' NASALI (ICD: 160) FEMMINE**



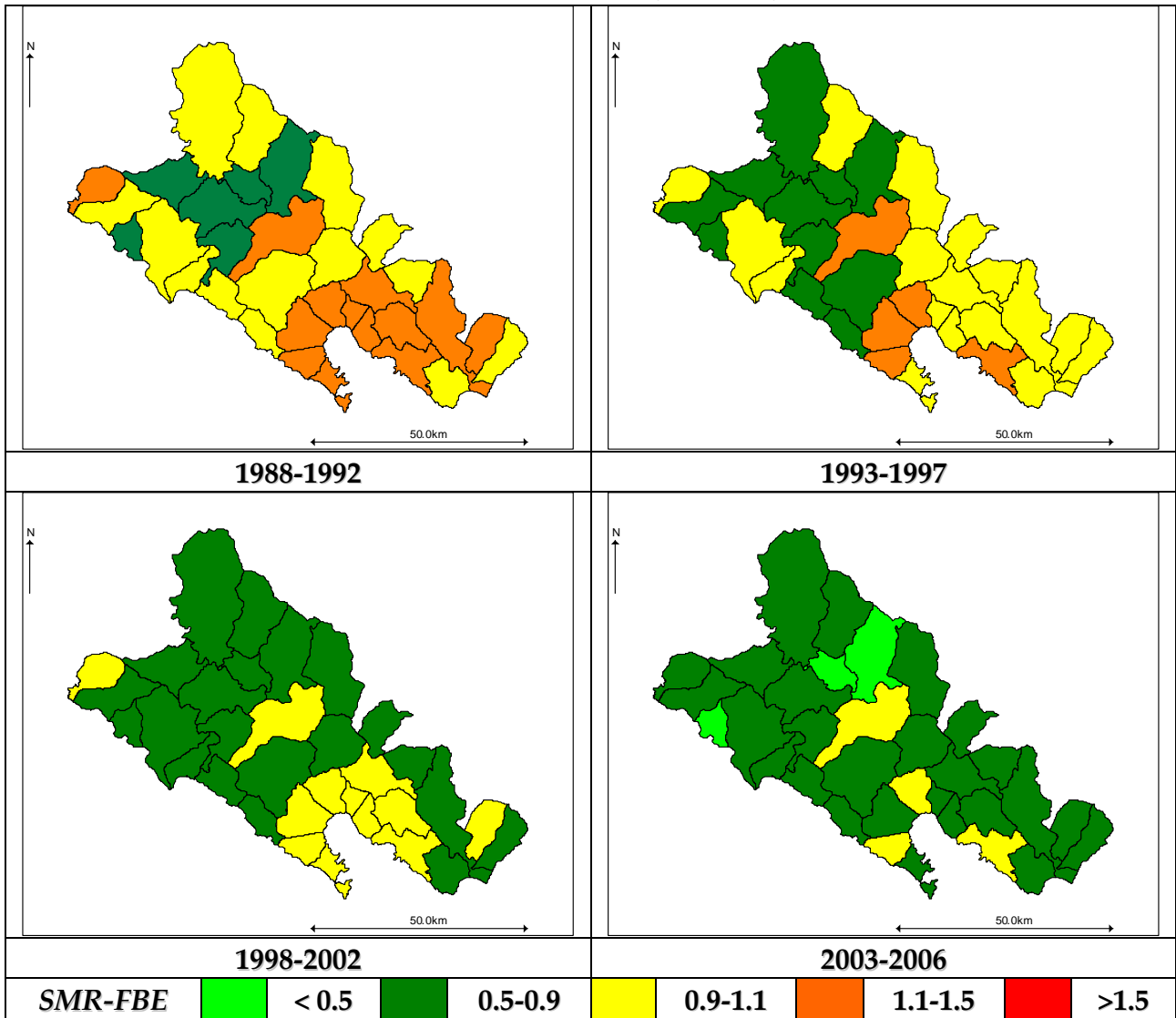
**FIGURA 19 – T. LARINGE (ICD: 161) MASCHI**



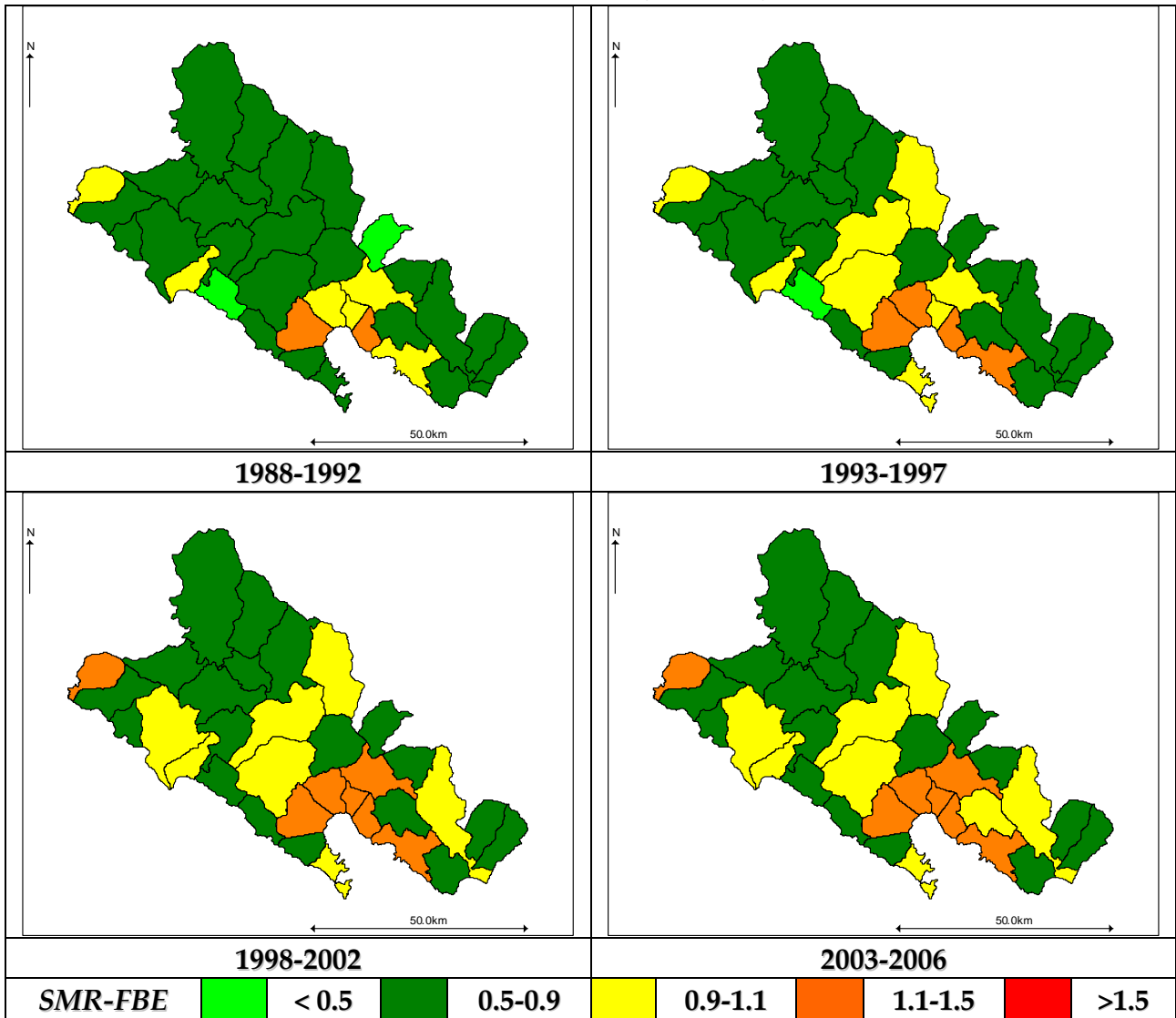
**FIGURA 20 – T. LARINGE (ICD: 161) FEMMINE**



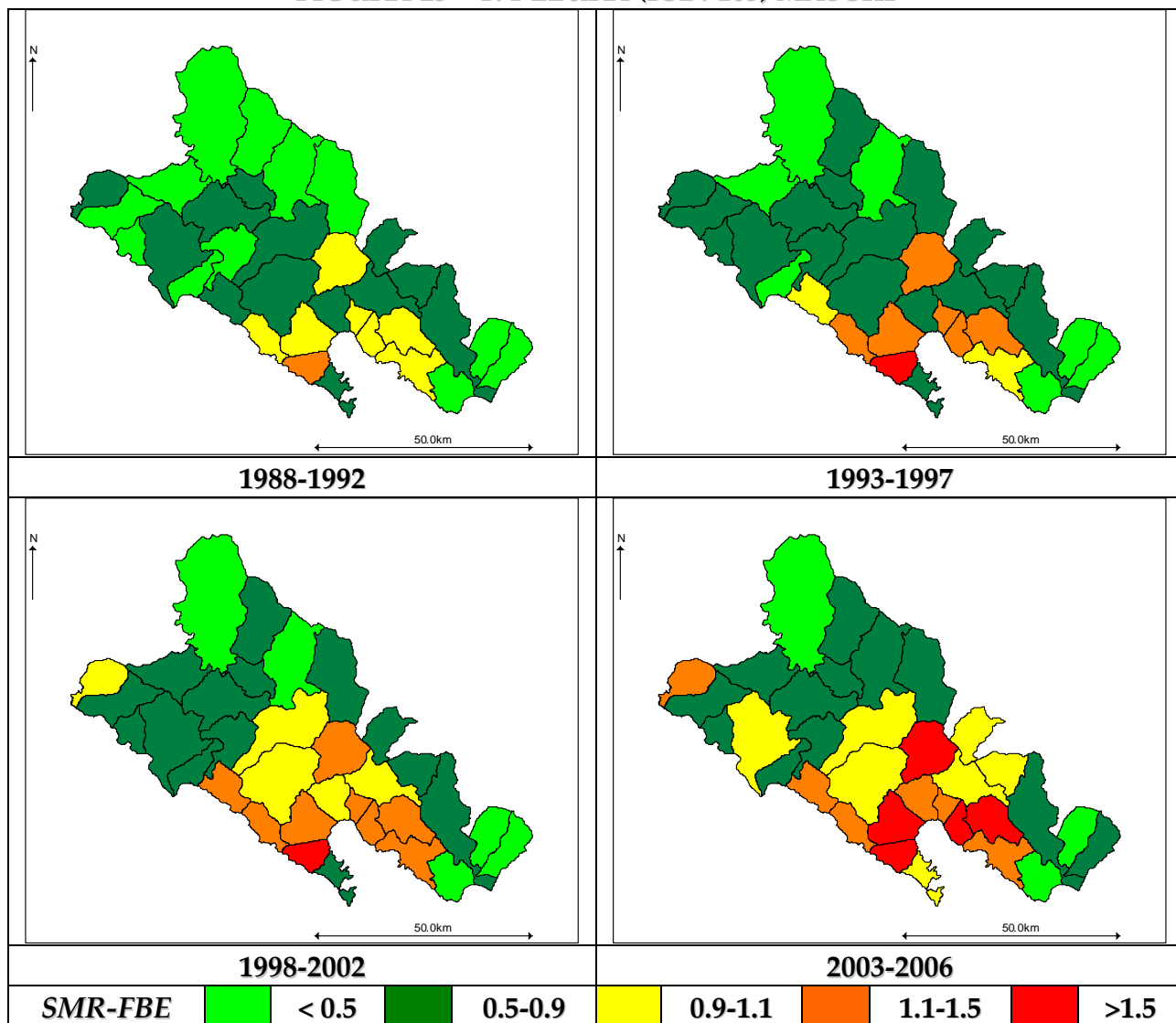
**FIGURA 21 – T. POLMONE (ICD: 162) MASCHI**



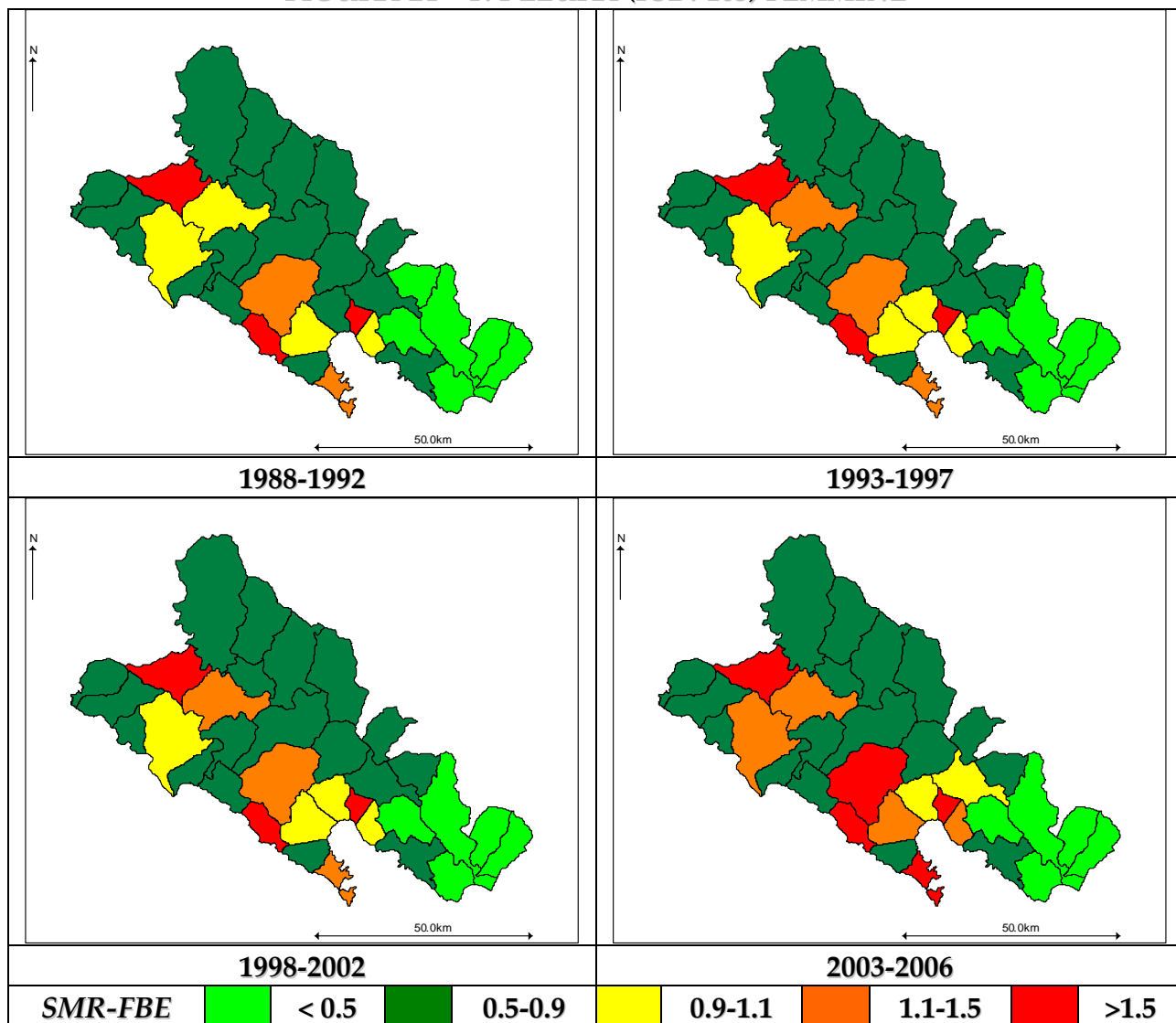
**FIGURA 22 – T. POLMONE (ICD: 162) FEMMINE**



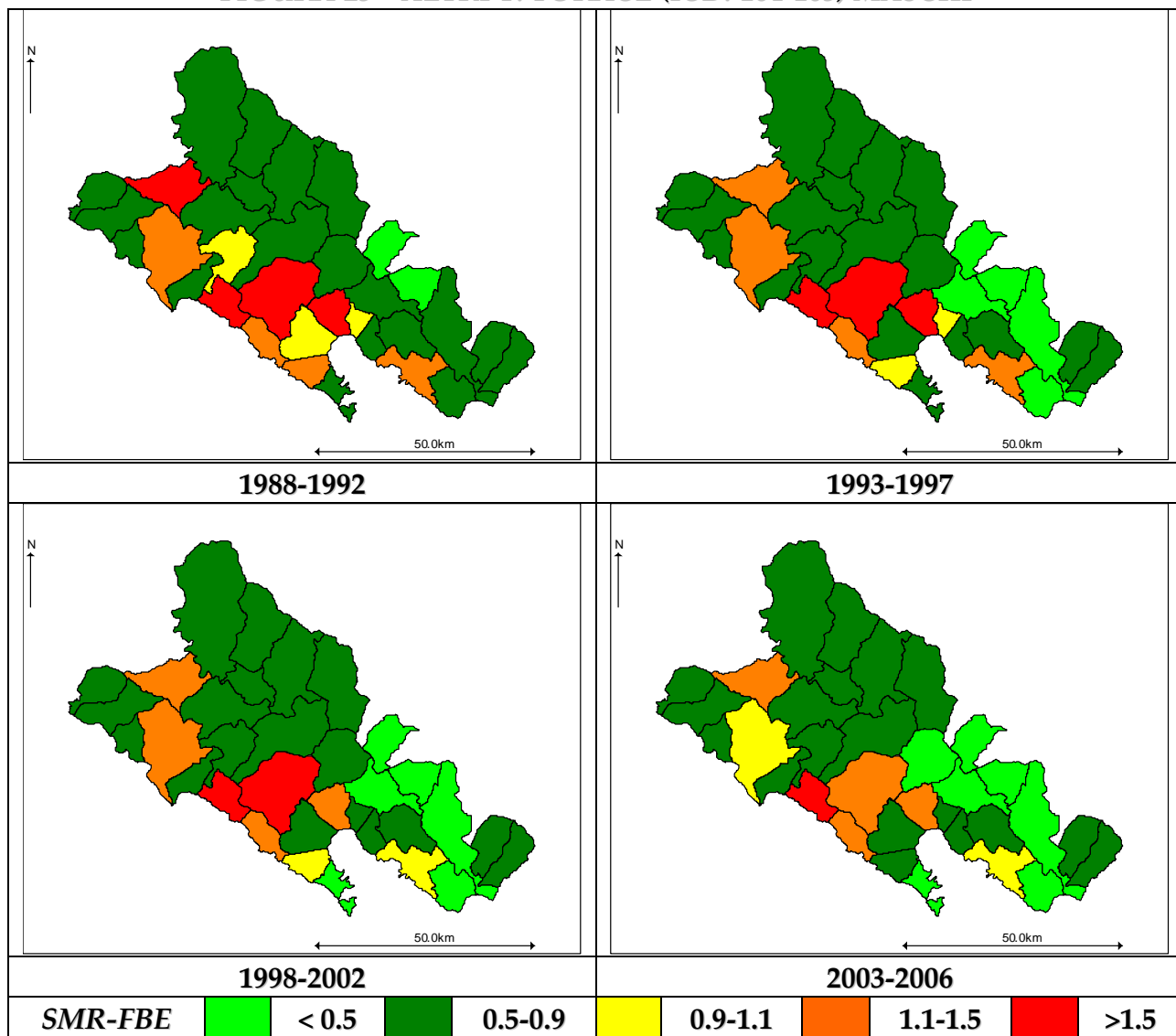
**FIGURA 23 – T. PLEURA (ICD: 163) MASCHI**



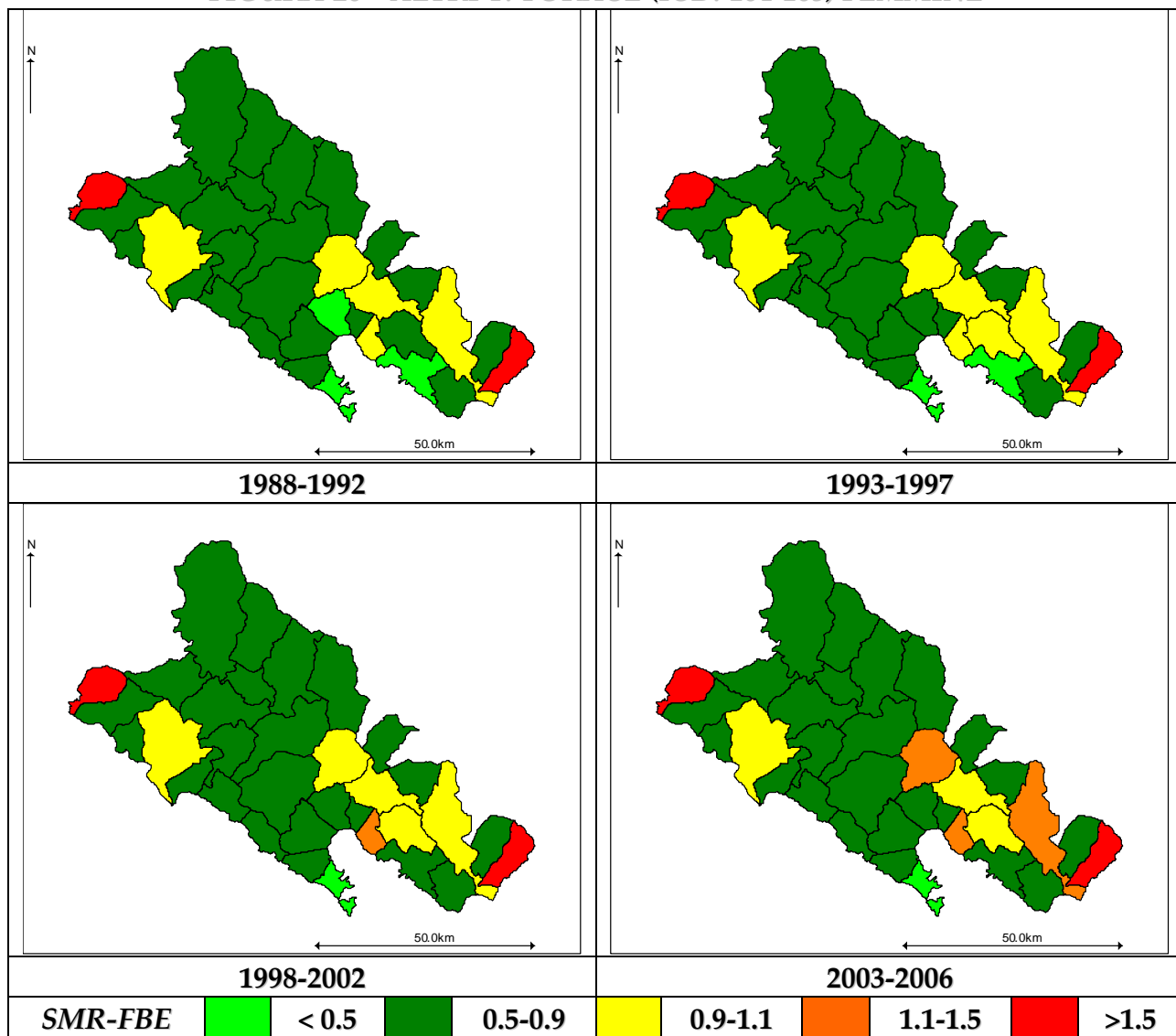
**FIGURA 24 – T. PLEURA (ICD: 163) FEMMINE**



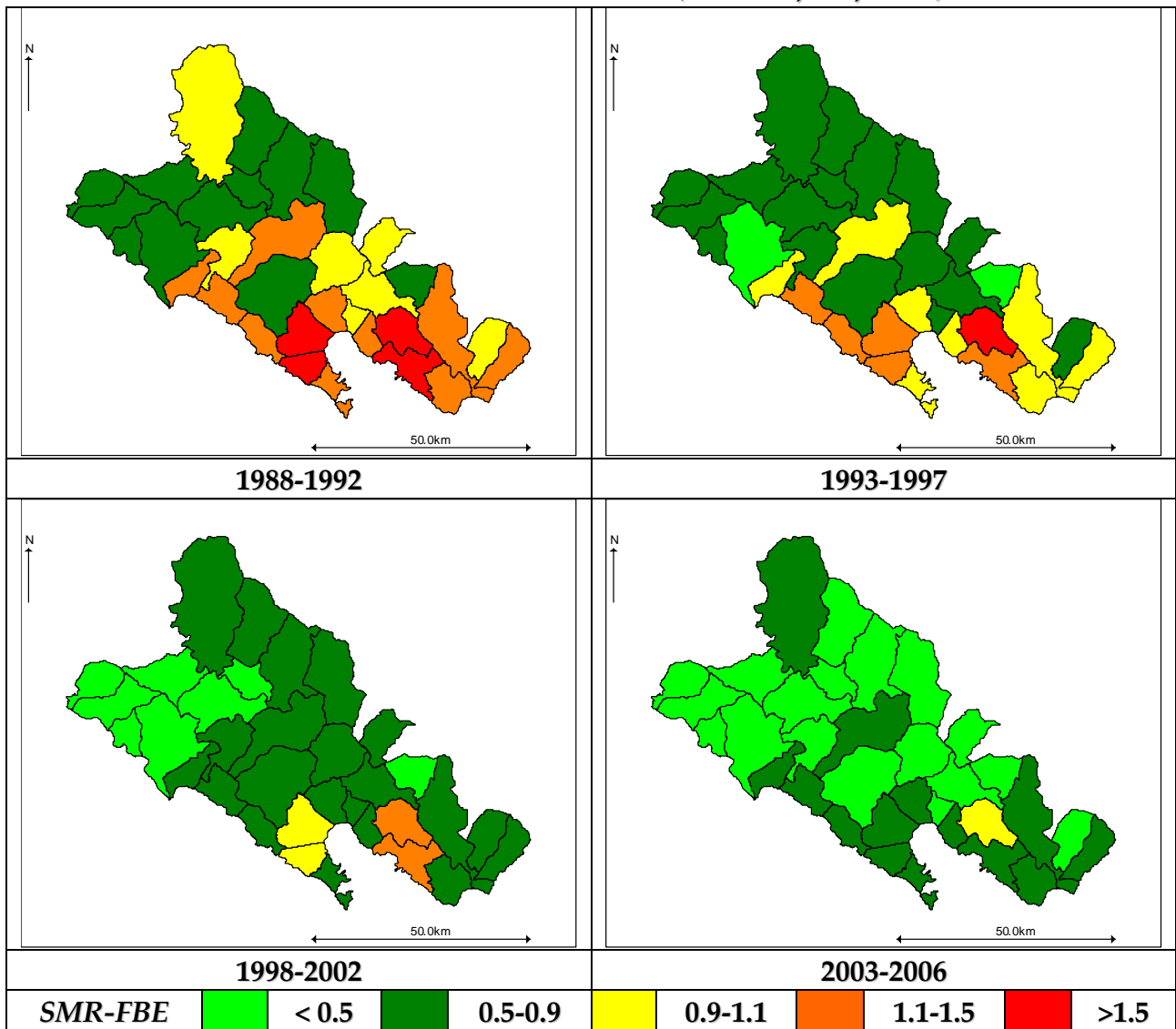
**FIGURA 25 – ALTRI T. TORACE (ICD: 164-165) MASCHI**



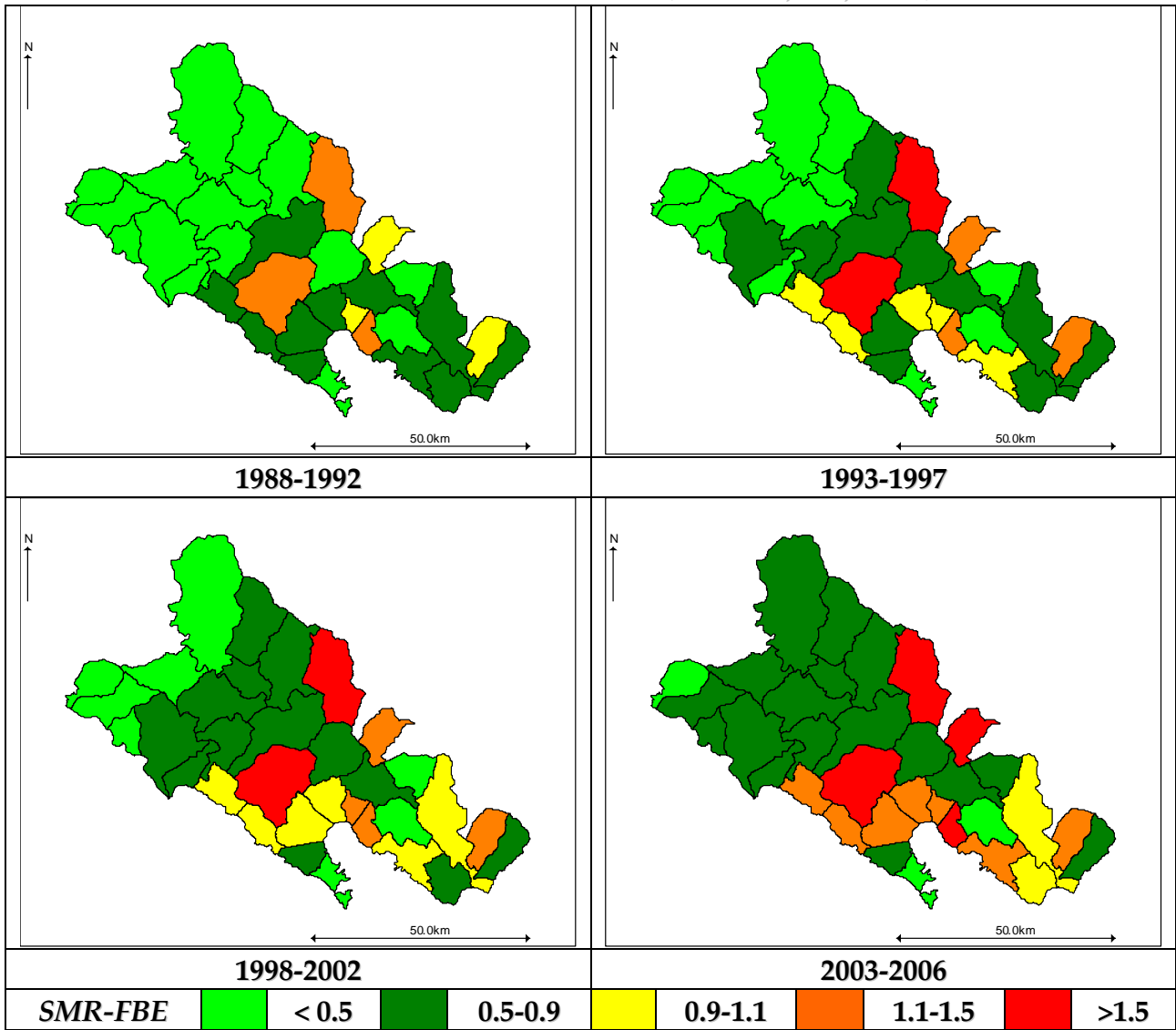
**FIGURA 26 – ALTRI T. TORACE (ICD: 164-165) FEMMINE**



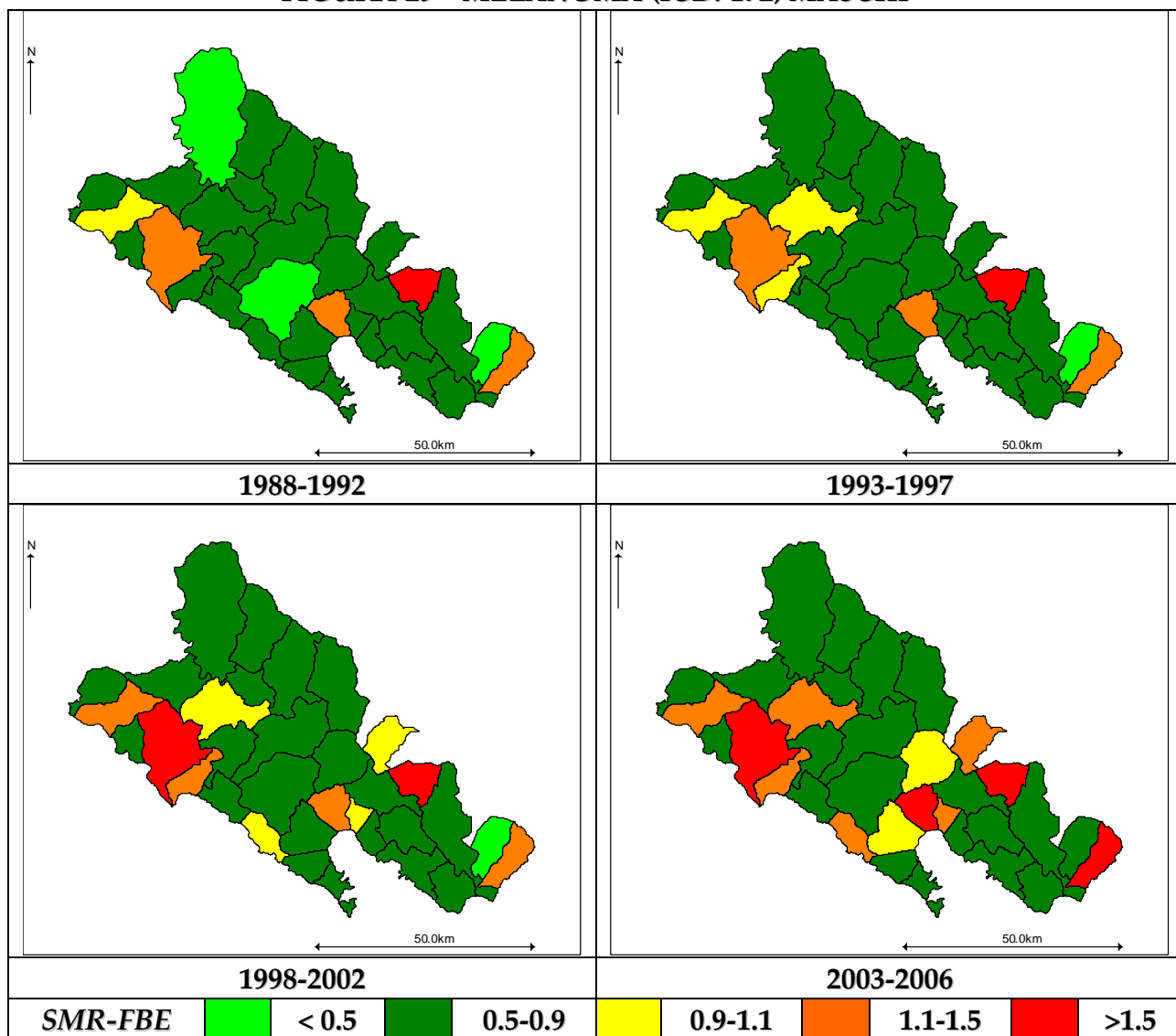
**FIGURA 27 – T. OSSA & TESSUTI MOLLI (ICD: 170, 171, 239.9) MASCHI**



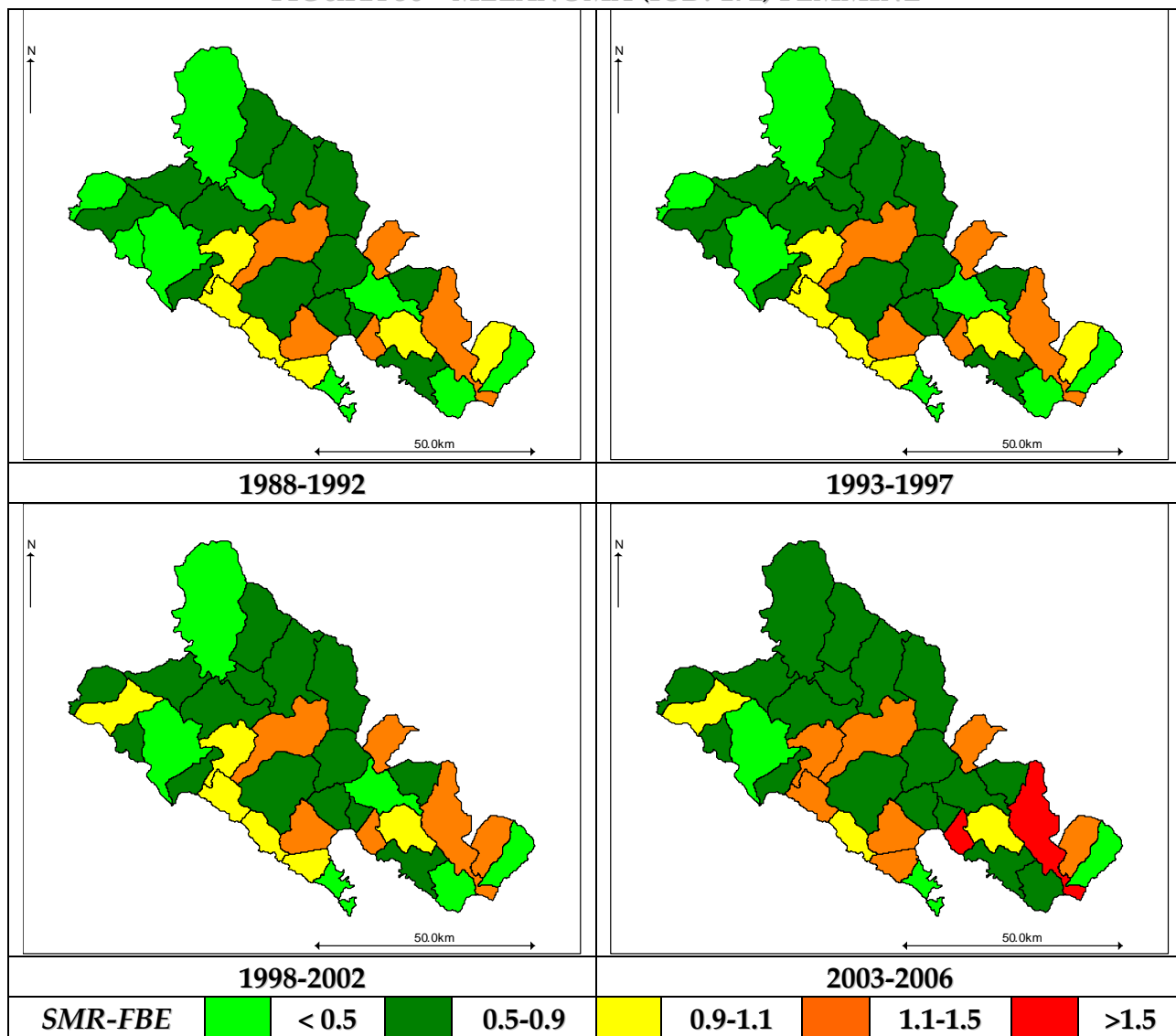
**FIGURA 28 – T. OSSA & TESSUTI MOLLI (ICD: 170, 171, 239.9) FEMMINE**



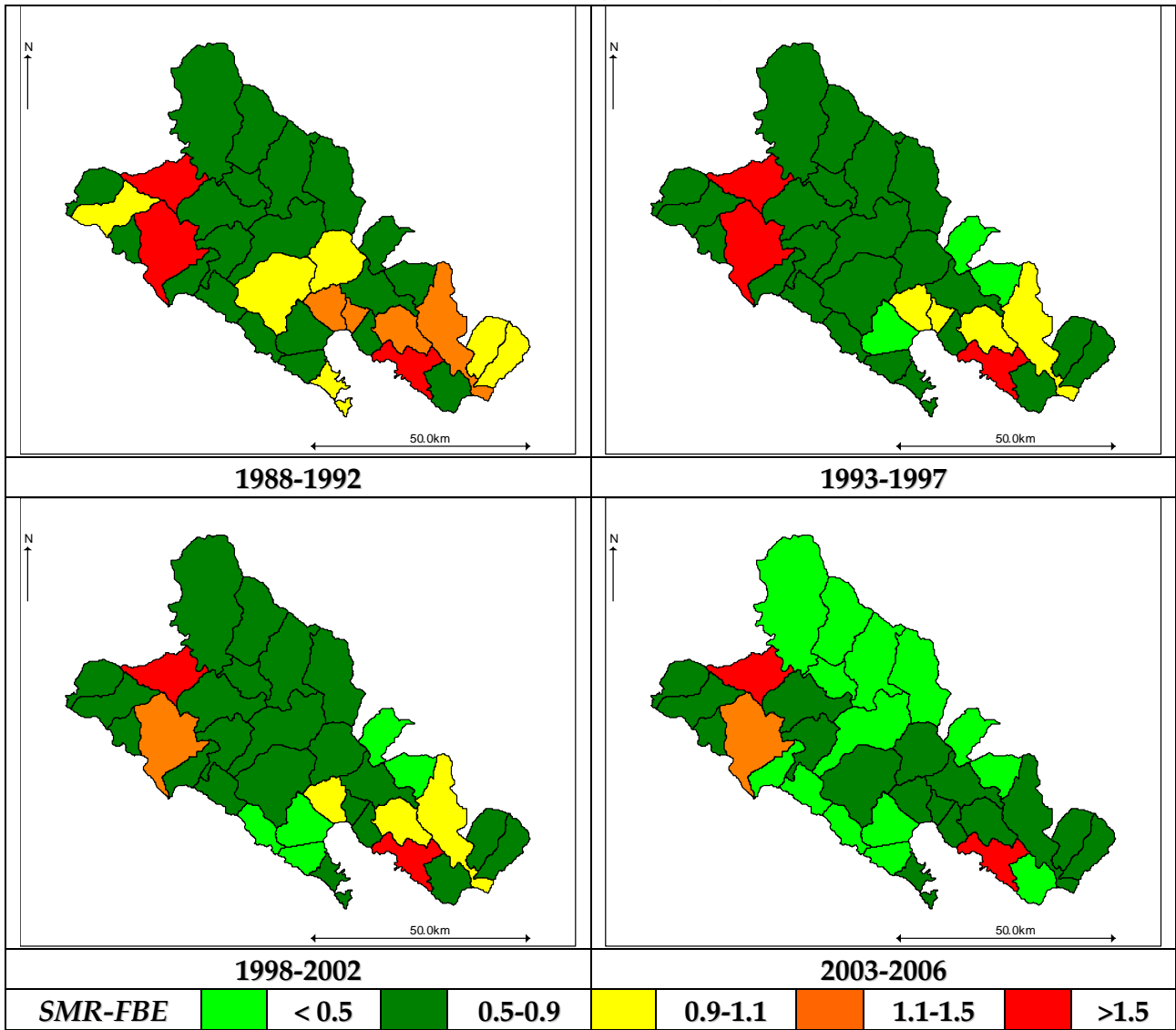
**FIGURA 29 – MELANOMA (ICD: 172) MASCHI**



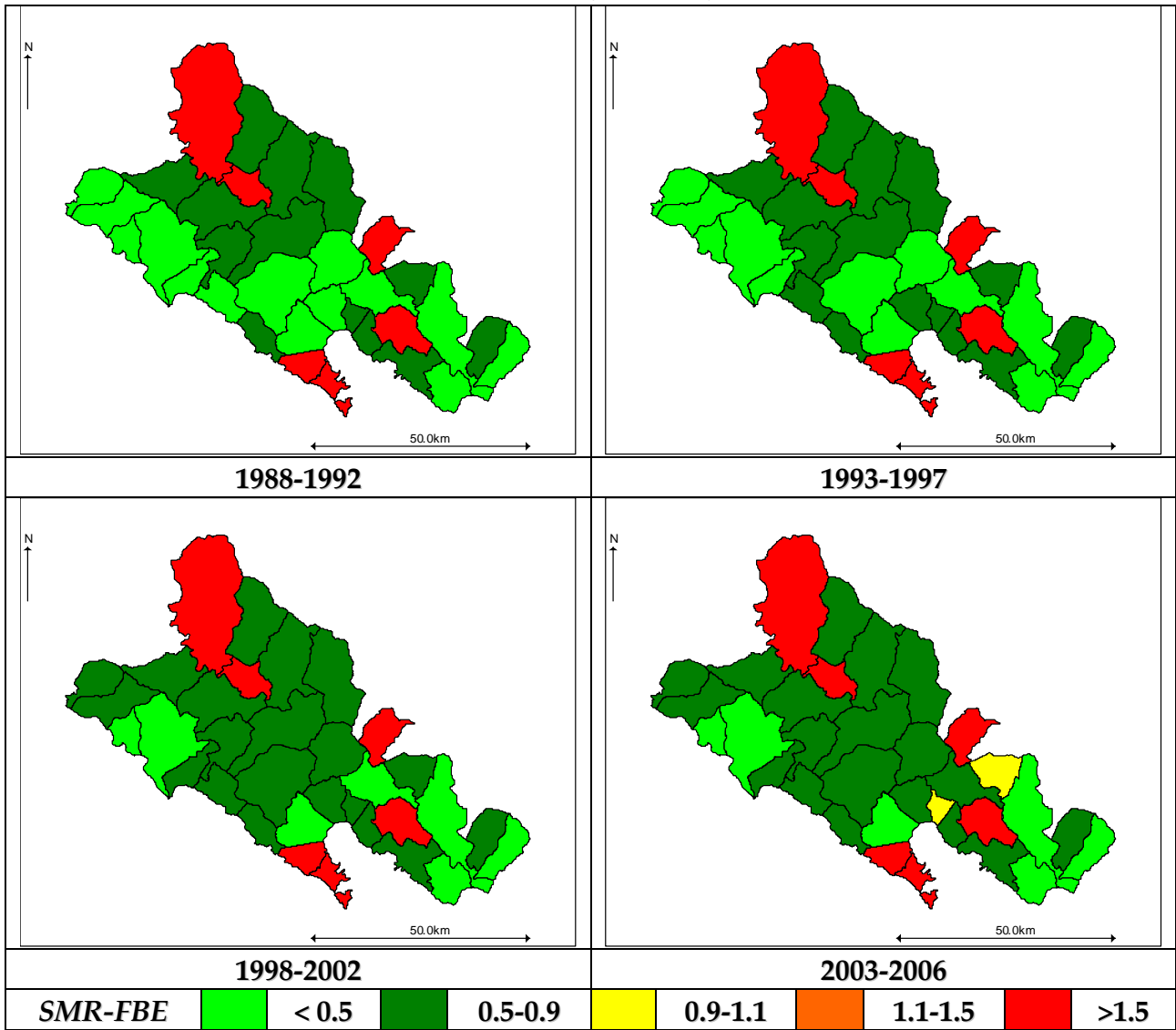
**FIGURA 30 – MELANOMA (ICD: 172) FEMMINE**



**FIGURA 31 – CUTE (ICD: 173) MASCHI**



**FIGURA 32 – CUTE (ICD: 173) FEMMINE**



**FIGURA 33 – T. MAMMELLA (ICD: 175) MASCHI**

